



VAGMINE TECHNOLOGIES

(An ISO 9001:2015 Certified Company)



SCIENCE CATALOG

Make Your Education Easy

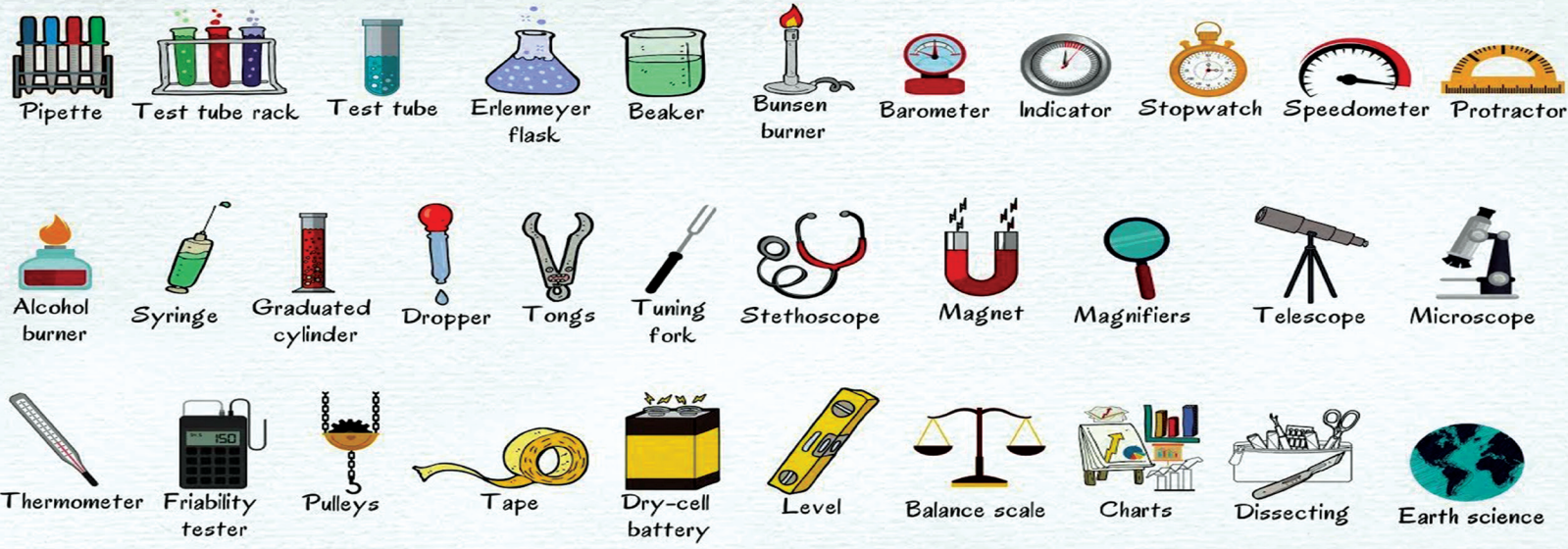
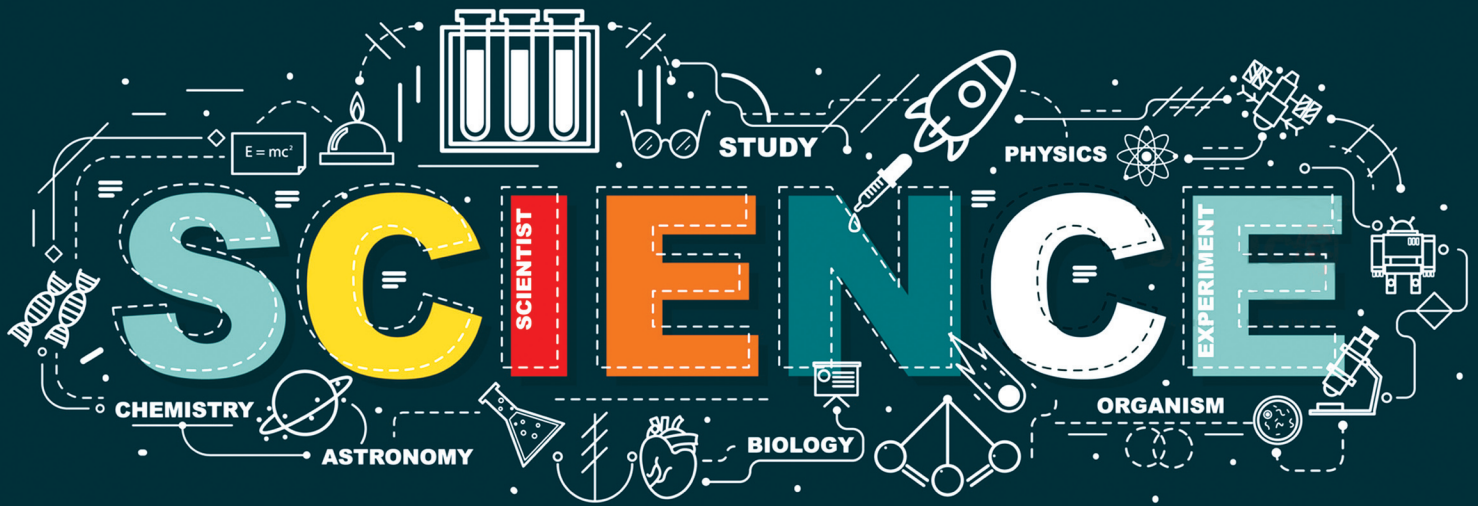
PHYSICS



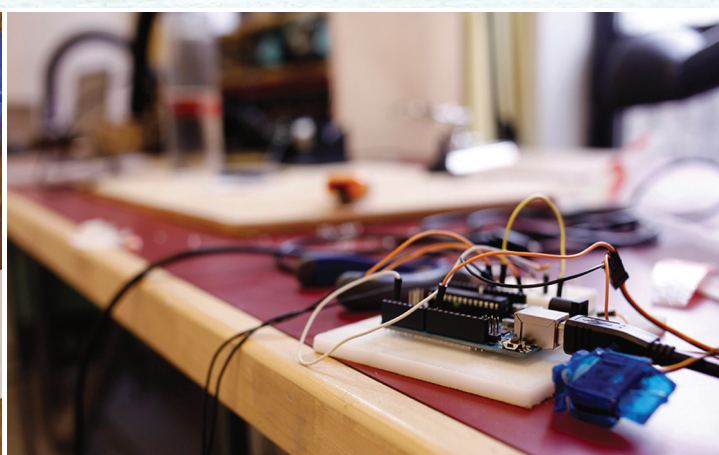
BIOLOGY



SCIENCE LAB



Homemade Inventor's Box



SCIENCE AND TECHNOLOGY CHARTS

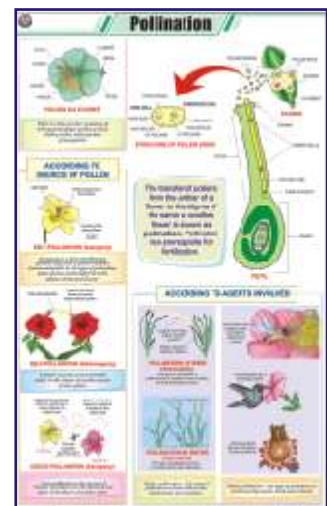
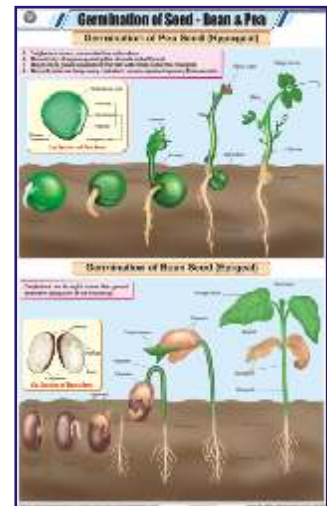
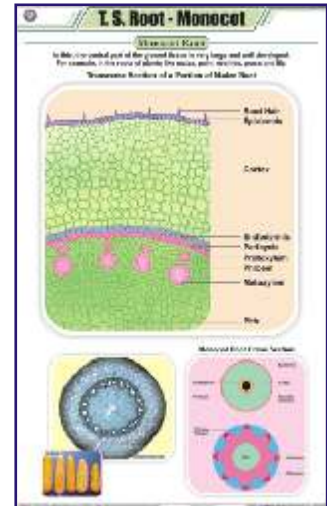
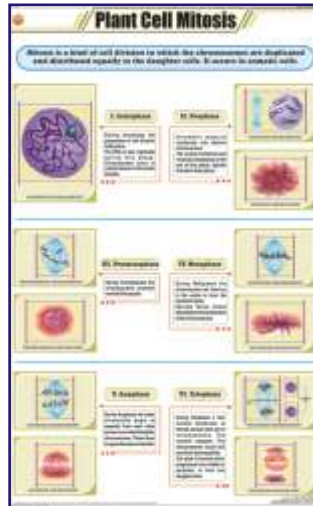
Size 58 × 90 cm (In English only)

The charts aim at familiarising students with the subject in a very realistic way and in social context. These delineate the process of life and of the technology that conditions our world today. The students will come to know the intricacies of the phenomenon and how it can be best used for the benefit of mankind. Using the latest printing technology the charts are printed on art paper in full colours and are duly laminated on both sides with thick plastic film and are fitted with plastic rollers.

BOTANY

- STB01 **Plant Kingdom** : Classification of plants, Cryptogamae, Phanerogamae.
- STB02 **Typical Plant** : Non-flowering plants, Flowering plants.
- STB03 **Typical Plant Cell** : Structure.
- STB04 **Plant Cell Organelles** : Nucleus, Cell Wall, Cell membrane, Endoplasmic reticulum, Mitochondria, Golgi bodies, Plastids, Chloroplast.
- STB05 **Plant Tissues** : Meristematic, Permanent.
- STB06 **Plant Cell Mitosis** : Cell division in plant somatic cells.
- STB07 **Plant Cell Meiosis** : Reductional cell division in plants.
- STB08 **T.S. Stem - Monocot** : Maize stem.
- STB09 **T.S. Dicot Stem (Sunflower)** : T.S. stem of Helianthus annuus.
- STB10 **T.S. Root - Monocot** : Maize root.
- STB11 **T.S. of Dicot Root** : Gram root.
- STB12 **T.S. Leaf - Monocot** : Maize, Boutelova (C₄ grass), Poa annua (C₃ grass).
- STB13 **T.S. Leaf - Dicot** : Mango, Waterlily, Nerium oleander.
- STB14 **Types of Leaves** : Simple, Compound, Heterophyll, Phyllotaxy, Venation.
- STB15 **Root Systems** : Tap, Fibrous, Adventitious.
- STB16 **Structure of Flower** : Parts, Symmetry & floral diagram Actinomorphic, Zygomorphic, Assymetrical, Position of floral organs.
- STB17 **Calyx and Corolla** : Calyx modifications, Shapes of corolla.
- STB18 **Inflorescences** : Racemose, Cymose.
- STB19 **Fruits** : Parts, Classification - simple, Aggregate, Composite.
- STB20 **The Seed : Structure & Germination** : Dicot- exalbuminous & albuminous, Monocot exalbuminous & albuminous, Condition necessary for germination, Epigeal, Hypogeal.
- STB21 **Germination of Seed - Bean & Pea** : Hypogeal germination, Epigeal germination.
- STB22 **Dispersal of Fruits & Seeds** : Dispersal by - air, animals, water, explosion.
- STB23 **Photosynthesis** : Calvin benson cycle light reaction, Dark reaction, Requirements.
- STB24 **Plant Diseases** : Black rot, Late blight, Bacterial wilt, Smut, Brown spot, TMV, Brown rust, Yellow mosaic, Red rot, Bacterial blight, Powdery mildew, Leaf curl.
- STB25 **Reproduction in Plants** : Vegetative reproduction, Spore formation, Sexual reproduction of flowering plants.
- STB26 **Pollination** : Autogamy, Geitonogamy, Xenogamy, Anemophily, Hydrophily, Biotic (zoophily).
- STB27 **Double Fertilization** : Megasporogenesis, Microsporogenesis.
- STB28 **Artificial Vegetative Propagation** : Tissue culture, Cutting, Layering, Grafting.
- STB29 **Stem Modifications** : Underground modification, Subaerial modification, Aerial modification.
- STB30 **Root Modifications** : Modifications of tap root, Adventitious root and roots for support.
- STB31 **Hydrophytes** : External features & anatomical characters.
- STB32 **Mesophytes** : General description, external features & anatomical characters.

Each Rs. 225.00



BOTANY

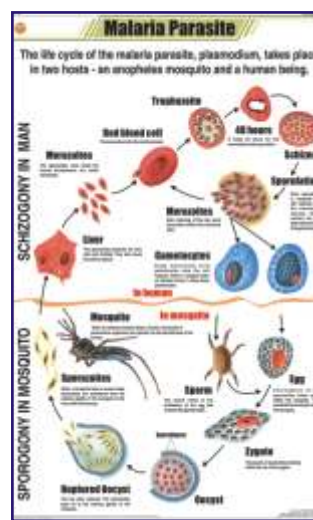
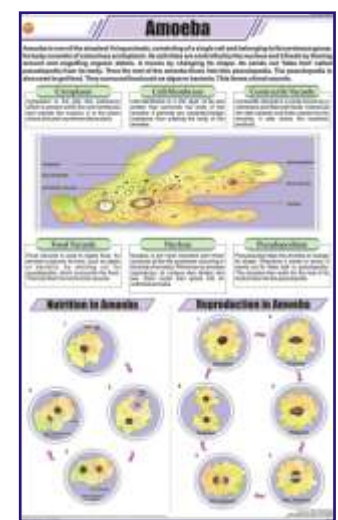
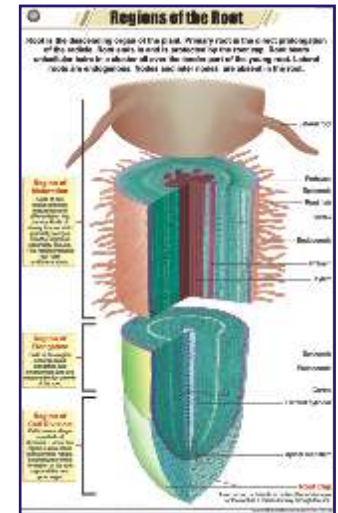
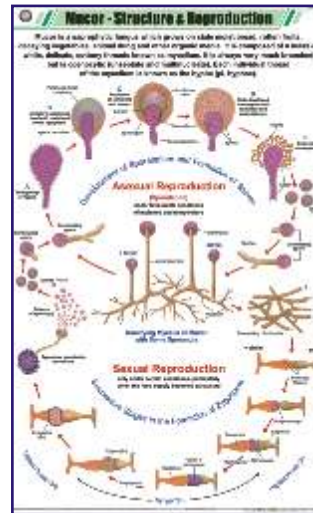
- STB33 **Xerophytes** : External features & anatomical characters.
- STB34 **Insectivorous Plants** : Sundew (drosera), Venus fly-trap (dionaea), Pitcher plant (nepenthes), Bladderwort (urticularia).
- STB35 **Fungi** : Classification, Symbiotic relationships, Economic importance, Harmful effects, Animal & plant fungal diseases.
- STB36 **Algae** : Classification, Uses, Harms.
- STB37 **Viruses** : Classification, Plant and animal viral diseases.
- STB38 **Bacteria** : Classification, Shape, Respiration, Chemical nature of cell wall, Growth & reproduction, Useful activities, Diseases.
- STB39 **Life Cycle of Fern** : Life cycle of pteridophyte (fern).
- STB40 **Life Cycle of Moss** : Life cycle of bryophyte (moss).
- STB41 **Spirogyra** : Structure, Reproduction.
- STB42 **Life Cycle of Mushroom** : Life cycle of fungi (mushroom).
- STB43 **Leaf Modification** : Tendrils, Spines, Thorns, Bracts, Flashy Leaves, Adhesive disc, Reproductive leaf, Phyllode, Insectivory.
- STB44 **Parasitic Plants** : Holoparasites - rafflesia, Ivy broomrape, cuscuta, Hemiparasites - Indian paintbrush, mistletoe, owl's clover.
- STB45 **Mucor** : Structure & reproduction of common mold.
- STB46 **Regions of Root** : Region of maturation, Elongation and cell division.
- STB47 **Vascular Bundle** : Xylem & Phloem tissues. **NEW**
- STB48 **Secondary Growth** : In plants **NEW**

Each Rs. 225.00

ZOOLOGY

- STZ01 **Animal Kingdom** : Classification in several phylum, Classification of sub-phylum vertebrata into different classes.
- STZ02 **Animal Cell** : Structure.
- STZ03 **Animal Cell Organelles** : Nucleus, Nuclear membrane, Cell membrane, Golgi bodies, Centriole, Ribosomes, Endoplasmic reticulum, Cilium, Flagellum, Mitochondria, Lysosome, Peroxisome.
- STZ04 **Animal Tissues** : Epithelial, Connective, Muscular, Nervous.
- STZ05 **Animal Cell Mitosis** : Cell division in animal somatic cells.
- STZ06 **Animal Cell Meiosis** : Reductional cell division.
- STZ07 **Gametogenesis in Animals** : Oogenesis, Spermatogenesis.
- STZ08 **Fertilization in Animals** : Structure of sperm & ovum, Fertilization process.
- STZ09 **Protozoa** : Classification into 4 classes- Rhizopoda (amoeba), Mastigophora (euglena, giardia), Ciliophora (paramecium), Sporozoa (plasmodium vivax).
- STZ10 **Amoeba** : Structure, Nutrition and reproduction.
- STZ11 **Malaria Parasite** : Life cycle of malaria parasite - plasmodium vivax.
- STZ12 **Paramecium** : Structure, Nutrition, Locomotion and reproduction.
- STZ13 **Hydra** : Structure, LS of body wall, Nematocyst, Reproduction & developmental stages.
- STZ14 **Liver Fluke** : Structure and life cycle.
- STZ15 **Tapeworm** : Morphology, Anatomy and general characteristics.
- STZ16 **Roundworm (Ascaris)** : Structure, Systems.
- STZ17 **Hookworm** : Structure, Life cycle.
- STZ18 **Life History of Mosquito** : Stages of life cycle of mosquito.
- STZ19 **Life Cycle of Butterfly**
- STZ20 **Life History of Housefly**
- STZ21 **Life History of frog**
- STZ22 **Human Blood** : Functions, Components, RBC structure, Blood group, Blood clotting.
- STZ23 **Body's Defense** : Types of Leucocytes, Vaccination, Structure of antibody, Acquired Immunity.
- STZ24 **Harmful Insects**
- STZ25 **Beneficial Insects**
- STZ26 **Food Habits of Birds**

Each Rs. 225.00



ZOOLOGY

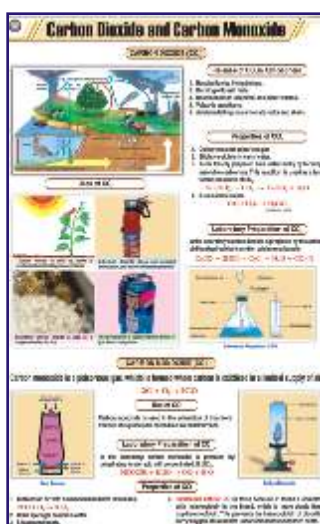
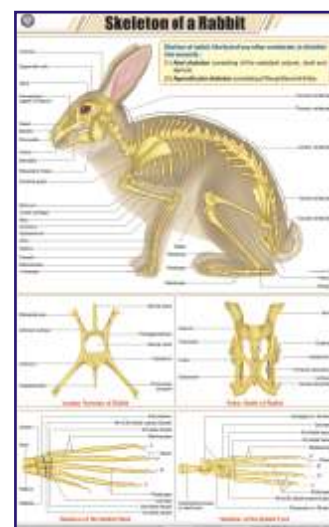
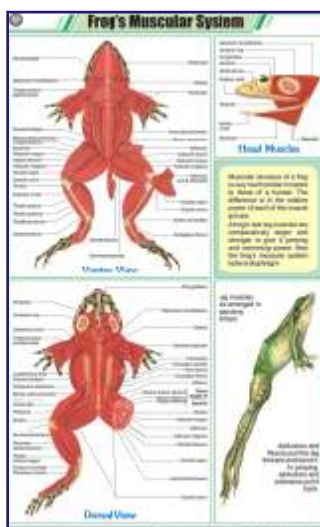
- STZ27 **Fish Anatomy** : Bony fish-general anatomy & skeletal system, Cartilaginous fish-general anatomy, Gill structure.
- STZ28 **Birth of a Bird's Chick**
- STZ29 **Earthworm I** : Ext. Morphology & Reproduction.
- STZ30 **Earthworm II** : Blood Circulation, Respiratory & Nervous system.
- STZ31 **Earthworm III** : Digestion, Skin & Excretion.
- STZ32 **Cockroach I** : Morphology & Reproduction.
- STZ33 **Cockroach II** : Blood Circulation, Respiratory & Nervous system.
- STZ34 **Cockroach III** : Digestion, Excretory, Skin & Muscles.
- STZ35 **Vertebrate Classes**
- STZ36 **Sense Organs** : Eye, Ear, Tongue, Skin, Nose.
- STZ37 **General Dissection of Rabbit** : Dissection of a mammal
- STZ38 **Neuron** : Structure, Synapse, Bipolar N., Unipolar N., Multipolar N.
- STZ39 **Early Development of the Frog**
- STZ40 **Frog's Morphology & Internal Structure**
- STZ41 **Frog's Urogenital System** : Male & Female urogenital system.
- STZ42 **Frog's Circulatory System** : Frog's heart (Bullfrog).
- STZ43 **Frog's Nervous System** : Brain of frog.
- STZ44 **Frog's Muscular System**
- STZ45 **Life Cycle of Cockroach**
- STZ46 **Skeleton of a Bird** : Skeleton of pigeon, Anatomy of flying.
- STZ47 **Skeleton of Rabbit** : Axial & appendicular skeleton of rabbit.

Each Rs. 225.00

CHEMISTRY

- STC01 **Atom and Atomic Structure** : JJ Thompson discharge tube experiment, Rutherford's gold leaf experiment, Chadwick, Goldstein, Rutherford & Bohr's contribution.
- STC02 **Chemical Reactivity of an Element** : Reactivity series of metals.
- STC03 **Chemical Reaction & its Characteristics**
- STC04 **Classification of Chemical Reactions** : Combination reaction, Decomposition reaction, Displacement reaction, Double displacement reaction, Redox reaction, Exothermic - endothermic reaction, Photochemical reaction.
- STC05 **Valencies of Elements**
- STC06 **Chemical Bonding** : Covalent bonding, Ionic bonding, Metallic bonding, Hydrogen bonding.
- STC07 **Combustion** : Types of combustion - rapid, slow, explosion, complete, incomplete, ignition temperature.
- STC08 **Separation of Substances** : Distillation, Fractional distillation, Loading, Filtration, Churning, Evaporation & crystallisation, Magnetic separation, Sedimentation & decantation, Centrifugation, Sieving, Winnowing, Sublimation, Separating funnel.
- STC09 **Atmosphere and Composition of Air** : Layers of atmosphere, Composition of air.
- STC10 **Occurrence and Forms of Carbon**
- STC11 **Carbon dioxide and Carbon Monoxide**
- STC12 **Carbonates and Bicarbonates** : Sodium carbonate, Calcium carbonate, Sodium bicarbonate.
- STC13 **Sulphur** : Extraction, Structure, Types, Effects of heat, Vulcanisation.

Each Rs. 225.00



CHEMISTRY

- STC14 **Mole Concept** : Avagadro number, Avogadro's hypothesis.
- STC15 **Composition of Water by Weight** : Berzelius, Dulong & Dumas method, Morley's method, Proust's law.
- STC16 **Different Kinds of Cells** : Galvanic cell, Dry cell, Car battery, Rechargeable cell, Sodium sulphur battery, Solar cell, Fuel cell, Mercury zinc button cell.
- STC17 **Electroplating & Corrosion**
- STC18 **Cement and Concrete**
- STC19 **Manufacture of Glass**
- STC20 **Alkanes** : General formula, Nomenclature, Applications, Methane molecule.
- STC21 **Alkenes** : General formula, Functional group, Structure and IUPAC names, Preparation, Applications.
- STC22 **Alkynes** : General formula, Functional group, Nomenclature, Structure & IUPAC names, Preparation, Applications.
- STC23 **Alcohols** : General formula, Functional group, Nomenclature, IUPAC names & structure, Preparation, Uses of ethanol.
- STC24 **Esters** : General formula, Nomenclature, Common esters, Preparation, Application.
- STC25 **Organic Acids** : Functional group, Common organic acids, Applications.
- STC26 **Soaps and Detergents** : Structure, Cleansing action, Problem with hard water.
- STC27 **Plastics** : Thermoplastics - PVC & polythene, Thermosetting - bakelite & melamine.
- STC28 **Synthetic Fibres** : Rayon, Polyester, Nylon, Acrylic.
- STC29 **Blast Furnace** : Blast furnace, Manufacture of steel-basic oxygen process & electric arc process.
- STC30 **Aluminium Metallurgy** : Bayer's process, Hall-Heroult process, Uses.
- STC31 **Copper Metallurgy** : Important ores, Extraction process, Electrolysis, Uses.
- STC32 **Extraction of Zinc** : Roasting, Pyrometallurgical Process.
- STC33 **Prep. of Sodium Hydroxide & Sodium Carbonate** : Castner cellner cell, Solvay process.
- STC34 **Prep. of Nitrogen and Nitric acid** : Laboratory prep. of nitrogen & nitric acid, Cryogenic distillation, Ostwald's process.
- STC35 **Prep. of Chlorine and Hydrochloric acid**
- STC36 **Prep. of Sulphur Dioxide & Sulphuric acid** : Contact process.
- STC37 **Prep. of Ammonia and Haber Process**
- STC38 **Prep. of Oxygen and Liquefaction of Air**
- STC39 **Prep. of H₂ & CO₂** : Lab preparation of hydrogen and carbon dioxide, Steam re-forming of natural gas.
- STC40 **Manufacture of Bleaching Powder** : Hasenclever plant, Bachmann's plant.
- STC41 **Manufacture of Phosphorus** : Manufacture of white phosphorus and red phosphorus.
- STC42 **Crystal Lattices**
- STC43 **Close Packed Structures**

Mole Concept

The word 'mole' is a unit of measurement. It is used to measure the amount of a substance. One mole of a substance contains 6.022 x 10²³ particles (atoms, molecules, ions, etc.).

THE AVOGADRO NUMBER

Substance	Mass (g)	Number of particles
12g of Carbon	12	6.022 x 10 ²³
2g of Hydrogen	2	6.022 x 10 ²³
32g of Sulphur	32	6.022 x 10 ²³
100g of Iron	100	6.022 x 10 ²³

AVOGADRO'S HYPOTHESIS

Equal number of particles under the same conditions of temperature and pressure, occupy equal volumes.

EMPIRE ON AN ELECTRON

Electrons are present in all atoms. They are negatively charged particles. The mass of an electron is very small compared to that of a proton.

BLAST FURNACE

The blast furnace is used to extract iron from its ore. It is a tall cylindrical vessel. The iron ore is fed from the top. The coke is fed from the bottom. The gas is collected from the top. The molten iron is collected from the bottom.

MANUFACTURE OF STEEL

CASTING PROCESS

ROLLING PROCESS

Extraction of Zinc

Zinc is extracted using two processes: **Roasting** and **Reduction**.

Roasting: The zinc ore is heated in a furnace to convert it into zinc oxide.

Reduction: The zinc oxide is reduced to zinc metal using carbon monoxide.

Manufacture of Phosphorus

Production of White Phosphorus

White phosphorus is produced by heating phosphate rock with coke in an electric furnace.

Converting White Phosphorus into Red Phosphorus

White phosphorus is converted to red phosphorus by heating it in a closed vessel.

Sodium Chloride Crystal

Sodium chloride is a common salt. It is used in many industries. It is also used in the food industry.

Crystal Structure

Sodium chloride has a cubic crystal structure. The ions are arranged in a regular pattern.

Acids, Bases and Salts

ACIDS

Acids are substances that taste sour. They turn blue litmus paper red. They react with metals to produce hydrogen gas.

BASES

Bases are substances that taste bitter. They turn red litmus paper blue. They react with acids to produce salt and water.

SALTS

Salts are substances that are formed from acids and bases. They are used in many industries.

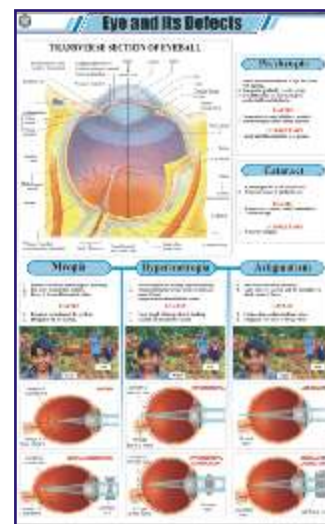
Each Rs. 225.00

CHEMISTRY

- STC44 Sodium Chloride Crystal
- STC45 Acids, Bases and Salts
- STC46 Electrolysis : Electrolysis of molten NaCl, Faraday's laws of electrolysis, Refining, Electroplating.
- STC47 Atoms and Molecules : Atomic No, Mass No, Istopes, Isobars, Isotones, Molecules, Chemical formula.
- STC48 Solids, Liquids & Gases : Forms of matter, Change of state.
- STC49 Shapes of Atomic Orbitals : Quantum numbers, Shapes of s, p, d & f orbitals. **NEW** Each Rs. 225.00

PHYSICS

- STP01 Motion : Linear motion - rectilinear, curvilinear; Rotational motion, Oscillatory motion, Periodic motion.
- STP02 Changes Around Us
- STP03 Metric Weights and Measures : SI units and their multiples and submultiples.
- STP04 Measurements : Standard systems of measurements.
- STP05 Sound : What is sound?, Decibel scale of different sounds, Characteristics of sound, Sonic boom, Ultrasound & echo.
- STP06 Wave Motion : Transverse wave, Longitudinal wave.
- STP07 Simple Machine : Lever , Pulley, Wedge, Inclined plane, Screw, Wheel & Axle.
- STP08 The Lever : Lever of - first class, second class, third class.
- STP09 Principle of Archimedes
- STP10 Pascal's Law
- STP11 Reflection of Light : Laws of reflection, Image formation by plane & spherical mirrors.
- STP12 Refraction Through a Glass Slab : Lateral displacement, Refractive index, Refraction through different mediums, Total internal reflection.
- STP13 Refraction Through Prisms : Dispersion, Refraction through equilateral prism, Re-combination of spectrum colours, Rainbow.
- STP14 Refraction of Light Through lenses : Image formation by concave and convex lenses.
- STP15 Optical Instruments : Slide projector, Binoculars, Telescope, Compound microscope, Magnifying glass camera, Periscope.
- STP16 Microscope : Compound microscope, Electron microscope, Ray diagram.
- STP17 Telescope : Refracting telescope, Ray diagram of refracting & reflecting (cassegrain) telescope.
- STP18 Eye and its Defects : TS of eyeball, Presbyopia, Cataract, Myopia, Hypermetropia, Astigmatism.
- STP19 Electric Current-Sources-Effects
- STP20 Static Electricity : Electrostatic induction, Lightning spark, Photocopier.
- STP21 Current Electricity : Electric current, Conventional current, Wiring of a plug, Transmission of electricity, Electric circuit inside a torch and a house. Each Rs. 225.00

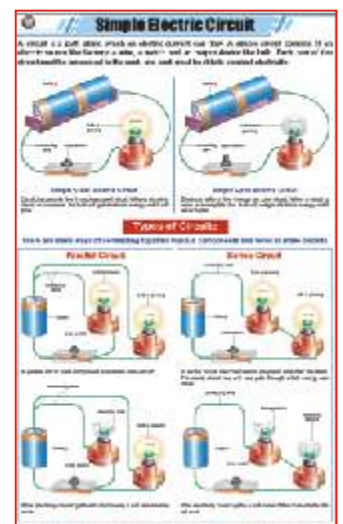
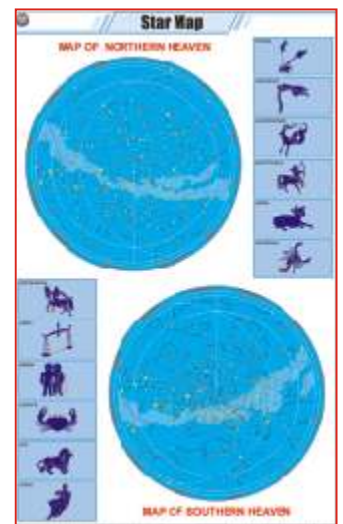
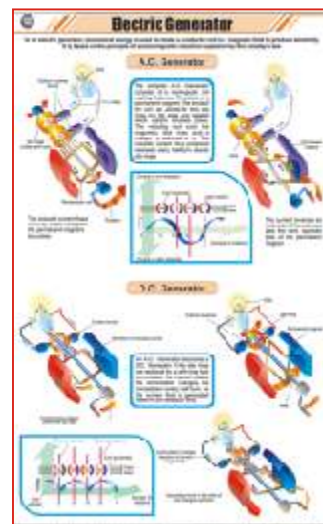
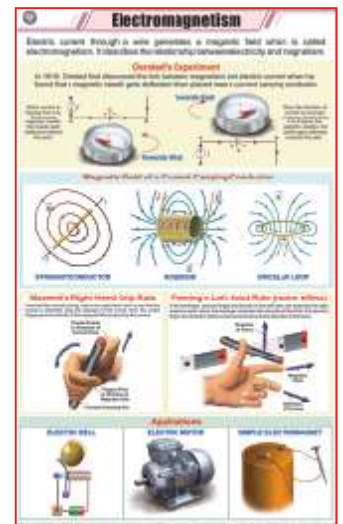
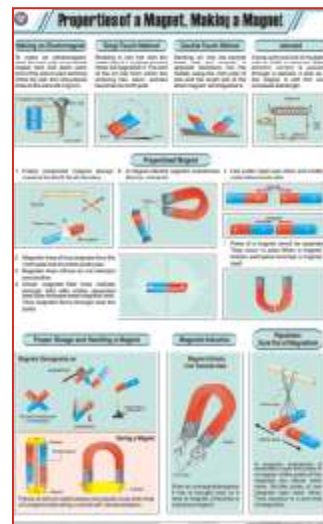


Illustrations are selective. For orders refer the list above.

PHYSICS

- STP22 **Ohm's Law & Electrical Resistance** : Ohm's law, Factors affecting resistance, Resistance of series and parallel combination.
- STP23 **Electric Circuit's Components Symbols**
- STP24 **Magnetism** : Earth's magnetic field, Magnetic compass, Types of magnets, Theory of magnetism, Vah allen radiation belt.
- STP25 **Properties of a Magnet, Making a Magnet**
- STP26 **Electromagnetism** : Oersted's experiment, Magnetic field of a current carrying conductor markwell's right hand grip rule, Fleming's left hand rule, Applications.
- STP27 **Electromagnetic Induction** : Induction using bar magnet, Self-induction, Mutual induction, Fleming's right hand rule, Applications.
- STP28 **Electric Motor** : simple DC & AC motor, commercial electric motor, applications.
- STP29 **Electric Bell**
- STP30 **Electric Generator** : AC & DC generator.
- STP31 **Dynamo** : Dynamo principle, Bicycle bottle dynamo, Faraday's disc dynamo : Pixii's commutated DC dynamo.
- STP32 **Force** : Effects of force, Combining force.
- STP33 **Friction** : Static, kinetic & rolling friction. Advantages & disadvantages of friction, Methods of increasing or decreasing friction.
- STP34 **Gravitation** : Universal law of gravitation, Gravitational constant G, Acceleration due to gravity, Weight, Weightlessness.
- STP35 **Moment and Couple** : Moment (Torque), Couple.
- STP36 **Work and Power**
- STP37 **Nuclear Fusion** : Proton-Proton chain, CNO cycle, Controlled fusion, Hydrogen bomb.
- STP38 **Nuclear Fission** : Chain reaction, Spontaneous fission, Controlled fission, Neutron induced fission, Breeding plutonium-239, Enrichment of nuclear fuel.
- STP39 **Nuclear Reactor** : Pressurized water reactor, Fast nuclear reactor.
- STP40 **Radioactivity** : Types of radioactive radiations, Penetrating power, Carbon dating, Decay of uranium-238.
- STP41 **Radio Telescope** : Radio telescope, Astronomical interferometers.
- STP42 **X-Ray**
- STP43 **Television**
- STP44 **Multistage Rocket**
- STP45 **Wind Mill**
- STP46 **Petrol Engine** : Four stroke petrol engine.
- STP47 **Steam Engine**
- STP48 **Diode** : Types & symbols.
- STP49 **Universe I (Life Cycle of a Star)**
- STP50 **Universe II (Comets & Meteors)** : Structure of comet, Meteorite strike, Types of meteorites.
- STP51 **Star Map**
- STP52 **Newton's Laws of Motion** : Newton's first, Second & third law of motion.
- STP53 **Simple Electric Circuit** : Open & close circuit, Parallel circuit, Series circuit.

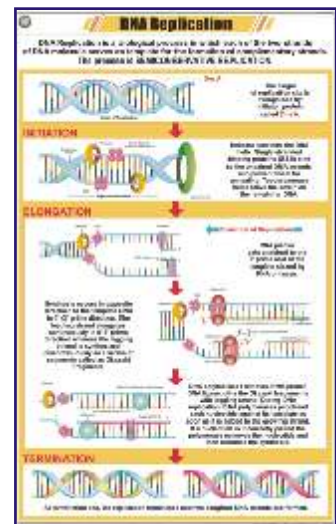
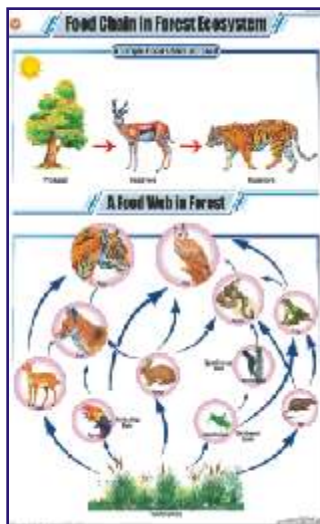
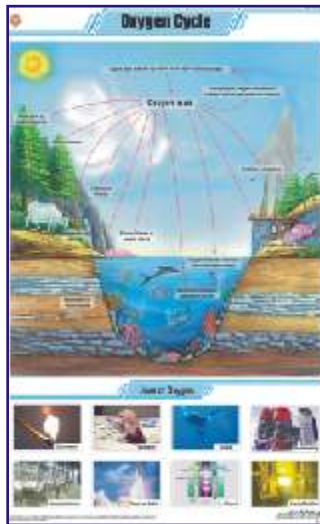
Each Rs. 225.00



GENERAL

- STG01 **The Cell Theory** : Prokaryotic, Eukaryotic, Unicellular, Multicellular, Cell theory.
- STG02 **DNA** : Z DNA, B DNA, Double helix structure, Nucleotide.
- STG03 **RNA** : rRNA, mRNA, tRNA, Flow of genetic information, Virus structure.
- STG04 **Levels of Organization**
- STG05 **Origin of Life** : Miller and Urey experiment, Steps in origin of life, Coacervates.
- STG06 **Cellular Respiration (Kreb's Cycle)** : Glycolysis, Krebs TCA cycle, electron transport chain.
- STG07 **Animal Husbandry** : Breeding, Feeding, Weeding, Heeding.
- STG08 **Economic Plants**
- STG09 **Basic Agricultural Practices**
- STG10 **Medicinal Plants - I**
- STG11 **Medicinal Plants - II**
- STG12 **Energy Needs** : Hydro, Chemical, Solar, Wind, Bio, Magnetic, Nuclear, Sound & Light energy.
- STG13 **Fossil Fuels** : Types-solid, liquid, gaseous, calorific value, characteristics coal & petroleum, Fractional distillation.
- STG14 **Petroleum & Natural Gas** : Formation of petroleum, Oil drilling, Fractional distillation.
- STG15 **Renewable Sources of Energy**
- STG16 **Nuclear Energy** : Nuclear energy power plant, Fission, Fusion, Atomic bomb, Hydrogen bomb, Uses, Effects.
- STG17 **Bio-Gas** : Fixed dome type, Floating gas holder type.
- STG18 **Nitrogen Cycle**
- STG19 **Oxygen Cycle**
- STG20 **Carbon Cycle**
- STG21 **Fire & Fire Extinguishers** : Classification of fire, Uses of fire extinguisher, Types of fire extinguishers. Water-CO₂ type, Mechanical foam (AFFF) type, Dry chemical powder (DCP) type, Carbon dioxide type.
- STG22 **Soil- A natural Resource** : Uses, Soil erosion, Soil conservation, Soil pollution.
- STG23 **How Soil is formed and Soil Profile** : Agents of weathering, Layers of soil.
- STG24 **Types of Soils in India**
- STG25 **Food Chain in Forest Ecosystem** : Simple food chain, Food web.
- STG26 **Solar Cooker** : Solar cooker, - Box type, Parabolic type, Panel type.
- STG27 **Water Harvesting**
- STG28 **Purification of Water** : Boiling, Distillation, Filtration, Chlorination, Reverse osmosis, Domestic RO system.
- STG29 **Poultry** : Indegenious breeds, Exotic breeds, Equipments, Behaviour under brooders.
- STG30 **Sericulture (L.H. Silkworm)** : Stages of silk production, Life cycle of bombyx mori.
- STG31 **Apiculture (L.H. Honeybee)** : Queen honey bee, Artificial bee hive, Honey extractor & extraction.
- STG32 **Food Pyramid** : Food pyramid, Components, Balanced diet.
- STG33 **Microorganisms**
- STG34 **Mutation** : Insertion, Duplication, Deletion, Inversion, Translocation, Frame shift, Point mutation.
- STG35 **Enzymes** : Structure, Mechanism, Classification, Enzyme activity.
- STG36 **DNA Replication** : Initiation, Elongation, Termination.
- STG37 **Osmosis**
- STG38 **Evidence of the Evolution of Life** **NEW**
- STG39 **Food Chain in Pond Ecosystem** **NEW**
- STG40 **Food Chain in Desert Ecosystem** **NEW**

Each Rs. 225.00

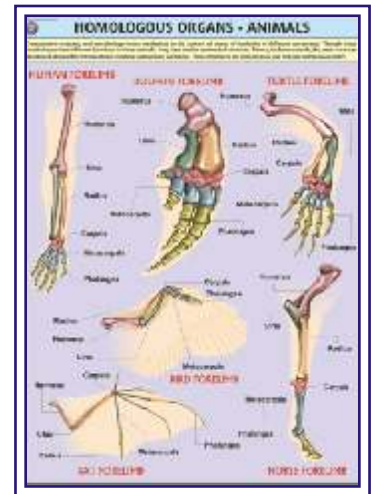
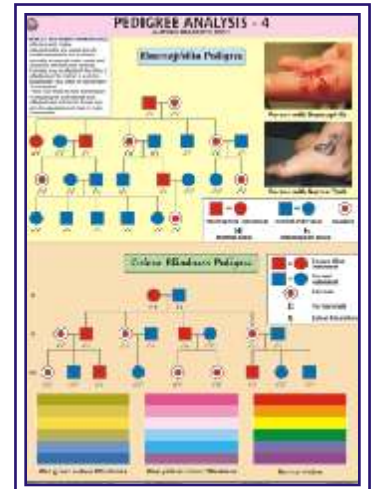


These charts are highly illustrative.

GENETICS AND EVOLUTION CHARTS

Printed on Polyart Synthetic Paper. Size 70 x 100 cm. Price Rs. 275.00 Each

- GE01S **Pedigree Analysis-1** : showing standard symbols used in Pedigree Analysis and Sample Pedigree.
- GE02S **Pedigree Analysis-2** : showing Autosomal Dominant Trait Pedigree such as Myotonic Dystrophy and Tongue Curler Pedigree.
- GE03S **Pedigree Analysis-3** : showing Autosomal Recessive Trait Pedigree such as Inheritance of Attached Ear Lobe and Inheritance of Sickle Cell Anaemia.
- GE04S **Pedigree Analysis-4** : showing X-linked Recessive Trait Pedigree such as Haemophilia and Colour Blindness Pedigree.
- GE05S **Pedigree Analysis-5** : showing X-linked Dominant Trait Pedigree such as Hypophosphatemia and Droopy Eyelids Pedigree.
- GE06S **Pedigree Analysis-6** : showing Y-linked Trait - Hairy Ear and Mitochondrial Inheritance Pedigree.
- GE07S **Homologous Organs** - Animals: showing Forelimbs of Bat, Turtle, Horse, Human, Bird and Dolphin demonstrating Homology.
- GE08S **Analogous Organs** - Animals: showing Wings of Bird, Butterfly, Pterosaur and Bat demonstrating Analogy.
- GE09S **Homologous Organs** - Plants: showing thorn of Bougainvillea, tendrils of Cucurbita, fleshy cylindrical stem of Euphorbia, fleshy flattened stem of Opuntia, leafy shoots of Chrysanthemum and pineapple representing Plant Homology.
- GE10S **Analogous Organs** - Plants: showing thorn of Pyracantha, spine of Berberis vulgaris, prickles of Prosopis grandulosa and stipular spines of Black Locust representing Plant Analogy.
- GE11S **Hybridisation-1 (Monohybrid Cross)** : Cross between Purple coloured and White coloured flower Pea Plant demonstrating inheritance of one dominant character and expression of recessive parental trait without blending in F2 generation.
- GE12S **Hybridisation-2 (Dihybrid Cross)** : Cross between Pea Plants differing in two traits (pod colour & plant height) showing segregation of one pair of character is independent of the other pair of characters.
- GE13S **Hybridisation-3 (Incomplete Dominance)** : Cross between true breeding Red and White Snapdragon flower plants showing one character is not completely dominant over other.



CHARTS ON AIDS

Printed on Polyart Synthetic Paper. Size 70 x 100 cm. Price Rs. 275.00 Each

- AS01S **HIV** : showing structure and mechanism of infection of Human Immunodeficiency Virus
- AS02S **Transmission of HIV** : explaining different ways which can spread the HIV infection and cause AIDS.
- AS03S **Prevention** : showing various measures which, when adopted, prevent transmission of HIV infection.
- AS04S **How AIDS is not transmitted** : showing various routine tasks which are not involved in transmission of HIV.
- AS05S **Progress of Infection** : showing how HIV infection typically progresses through various stages.
- AS06S **Opportunistic Diseases** : depicting complications which an AIDS patient develops that otherwise wouldn't normally occur in a person with a healthy immune system.
- AS07S **Sexually Transmitted Diseases** : showing various sexually transmitted diseases which increase the chances of acquiring HIV infection by an individual when exposed to the virus.
- HP26S **Human Immune System** : showing different organs involved in a healthy immune mechanism. As AIDS progressively weakens the immune system, chart gives an outline of functions of Immune System to better understand what AIDS can do.



CHEMISTRY LAB DISPLAY CHARTS

PERIODIC CHART OF ELEMENTS



A Most detailed chart printed in multi colours showing Solids, Liquids and Gases in separate distinctive colours together with their Atomic Numbers, Density, Atomic Radius, Melting Point, Electronic Structure, Electro negativity, First Ionization Energy, Oxidation State and Crystal structure.



PT09 Size 96 x 70 cm Periodic Chart
Elementary RS. 200.00

PT01	Size 140 × 100 cm Laminated	Rs. 420.00
PT02	Size 100 × 70 cm Laminated	Rs. 200.00
PT03S	Size 100 × 70 cm Synthetic	Rs. 275.00
PT04	Size 50 × 35 cm Paper	Rs. 14.00
PT05	Size 50 × 35 cm Laminated w/o rollers	Rs. 40.00
PT06	Size 100 × 75 cm Paper folded in Book form	Rs. 40.00
PT07S	Size 100 x 70 cm Mendeleev's Periodic Chart Synthetic	Rs. 275.00
PT08	Size 90 × 55 cm Laminated	Rs. 170.00



LABORATORY SAFETY

Price Rs. 275.00

Showing basic safety measures to be followed while working in a chemistry laboratory. Printed on Polyart Synthetic Paper.

Size 70 x 100 cm.

Code CL01S



LABORATORY TECHNIQUES

Price Rs. 275.00

Showing various procedures and techniques generally used in a chemistry laboratory. Printed on Polyart Synthetic Paper.

Size 70 x 100 cm.

Code CL02S



pH COLOUR CHART

Price Rs. 275.00

Reference colours indicated by universal indicator with different acidic or basic substances to show their approximate ph values. Printed on Polyart Synthetic Paper. Size 70 x 100 cm.

Code CL03S



LABORATORY FIRST AID

Price Rs. 275.00

Showing various first aid techniques and procedures used during an accident in a Laboratory. Printed on Polyart Synthetic Paper.

Size 70 x 100 cm.

Code CL04S

LAB SAFETY CHARTS

Size 30 × 45 cm, Printed on 300 gsm art paper & lamination on both sides.

NEW

LSC01	Protect yourself, Dress appropriately	LSC07	Never suck liquid chemicals by mouth, Use a pipette bulb
LSC02	Always wash your hands before and after the experiment	LSC08	Beware! Hot & cold look a like
LSC03	Keep the testing area and vessels clean before & after the experiment	LSC09	Never touch or taste chemicals
LSC04	Never eat or drink while performing experiments	LSC10	Always experiment under supervision, Inform supervisor in case of accident
LSC05	Avoid using glassware that is cracked or chipped	LSC11	Act responsibly, Don't fool around in the laboratory
LSC06	Keep your face away from reaction vessels	LSC12	Always keep the fire extinguisher & first aid box within reach

Price Rs. 960.00 per set of 12

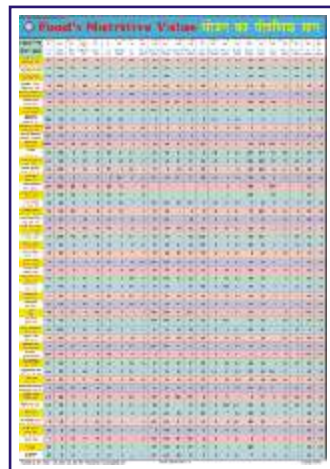


Laminated with thick plastic film on both sides & fitted with superior plastic rollers.

CHARTS ON FOOD AND NUTRITION

Size 70 x 100 cm. English & Hindi combined. Laminated Each Rs. 210.00

- FN01 OUR FOOD :** Chart shows various components and functions of food. It also illustrates food pyramid mentioning balance diet and daily requirement of nutrients by different age groups.
- FN02 PROTEINS :** Chart shows both animal and plant sources of protein. It also explains various functions performed by proteins in our body and some special conditions of high protein needs.
- FN03 FATS :** Chart shows a brief classification of fats with a mention of essential fatty acids. It also shows some of the important functions and sources of fats.
- FN04 CARBOHYDRATES :** Chart shows classification of carbohydrates as simple and complex with their various functions in the body. It also shows various foods rich in carbohydrates.
- FN05 VITAMINS :** Good explanatory chart depicting both fat soluble and water soluble vitamins with their various sources and reasons of requirement in the body.
- FN06 MINERALS :** Important minerals like Sodium, Iron, Calcium, Iodine etc. required in our body to live a healthy life are shown in the chart. Chart also shows various functions they perform and their sources.
- FN07 WATER & ROUGHAGE :** Chart shows the importance of water and roughage and some major functions performed by them in the body. Chart also gives a good knowledge about their sources.
- FN08 DEFICIENCY DISEASES :** Chart shows the havoc conditions arised due to deficiency of various nutrients in the body and their symptoms. The understanding of chart will indicate the importance of good balanced diet.
- FN09 OVERNUTRITION DISORDERS :** Chart shows that not only deficiency but also the over consumption of food is not good for health. Various overnutritional disorders with their causes and symptoms are depicted in the chart.
- FN10 Food's Nutritive Value :** Chart shows the nutrient's composition of various common foodstuffs in a tabular form.



DISASTER MANAGEMENT CHARTS

Size 70 x 100 cm. English & Hindi combined. Laminated Each Rs. 210.00

NEW

- DMS01 What is a Disaster
- DMS04 Earthquake
- DMS05 Tsunami
- DMS06 Floods
- DMS07 Cyclone
- DMS08 Forest Fire

Coming Soon...

- DMS02 Disaster Management Cycle-1
- DMS03 Disaster Management Cycle-2
- DMS09 Landslide
- DMS10 Nuclear Disaster
- DMS11 Chemical Disaster
- DMS12 Biological Disaster



ENVIRONMENTAL SCIENCE

Size 50 x 75 cm. English. Laminated Each Rs. 130.00

- ES01 Garbage Management **NEW**

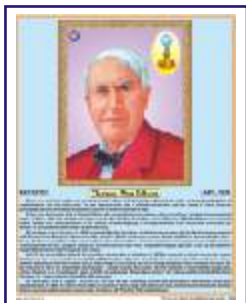
Coming Soon...

- Greenhouse effect
- Global warming
- Sewage treatment

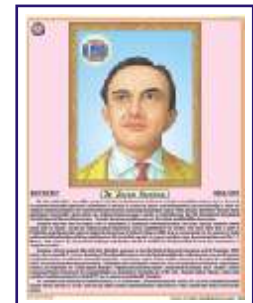


LIFE SKETCH OF SCIENTISTS

Size 45 x 57 cm Approx. Laminated and fitted with plastic rollers.



- | | | |
|-----------------------|---------------------|---------------------|
| LSS01 Albert Einstein | LSS08 H.J. Bhabha | LSS15 Raja Ramanna |
| LSS02 A.P.J. Kalam | LSS09 J.C. Bose | LSS16 Ramanujan |
| LSS03 Archimedes | LSS10 Louis Pasteur | LSS17 Rutherford |
| LSS04 Birbal Sahni | LSS11 Madam Curie | LSS18 S.N. Bose |
| LSS05 C.V. Raman | LSS12 Meghnad Saha | LSS19 Sarabhai |
| LSS06 Darwin | LSS13 Mendeleev | LSS20 Thomas Edison |
| LSS07 Galileo Galilie | LSS14 Newton | |



(Available in English as well as in Hindi) Each Rs. 100.00

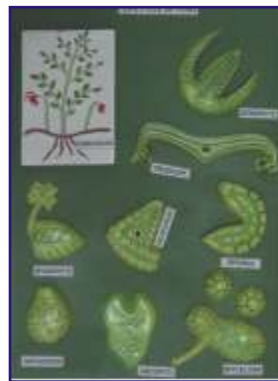
(Above product code is for English. Please add H to the code for Hindi)

BIOLOGY MODELS

BOTANY MODELS

Made of Fiber Glass on MDF Board. Each Model size 60 x 45 cm Price Rs. 1800.00 each

BMB01	Plant Cell	BMB08	T. S. Monocot Root	BMB15	Life Cycle : Moss
BMB02	Germination of Seed	BMB09	T. S. Dicot Root	BMB16	Life Cycle : Fern
BMB03	Fertilization & Angiosperms	BMB10	T. S. Monocot Stem	BMB17	Life Cycle : Fungus
BMB04	Plant Cell Meiosis	BMB11	T. S. Dicot Stem	BMB18	Spirogyra
BMB05	Plant Cell Mitosis	BMB12	T. S. Monocot Leaf	BMB19	Pitcher Plant
BMB06	L. S. Flower	BMB13	T. S. Dicot Leaf	BMB20	Funaria Plant
BMB07	L. S. Ovary	BMB14	Root Tip		



ZX-2200E

Types of Ovules

- Price Rs. 3525.00
- 4 pieces model on board.
- Model shows anatropous, orthotropous, amphitropous and hemi-anatropous ovules.
- Size : 45x60x3
- 9 parts labeled in total.



ZX-2600E

L.H. of Angiosperm

- Price Rs. 3525.00
- Model is a set of 19 piece.
- Model is mounted on board to show the life cycle of an angiosperm.
- Size : 60x45x3 cm.
- 13 parts labeled in total.



ZX-2500E

Monocot Seed Germination

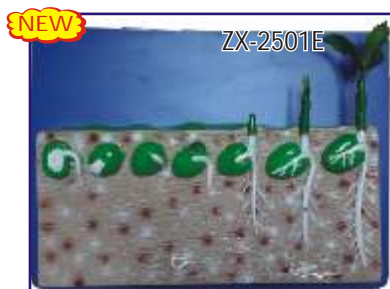
- Price Rs. 2475.00
- Stages of germination (Hypogeal) in maize is shown.
- Mounted on wooden base.
- Size: 56 x 41 x 9 cm
- 8 parts labeled in total



ZX-2501E

Dicot Seed Germination

- Price Rs. 2475.00
- Stages of germination (Hypogeal) in pea is shown.
- Mounted on wooden base.
- Size: 56 x 41 x 9 cm.
- 8 parts labeled in total



MODELS OF FLOWERS



Made of Fiber Glass on stand.

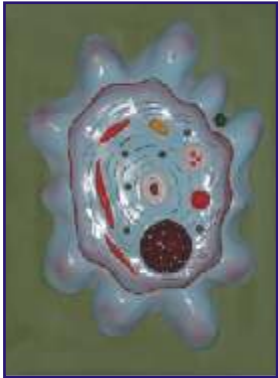
Price Rs. 1275.00 each

- BMF01 Typical Flower
- BMF02 Liliaceae Flower
- BMF03 Rosaceae Flower

ZOOLOGY MODELS

Made of Fiber Glass on MDF Board. Each Model Size 60 x 45 cm Price Rs. 1800.00 each

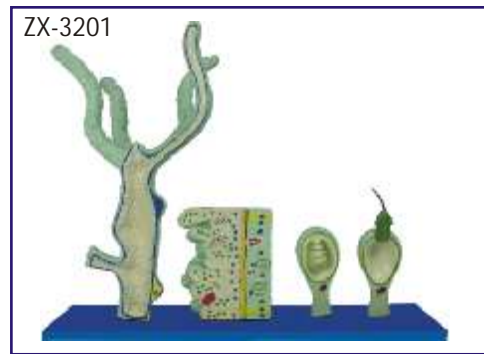
BMZ01	Animal Cell	BMZ08	Malarial Parasite	BMZ15	Development of Frog
BMZ02	Animal Cell Meiosis	BMZ09	Bacteria	BMZ16	Life History of Silk Worm
BMZ03	Animal Cell Mitosis	BMZ10	Virus	BMZ17	Life History of Mosquito
BMZ04	Amoeba	BMZ11	Frog Dissection	BMZ18	Life History of Honey Bee
BMZ05	Paramecium	BMZ12	Rat Dissection	BMZ19	Life History of Butterfly
BMZ06	Hydra	BMZ13	Fish Dissection	BMZ20	Life Cycle of Tapeworm
BMZ07	Euglena	BMZ14	Rabbit Dissection		



ZX-3200E Tape Worm

• Price Rs. 7050.00

- Set of 8 pieces model shows scolices of beef tapeworm (Taenia Saginla), pork tapeworm (Taenia Solium), mature egg, larval stage tapeworm and longitudinal sections of gravid, immature and mature proglottid.
- Size: 55x40x6 cm.
- 27 parts labeled in total.



ZX-3201 HYDRA

• Price Rs. 3300.00

- 4 piece model mounted on board.
- Significant anatomical features shown include ectoderm, mesoglea, coelenteron, male testis and female egg cells, buds, hypostome, nematoblast cells, cnidoblast etc.
- 28 parts are labeled in total.

ZX-3208E Bony Fish General Anatomy

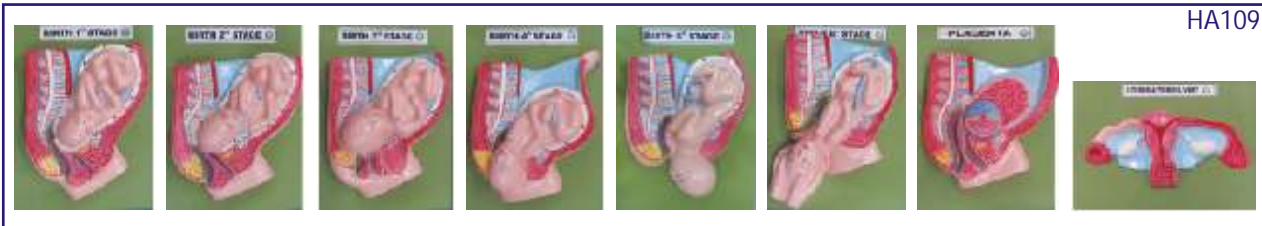
• Price Rs. 7800.00

- Replica model on stand of a bony fish (perch)
- Model is longitudinally dissected in 5 parts.
- Details of external features are shown on one side & internal anatomy is shown on other side.
- Removable parts are magnetically secured in position. 42 parts labeled in total.
- Life size.



SPECIAL MODELS ON HUMAN ANATOMY

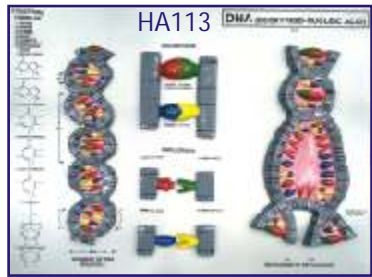
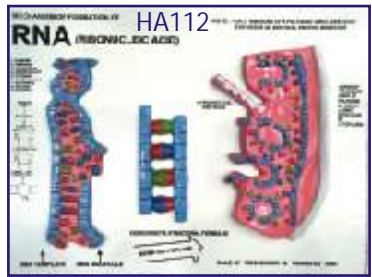
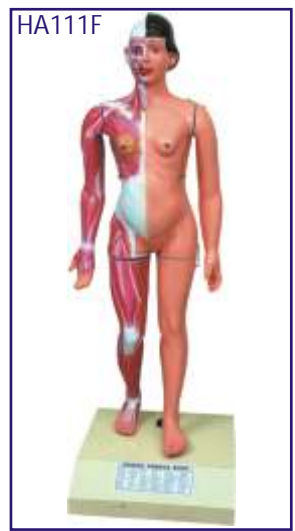
- HA101A **HUMAN BODY TORSO** - Torso with head with detachable internal structure of Head and neck, Organs of Thorax and abdomen cavities of the viscera can be emptied, for study of blood vessels. Dissectable in 12 parts made of Fibre Glass painted in natural colours. Made of Fiber Glass. Magnetic. Life Size Rs. 10500.00
- HA101 **HUMAN BODY** - Torso with head with detachable internal structure of Head and neck, Organs of Thorax and abdomen cavities of the viscera can be emptied, for study of blood vessels. Dissectable in 12 parts made of Fibre Glass painted in natural colours. Made of Fiber Glass. Life Size Non magnetic. Rs. 7125.00
- HA102 **Human Body** - Torso Small size Rs. 1950.00
- HA103 **HUMAN SKELETON** - Life size made of fibre glass. All the bones shoulder & hip joints clearly depictable Rs. 3960.00
- HA103S **Stand for above** Each Rs. 2100.00
- HA104 **HUMAN SKELETON** - Plastic size 70 cm with stand. Rs. 900.00
- HA105 **HUMAN SKELETON** - Plastic size 40 cm with stand. Each Rs. 210.00
- HA106 **Dummy with Doll** made of Fibre Glass Each Rs. 5250.00
- HA106A **Dummy Baby for Dummy with Doll** Each Rs. 1500.00
- HA107 **Female Pelvis with child** Each Rs. 1875.00
- HA108 **Female Pelvis with reproductive organs** Each Rs. 1950.00



- HA109 **Delivery Process Models set of 8** Set Rs. 10200.00
- HA110 **Development of Fetus/Embryo set of 9** Set Rs. 4800.00



- HA110L **Development of Fetus/Embryo set of 9 Large size** set Rs. 11250.00
- HA111F **Full Size Human Female Body Fibre Glass** Each Rs. 45000.00
Showing organs & muscles
- HA111M **Full Size Human Male Body Fibre Glass** Each Rs. 45000.00
Showing organs & muscles
- HA112 **RNA 60x 45 cm** Each Rs. 1800.00
- HA113 **DNA 60x 45 cm** Each Rs. 1800.00
- HA116 **Human Placenta Model made of Fiber Glass** Each Rs. 1950.00



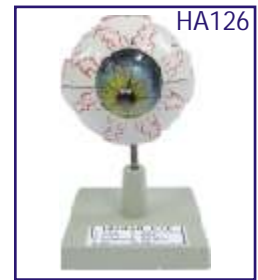
SPECIAL MODELS ON HUMAN ANATOMY

Dissectable Models (Fibre Glass)

HA126	Eye Ball	Each Rs. 450.00
HA127	Human Heart	Each Rs. 450.00
HA128	Human Ear	Each Rs. 450.00
HA129	Human Brain	Each Rs. 450.00
HA130	Human Kidney	Each Rs. 450.00

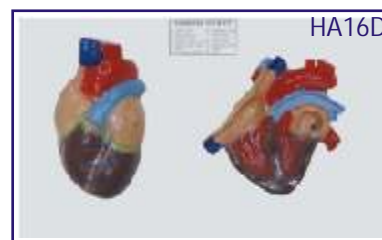
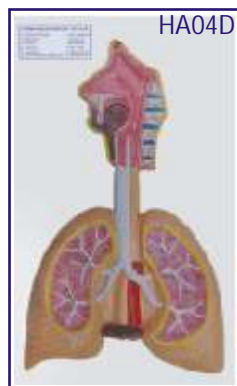
Fibre Glass Models (Wooden Base) size 81 × 31 cm

HA151	Human Digestive System	Each Rs. 1800.00
HA152	Human Blood Circulatory	Each Rs. 1800.00
HA153	Human Nervous System	Each Rs. 1800.00
HA154	Human Reproductive Male	Each Rs. 1800.00
HA155	Human Reproductive Female	Each Rs. 1800.00
HA156	Human Excretory System	Each Rs. 1800.00
HA157	Human Respiratory System	Each Rs. 1800.00
HA201	Nursing Manikin Female Made of Fibre Glass Life Size	Each Rs. 27750.00
HA202	Nursing Manikin Male Made of Fibre Glass Life Size	Each Rs. 27750.00



HUMAN ANATOMY 3-D MODELS

Deluxe Quality, Made of Fiber Glass, Mounted on Wooden Board
Size 30 × 50 cm Price Rs. 750.00 each



HA01D Teeth	HA11D Spinal Cord	HA21D Reproductive Organs (Female)
HA02D Circulatory System	HA12D Stomach	HA22D Reproductive Organs (Male)
HA03D Digestive System	HA13D Liver	HA23D Lungs with Heart & Larynx
HA04D Respiratory System	HA14D Kidney	HA24D Skull
HA05D Nervous System	HA15D Brain	HA25D Excretory System
HA06D Skeleton	HA16D Heart	HA26D Endocrine System Male
HA07D Head & Neck	HA17D Eye	HA27D Endocrine System Female
HA08D Skin	HA18D Ear	HA28D Muscular System Front View
HA09D Mouth	HA19D Male Pelvis	HA29D Muscular System Back View
HA10D Tongue	HA20D Female Pelvis	HA30D Nose

The models are manufactured under expert supervision.

PHOTOS OF GREAT PERSONALITIES

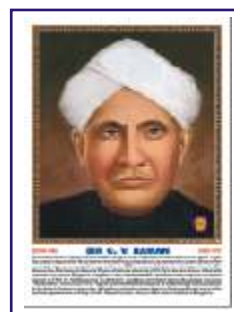
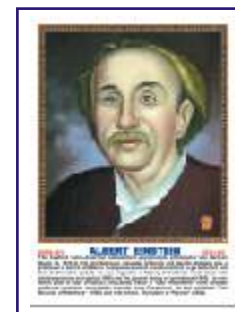
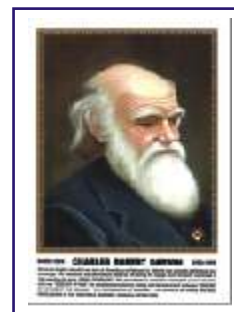
MATT CANVAS LAMINATED ON NUWOOD BOARD

GREAT SCIENTISTS

Size 31 × 43 cm Approx (GS01P - GS140P) Each Rs. 540.00
 Size 45 × 60 cm Approx (GS01PS - GS140PS) Each Rs. 1650.00

- GS01 Charles Robert Darwin (B)
- GS02 Gregor Mendel (B)
- GS03 Lamarck (B)
- GS04 Louis Pasteur (B)
- GS05 Dr. William Harvey (B)
- GS06 Leonardo-da-Vinci (B)
- GS07 Sir Joseph Lister (B)
- GS08 Anton Van leeuwenhoek (B)
- GS09 Carl Von Linnaeus (B)
- GS10 Edward Jenner (B)
- GS11 Sir James Young Simpson (B)
- GS12 Thomas Henry Huxley (B)
- GS13 Sir Edwin Ray Lankester (B)
- GS14 Sir Ronald Ross (B)
- GS15 Hugo De-vries (B)
- GS16 Sir Charles Bell (B)
- GS17 Alfred Russel Wallace (B)
- GS18 Sir J. C. Bose (B)
- GS19 Dr. Birbal Sahni (B)
- GS20 Sunder Lal Hora (B)
- GS21 Galileo Galilee (P)
- GS22 Sir Isaac Newton (P)
- GS23 Sir C. V. Raman (P)
- GS24 Dr. H. J. Bhabha (P)
- GS25 Archimedes (P)
- GS26 Albert Einstein (P)
- GS27 Thomas Alva Edison (P)
- GS28 Robert Boyle (P & C)
- GS29 Marie Curie (P & C)
- GS30 Michael Faraday (C)
- GS31 John Dalton (C)
- GS32 Dr. P. C. Ray (C)
- GS33 Dr. H. G. Khorana (B & C)
- GS34 Dr. S. S. Bhatnagar (C)
- GS35 S. Ramanujan (P & M)
- GS36 Antoine Laurent Lavoisier (C)
- GS37 William Ramsay (C)
- GS38 Humphry Davy (C)
- GS39 August Weismann (B)
- GS40 Joseph Priestley (C)
- GS41 Aristotle (B)
- GS42 Dmitri I. Mendeleef (C)
- GS43 Burbank Luther (B)
- GS44 S. N. Bose (P)
- GS45 M. N. Saha (P)
- GS46 K. S. Krishnan (P)
- GS47 K. N. Bahl (B)
- GS48 J. J. Thomson (P)
- GS49 Neils Bohr (P)
- GS50 Gilbert Newton Lewis (C)

- GS51 A. P. J. Abdul Kalam (P)
- GS52 Dr. Vikram Sarabhai (P)
- GS53 Aryabhata (P,A & M)
- GS54 Dr. S. S. Joshi (C)
- GS55 Sir Alexander Fleming (B)
- GS56 D. Mata Parshad (C)
- GS57 Benjamin Franklin (P)
- GS58 Ernest Rutherford (P & C)
- GS59 Dr. Raj Ramanna (P)
- GS60 Nicholas Copernicus (A & P)
- GS61 Alessandro Volta (P)
- GS62 Alfred Nobel (C)
- GS63 Anton Henry Bekuerel (P)
- GS64 Atovan Gerok (P)
- GS65 Benjamin Thomson (P)
- GS66 Crick (B)
- GS67 Watson (B)
- GS68 Edward Victor Aplaton (P)
- GS69 James Clark Maxwel (P)
- GS70 Jessek Luious Gelusale (P & C)
- GS71 Johns Kepeler (A & P)
- GS72 Kalpana Chawla (A & P)
- GS73 Max Planck (P)
- GS74 Panchanan Maheshwari (B)
- GS75 Varah Mihir (A, P & M)
- GS76 Sunita Williams (P)
- GS77 James Watt (P)
- GS78 Andre Marie Ampere (P & M)
- GS79 A. Graham Bell (P)
- GS80 Edwin Powell Hubble (A & P)
- GS81 Rakesh Sharma (A)
- GS82 M. S. Swaminathan (B)
- GS83 Robert Hooke (P, B & A)
- GS84 S. R. Ranganathan (M & Lib.)
- GS85 J. B. S. Haldane (B)
- GS86 Guglielmo Marconi (P)
- GS87 Wilbur Wright (P)
- GS88 Orville Wright (P)
- GS89 Neil Armstrong (P & A)
- GS90 Wihelm Roentgen (P)
- GS91 S. Chandrasekhar (P & A)
- GS92 Lord Kelvin (P & M)
- GS93 Charles Babbage (P & M)
- GS94 Friedrich Wohler (C)
- GS95 Frederick William Herschel (A)
- GS96 J. J. Berzelius (C)
- GS97 James Chadwich (P)
- GS98 Dr. Vijay P. Bhatkar (P)
- GS99 C. N. R. Rao (C)
- GS100 George Boole (M)



Photos size 31 × 43 cm

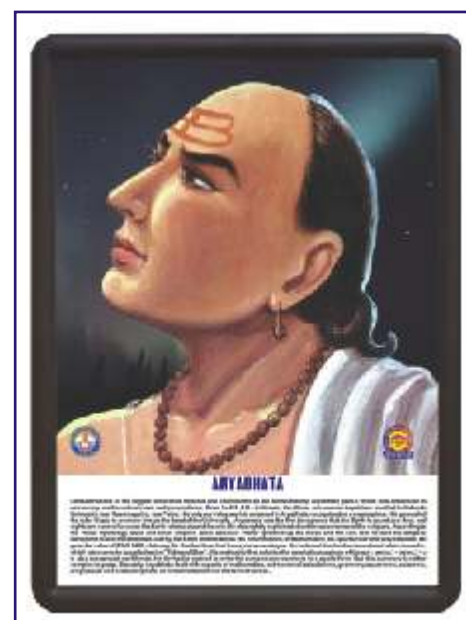


Photo size 45 × 60 cm

(A) Astronomer, (B) Biologist, (C) Chemist, (M) Mathematician, (P) Physicist

GREAT SCIENTISTS

Size 31 × 43 cm Approx (GS01P - GS140P) Each Rs. 540.00
 Size 45 × 60 cm Approx (GS01PS - GS140PS) Each Rs. 1650.00

- | | |
|---|--|
| GS101 Albert Abraham Michelson (P) | GS121 Venkatraman Ramakrishnan (C) |
| GS102 Stephen Hawking (P & A) | GS122 William Roxburgh (B) |
| GS103 Amedeo Avogadro (P) | GS123 Erwin Schrodinger (P) |
| GS104 Johannes Gutenberg (P) | GS124 Nikola Tesla (P) |
| GS105 Pierre Curie (P,C) | GS125 John Vincent Atanasoff (P) |
| GS106 Hans Christian Oersted (P & C) | GS126 Heinrich Hertz (P) |
| GS107 Henry Moseley (P) | GS127 Charles Francis Jenkins (P) |
| GS108 John Alexander Reina Newlands (C) | GS128 Jacobus Henricus Van'thoff (P & C) |
| GS109 Camillo Golgi (B) | GS129 Linus Carl Pauling (B & C) |
| GS110 Zacharias Janssen (P) | GS130 Friedrich Wilhelm Ostwald (C) |
| GS111 Georg Simon Ohm (P) | GS131 Svante August Arrhenius (C) |
| GS112 Johann Wolfgang Dobereiner (C) | GS132 Prof. S. R. Kashyap (B) |
| GS113 Thomas Hunt Morgan (B) | GS133 Frederick Sanger (C) |
| GS114 Christian Doppler (P & M) | GS134 Kary Banks Mullis (C) |
| GS115 Girolamo Cardano (P & M) | GS135 Michael Smith (C) |
| GS116 Robert Hanbury Brown (P) | GS136 G. N. Ramachandran (P) |
| GS117 Yellapragada Subbarow (B & C) | GS137 Alfonso Corti (B) |
| GS118 Prof. Yash Pal (P) | GS138 Ernst Mayr (B) |
| GS119 Josef Stefan (P & M) | GS139 Paul Ethralich (B) |
| GS120 Melvin Calvin (C) | GS140 Thomas Young (P) |

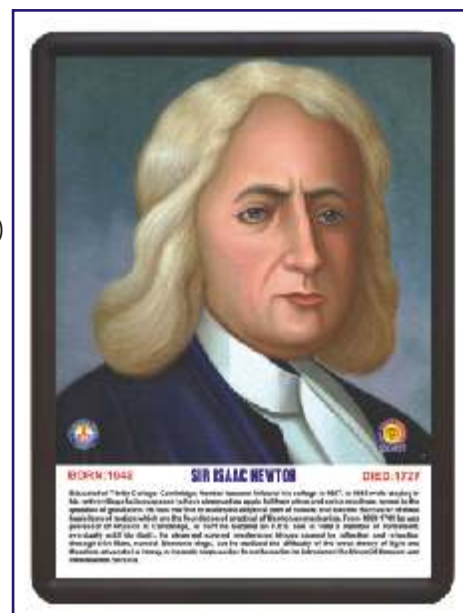


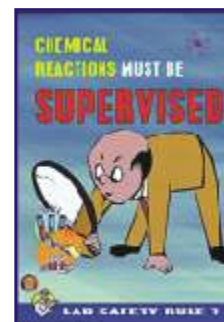
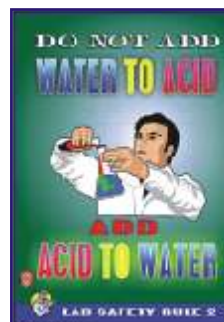
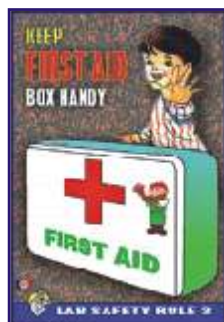
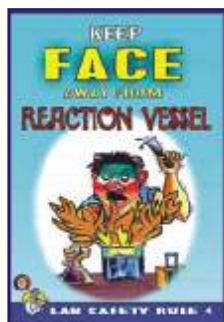
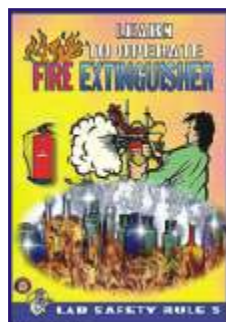
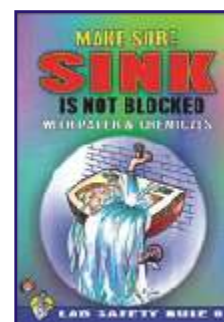
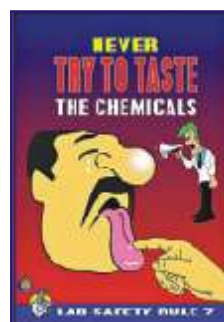
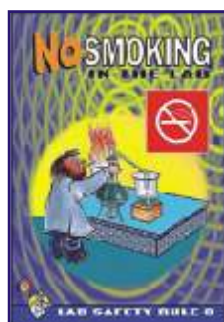
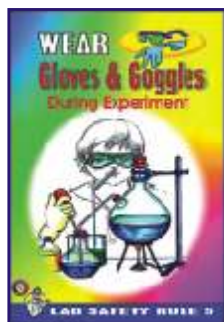
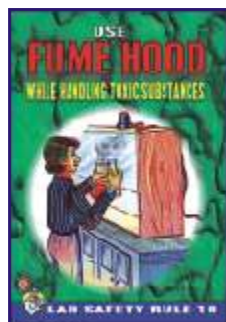
Photo size 45 × 60 cm

(A) Astronomer, (B) Biologist, (C) Chemist, (M) Mathematician, (P) Physicist

LAB SAFETY PHOTOS NEW

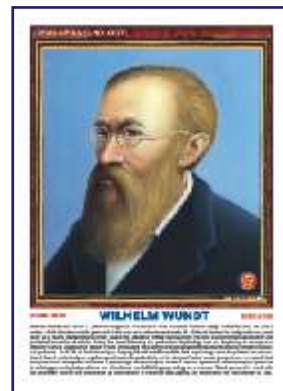
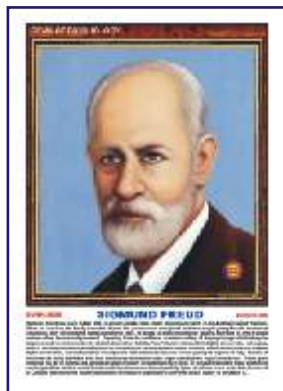
Size 31 × 43 cm Approx (LSP01P - LSP10P) Each Rs. 540.00

- | | |
|---|--|
| LSP01P Use fume hood while handling toxic substances | LSP06P Learn to operate fire extinguisher |
| LSP02P Wear gloves & goggles during experiment | LSP07P Keep face away from reaction vessel |
| LSP03P No smoking in the lab | LSP08P Keep first aid box handy |
| LSP04P Never try to taste the chemicals | LSP09P Do not add water to acid |
| LSP05P Make sure sink is not blocked with paper & chemicals | LSP10P Chemical reactions must be supervised |



GEMS OF PSYCHOLOGY

Size 31 × 43 cm Approx (GP01P - GP75P) Each Rs. 540.00
 Size 45 × 60 cm Approx (GP01PS - GP75PS) Each Rs. 1650.00



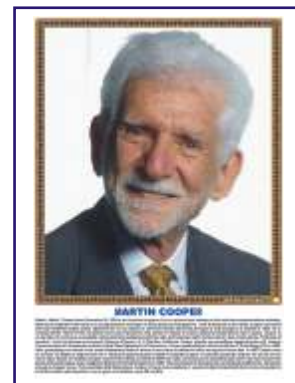
- | | | |
|--------------------------|----------------------------|-------------------------|
| GP01 Abraham H. Maslow | GP26 F. A. P. Aveling | GP51 Johannes P. Muller |
| GP02 Albert Bandura | GP27 F. J. Gall | GP52 John B. Watson |
| GP03 Alfred Adler | GP28 Francis Galton | GP53 John Dewey |
| GP04 Alfred Binet | GP29 Frederick Perls | GP54 John Locke |
| GP05 Aristotle | GP30 G. S. Hall | GP55 Joseph Wolpe |
| GP06 B. F. Skinner | GP31 George Kelly | GP56 Julian Rotter |
| GP07 C. L. Hull | GP32 Gordon Allport | GP57 K. S. Lashley |
| GP08 Carl G. Jung | GP33 Gottfried W. Leibnitz | GP58 Karen Horney |
| GP09 Carl R. Rogers | GP34 Gustav T. Fechner | GP59 Kurt Goldstein |
| GP10 Charles Bell | GP35 Hans J. Eysenck | GP60 Kurt Koffka |
| GP11 Charles Darwin | GP36 Harlow | GP61 Kurt Lewin |
| GP12 Charles Sherrington | GP37 Heinz Kohut | GP62 Max Wertheimer |
| GP13 D.O. Hebb | GP38 Henry Murray | GP63 Melanie Klein |
| GP14 David Hume | GP39 Herbert Spencer | GP64 Neil E. Miller |
| GP15 David Wechsler | GP40 Herman Rorschach | GP65 Raymond B. Cattell |
| GP16 Dr. Cyril Burt | GP41 Herman V Helmholtz | GP66 Rene Descartes |
| GP17 E. B. Titchner | GP42 Hermann Ebbinghaus | GP67 Rollo Reese May |
| GP18 E. C. Toleman | GP43 Herry S. Sullivan | GP68 Sigmund Freud |
| GP19 E. H. Weber | GP44 Immanuel Kant | GP69 Thomas Hobbes |
| GP20 Edward L. Thorndike | GP45 Ivan P. Pavlov | GP70 Walter Mischel |
| GP21 Edwin Guthrie | GP46 J. M. Baldwin | GP71 Wilhelm Wundt |
| GP22 Emil Kraepelin | GP47 J. M. Cattell | GP72 William James |
| GP23 Erich Fromm | GP48 J. W. Cannon | GP73 William Mc-Dougall |
| GP24 Erik Erikson | GP49 Jean Piaget | GP74 William Sheldon |
| GP25 Ernest Jones | GP50 Johann F. Herbart | GP75 Wolfgang Kohler |

FAMOUS PERSONALITIES IN COMPUTER SCIENCE



Size 31 × 43 cm Approx (FCS01P - FCS12P) Each Rs. 540.00
 Size 45 × 60 cm Approx (FCS01PS - FCS12PS) Each Rs. 1650.00

- | | |
|---------------------------|-----------------------|
| FCS01 Alan Turing | FCS07 Martin Cooper |
| FCS02 Charles Babbage | FCS08 Satya N Nadella |
| FCS03 Dr. Vijay P Bhatkar | FCS09 Shiv Nadar |
| FCS04 George Boole | FCS10 Steve Jobs |
| FCS05 Lady Lovelace | FCS11 Sundar Pichai |
| FCS06 Mark Zuckerberg | FCS12 Tim Berners Lee |



HEALTH, HYGIENE & SANITATION

On a persistent demand from various Educational Institutions, NGO's, Rural Development Offices, Nursing Institutions we have recently published naturally coloured, useful and authentic charts incorporating all the modern researches and innovations on the subject. The charts are divided into two main topics as below :

HEALTH CARE SERIES

containing 10 Charts English & Hindi combined
Size 50x75 cm.

- HC01 * Health Rules
- HC02 * Causes of Diseases
- HC03 * Prevention of Diseases
- HC04 * Effects of Alcohol
- HC05 * Tobacco & Habit Forming Drugs
- HC06 * Clean Body
- HC07 * Clean Water
- HC08 * Constituents of Food
- HC09 * Malnutrition
- HC10 Immunization

Laminated Each Rs. 130.00

* Also Available In

English - Kannada

English - Tamil

English - Malayalam

English - Telugu

Each Rs. 130.00



PREVENT THE DISEASES

containing 24 Charts English & Hindi combined

Each chart depicts the Causes, Symptoms, Treatments, care to be taken.
Size 50x75 cm.

- | | |
|---------------------|---------------------------------------|
| PD01 * Cholera | PD13 * Dysentery |
| PD02 * Malaria | PD14 Hepatitis |
| PD03 * AIDS | PD15 Heart Attack |
| PD04 Plague | PD16 Diabetes |
| PD05 Tuberculosis | PD17 Asthma |
| PD06 Leprosy | PD18 Arthritis |
| PD07 Influenza | PD19 Thyroid |
| PD08 Jaundice | PD20 Blood Pressure |
| PD09 Cancer | PD21 Dengue NEW |
| PD10 * Typhoid | PD22 Measles NEW |
| PD11 Viral Diseases | PD23 Food Poisoning NEW |
| PD12 Chicken Pox | PD24 Poliomyelitis (Polio) NEW |

Laminated Each Rs. 130.00

* Also Available In

English - Kannada

English - Malayalam

English - Tamil

English - Telugu

Each Rs. 130.00



DETAILED HUMAN PHYSIOLOGY CHARTS

Printed in original colours. Everything requisite for thorough understanding of Human Physiology in its broad out line included. Each size 70 × 100 cm.

Laminated

The Skeleton*#	HPM01
Human Muscles*#	HPM02
Blood Circulation*#	HPM03
Nervous System*#	HPM04
Digestive System*#	HPM05
Eye*#	HPM06
Ear*#	HPM07
Kidney, Skin & Excretory Organs*#	HPM08
The Respiratory System*#	HPM09
Human Heart*#	HPM10

All above price Rs. 200.00 each

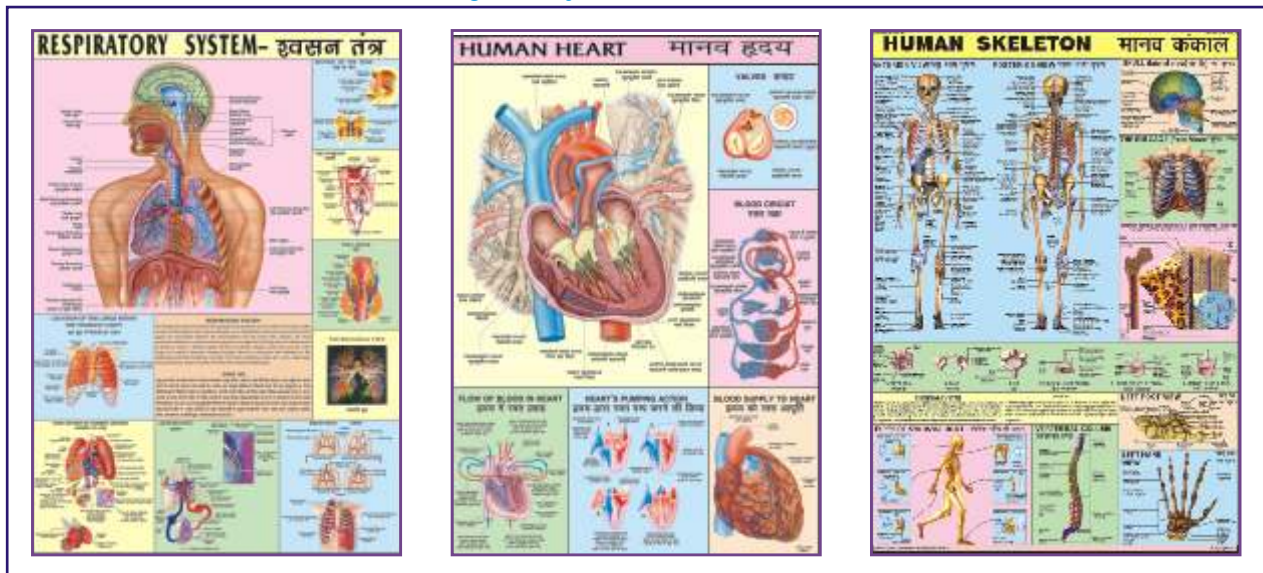
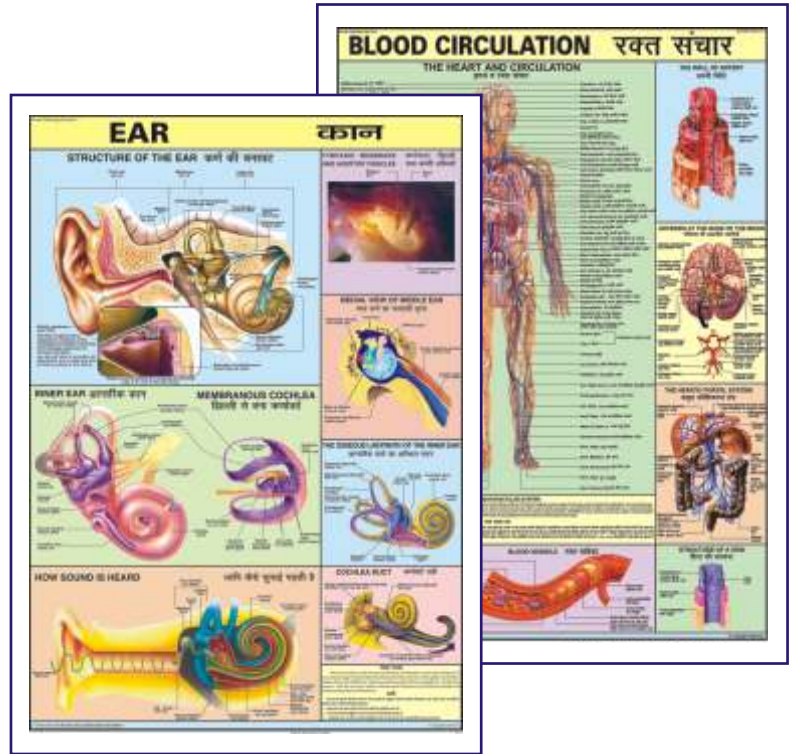
Endocrine System	HPM11
Reproductive (Male)#	HPM12
Reproductive (Female)#	HPM13
Human Embryology	HPM14
Lymphatic System	HPM15
English-Hindi combined	Each Rs. 200.00
English Only (Add E to the code)	Each Rs. 200.00
HPM16E Human Brain Eng Only	Each Rs. 210.00
HPM17E Human Teeth Eng Only	Each Rs. 210.00

Available in following languages also

- *English-Kannada(KN) *English-Malayalam(ML)
- #English-Tamil(TM) #English-Telugu(TG)

Price Rs. 210.00 each

For English only. Add E to the above code



ELEMENTARY HUMAN PHYSIOLOGY

HPS01 to HPS11 Elementary Human Physiology Size 50 × 75 cms Laminated Each chart Rs. 130.00

Available in English-Hindi only

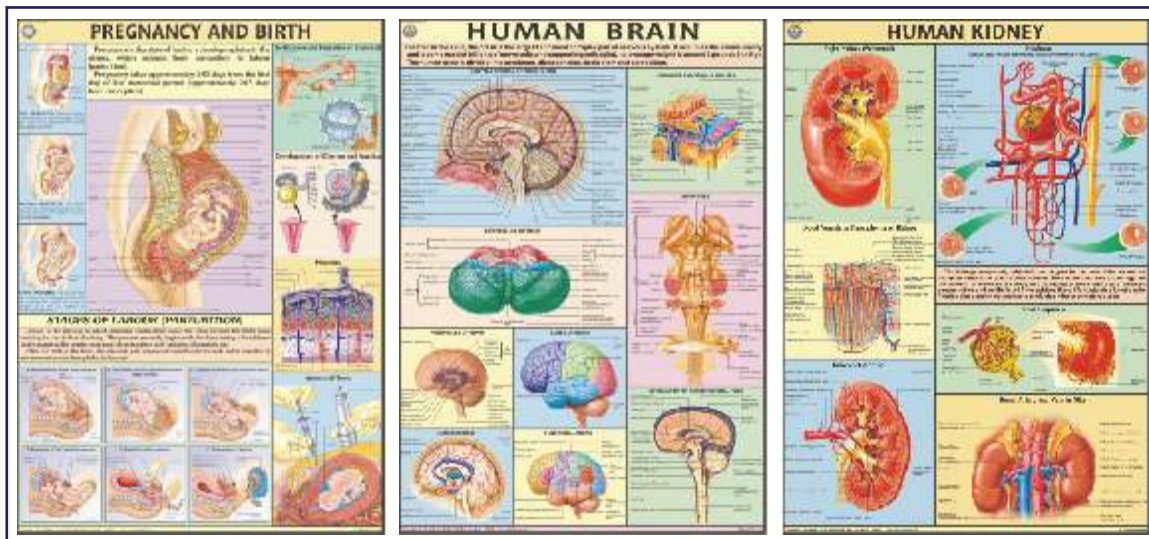
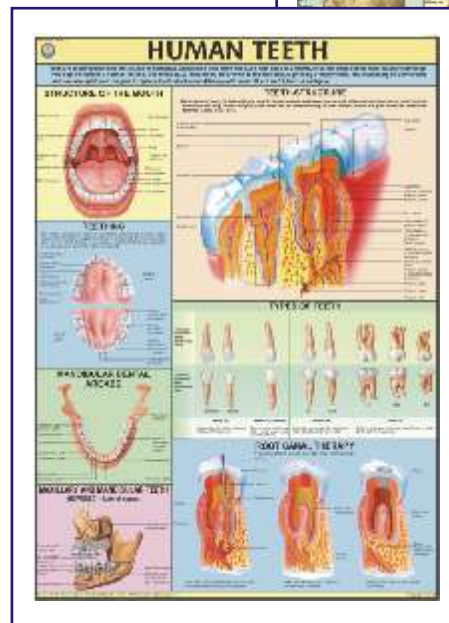
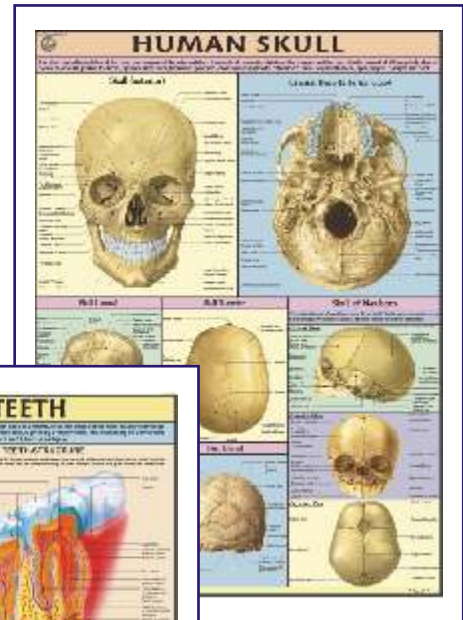
For details please see the first 11 charts given above.

DETAILED HUMAN PHYSIOLOGY CHARTS

Printed on Synthetic in original colours . Everything requisite for thorough understanding of Human Physiology in its broad out line included. Each size 70 × 100 cms. Available in English only. Price Each chart Rs. 275.00

- The SkeletonHP01S
- Muscles.....HP02S
- Blood CirculationHP03S
- Nervous SystemHP04S
- Digestive System.....HP05S
- EyeHP06S
- EarHP07S
- Kidney, Skin & Excretory OrgansHP08S
- The Respiratory SystemHP09S
- Human HeartHP10S
- Endocrine SystemHP11S
- Reproductive (Male).....HP12S
- Reproductive (Female)HP13S
- Human EmbryologyHP14S
- Lymphatic SystemHP15S
- Human Brain.....HP16S
- Human TeethHP17S
- Pregnancy & Birth.....HP18S
- Human KidneyHP19S
- Urinary TractHP20S
- Human Skull.....HP21S
- Ear, Nose, ThroatHP22S
- Liver, Gall bladder & PancreasHP23S
- Human LungsHP24S
- Joints of the BodyHP25S
- Immune SystemHP26S
- Human SkinHP27S
- Movable Joints (Synovial)HP28S
- Human Spinal Cord.....HP29S
- Menstrual CycleHP30S
- Contraception (Birth Control).....HP31S
- Vertebral ColumnHP32S

NEW



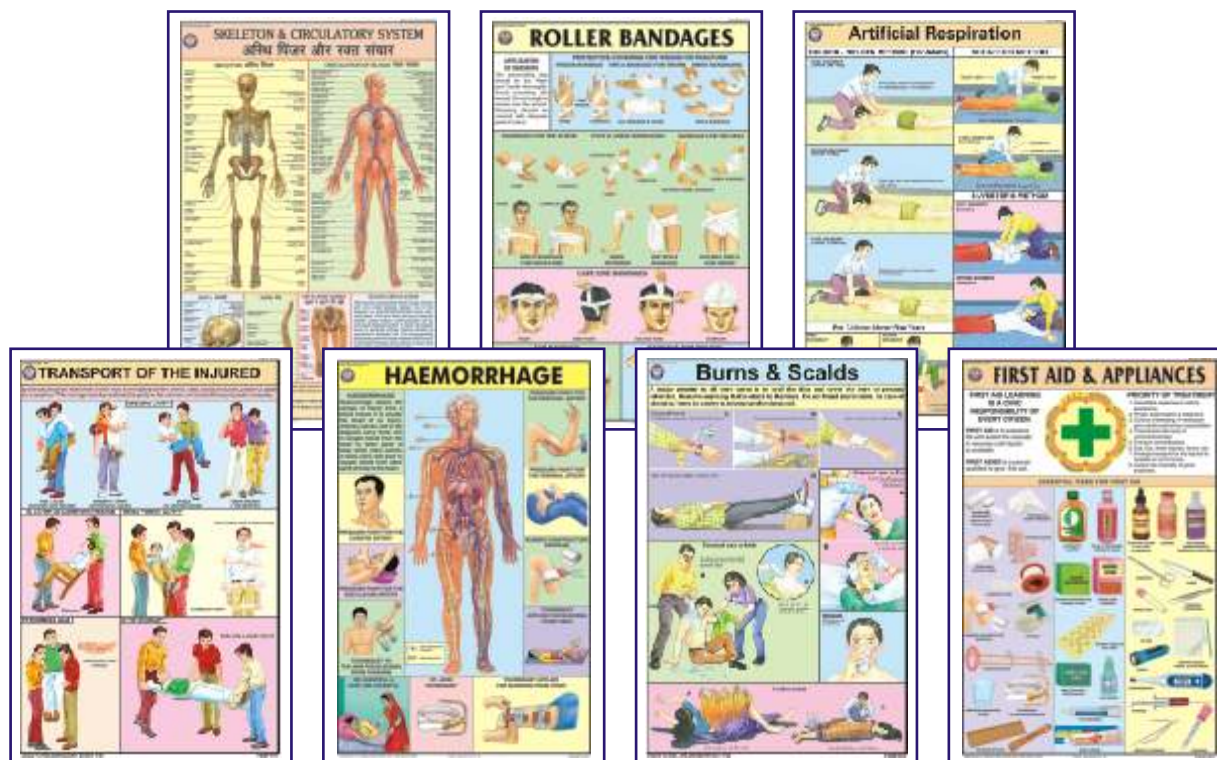
FIRST AID CHARTS

Each Chart size 50 × 75 cm - English and Hindi combined, Laminated

- FA01 **Skeleton & Circulatory System** : Gives the basic knowledge of human body.
- FA02 **Triangular Bandages** : Slings, knots and bandages for various parts of body.
- FA03 **Roller Bandages** : A protective covering for wound or fracture, methods of bandaging.
- FA04 **Fractures** : Simple & compound fractures, treatment of fracture in parts of body.
- FA05 **Artificial Respiration** : Showing Schafer's method, Silvestor's method & Holger Nielsen's method of artificial respiration. Outline of Respiratory system and what is suffocation.
- FA06 **Transport of the injured** : How to carry an injured person so that minimum movement of the injured portion is assured.
- FA07 **Unconsciousness** : Sun Stroke, fainting, epileptic fit, Infantile convulsions, drowning.
- FA08 **Haemorrhage** : Location of main arteries in the body and pressure points where when pressed, bleeding can be controlled.
- FA09 **Electric Shock Treatment** : How to remove live wires, treatment & whom to contact.
- FA10 **Emergency Resuscitation** : Mouth to mouth and Mouth to nose method. How to give external cardiac chest compression.
- FA11 **Removal of foreign bodies from eye, ear, nose** : Various precautionary methods to remove the foreign bodies and to ensure safety of organs.
- FA12 **Burns & Scalds** : Type of burns, treatment of chemical burns, clothing on fire.
- FA13 **Snakes & Their Bites** : Type of snakes, Identification of snakes on the basis of appearance, treatment of snake bite.
- FA14 **Poisons and their Antidotes** : Types of poisons, their symptoms & their treatment.
- FA15 **First Aid & Appliances** : What is First Aid, Qualities of a First Aider and essential appliances to give first aid.

Each Rs. 130.00

All the above Charts are available in English only also. Add E to the above code



Some Special Charts

- CD05 Life saving first aid instruction size 70x100 cm
- STG21 Fire & Fire Extinguishers size 58 x 90 cm

Rs. 210.00
Rs. 225.00

COLOURED CHARTS ON YOGA

Each Chart size 50 x 75 cms - Hindi & English combined, Laminated
Price Each chart Rs. 130.00

A faithful study and following the instructions as laid down in these charts, a vast treasure of super powers can be explored and developed within ourselves. For all round Physical, Mental, Emotional, Intellectual & Spiritual development of mind and body.

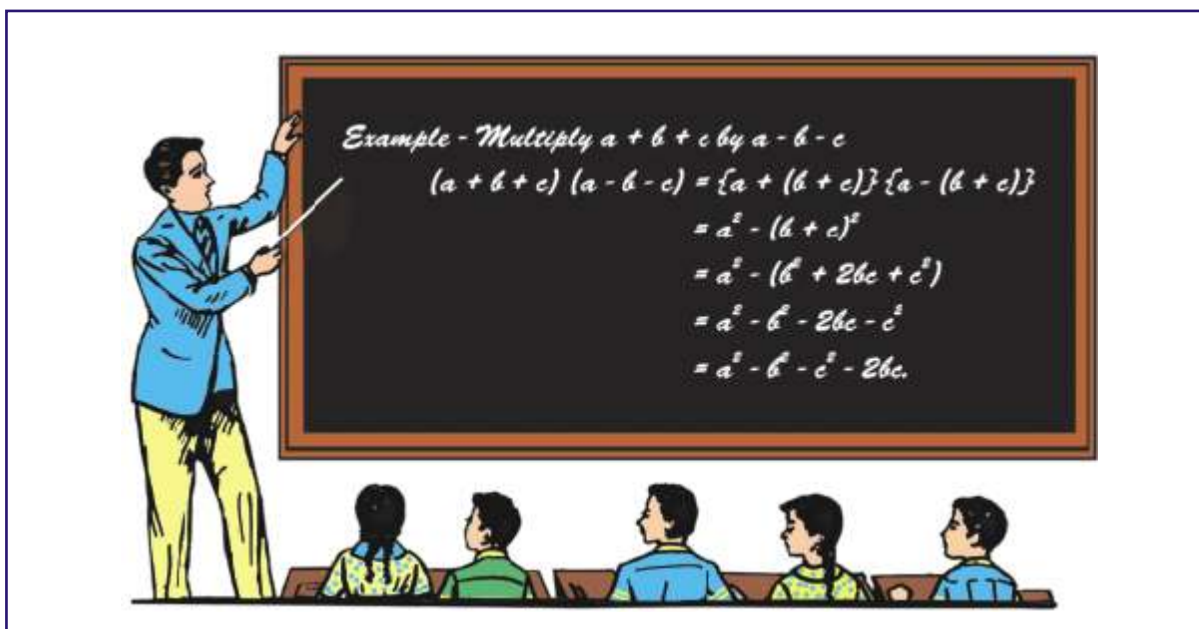
- YO01 1. **Shuddhi Kriyas-Shat Karmas** : Kunjal-Vaman Dhauti, Kapal Bhati, Ghriti Neti, Sutra Neti, Jal Neti, Vastra Neti, Dand Dhauti, Nauli Karma, Tratak, Basti etc.
- YO02 2. **Shankh Prakshalan** : Kagasan, Tadasan, Triyak Tadasan, Triyak Bhujangasan, Kati Chakrasan, Udarakarashanasan, Shavasan.
- YO03 3. **Surya Namaskar** : A series of twelve steps, a complete exercise of all the parts of body. It makes the body strong, beautiful & active.
- YO04 4. **Yog Mudras, Padmasan & Matsyasan** : These remove Spinal & Cervical pain, Asthma, Diabetes, Mental weakness, Gastric troubles, Knee pain, Eye Defects.
- YO05 5. **Paschimottanasan & Ardh Matsyendrasan** : Spine becomes flexible and Elastic, the Abdominal organs- Digestive system, Nervous system are toned up.
- YO06 6. **Vajrasan, Ustrasan & Supt Vajrasan** : These remove cervical and slipdisc defects diseases of chest, lungs, heart, abdomen, kidney etc. , excess fatness of Abdomen and back
- YO07 7. **Bhujangasan, Shalbhasan, Dhanurasan & Mayurasan** : Abdominal Organs are toned up. Spine is strengthened. Remove Gastic Intestinal disorders etc. Mental Powers are developed.
- YO08 8. **Pawan Muktasan & Chakrasan** : Keep Spine Young & Flexible. Improve Eye sight, Hearing, Smell Taste & Circulation of Blood to the brain.
- YO09 9. **Sarvangasan & Halasan** : Reduce fat, make arms, legs, Blood circulation, Digestive system, Liver strong and maintains youthful look etc.
- YO10 10. **Bandhas & Pranayams** : Mool Bandh, Jalandhar Bandh, Uddiyan Bandh, Mahabandh. Pranayam Mudra, Lomvilom Pranayam, Nadishodan Pranayam, Agnisar Kriya.
- YO11 11. **Spine & Related Organs** : Composition of spine, Positions of Psychic centres and Endocrine Glands are shown.
- YO12 12. **Healthy Eye** : Eye washing, tratak on rising sun, Eye exercises, Palming.

All the above Charts are available in English only also. Add E to the above code



Charts are laminated and fitted with plastic rollers.

LAMINATED BLACK OR GREEN BOARDS



ENTIRELY A NEW CONCEPT IN LAMINATION

These replace glass blackboards. Most durable and smooth & hard surface. These are unbreakable. Complete with metal frame and hooks for hanging. Please indicate the shade preferred (Black or Green).

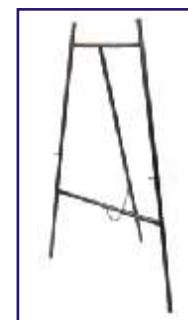
Size in cm	Size in inches	Item code	Price with regular frame	Item code	Price with heavy angle
80 × 60 cm	32" × 24"	GB01RF or BB01RF	Rs. 2363.00	GB01HF or BB01HF	Rs. 2588.00
120 × 80 cm	48" × 32"	GB02RF or BB02RF	Rs. 4200.00	GB02HF or BB02HF	Rs. 4650.00
160 × 120 cm	64" × 48"	GB03RF or BB03RF	Rs. 9150.00	GB03HF or BB03HF	Rs. 9900.00
240 × 120 cm	96" × 48"	GB04RF or BB04RF	Rs. 11475.00	GB04HF or BB04HF	Rs. 12450.00

BLACK BOARD INSTRUMENTS

DS03 MAP POINTER wooden one Meter long	each Rs. 90.00	DS12 Chalk coloured Box of 50	each Rs. 30.00
MAP POINTER Telescopic made of Brass nickelled		Black Board Geometrical Instruments Box : containing pair of set squares, protractor, compass, divider, scale & duster. made of plastic	
DS04 60 cm Pen Type	Rs. 143.00	DI01 Good Quality Plastic	each Rs. 563.00
DS05 90 cm	Rs. 240.00	DI02 Extra Superior Quality Plastic	each Rs. 825.00
DS06 120 cm	Rs. 285.00	DI03 Superior Quality Wooden	each Rs. 1163.00
DS07 Chalk Holder	each Rs. 210.00	DI04W Compass Wooden	each Rs. 225.00
DS09 Black Board Duster wooden superior	each Rs. 45.00	DI04P Compass Plastic	each Rs. 120.00
DS10 Deluxe quality made of plastic	each Rs. 20.00		
DS11 Chalk white Box of 50	each Rs. 18.00		

STANDS FOR THE DISPLAY BOARDS

DS51 Black Board Stand Small	For Boards upto 90 × 60 cm	each Rs. 1088.00
DS52 Black Board Stand Medium	For Boards upto 120 × 90 cm as illustrated	each Rs. 1388.00
DS53 Black Board Stand Large	For Boards upto 160 × 120 cm	each Rs. 2400.00
DS54 Accessories Tray for Boards		Rs. 225.00
DS55 Powder Coated Collapsible Easel		Rs. 2250.00
DS56 Nickelled Heavy base stand for boards smaller than 90x60 cm		each Rs. 3000.00
DS57 Nickelled Heavy base stand for boards 90x60 cm or larger a pair will be required		Per pair Rs. 6000.00



KANSIL'S WHITE BOARDS

A versatile presentation aid. It dispenses away the use of chalk on the black board. This is infact the cleanest method used in conference rooms and lecture rooms. These are framed with aluminium angle and large size boards can conveniently be used as projection screen for OHP and slide projectors. The instructor can write with a specially designed marker pens available in 4 beautiful colours and the writing can be wiped off with an ordinary cloth. The size and the rates are as below:-

Size in cm	Size in inches	With Regular Frame	With Heavy Frame
60 × 30	24" × 12"	WB01RF Rs. 915.00	WB01HF Rs. 1035.00
60 × 45	24" × 18"	WB02RF Rs. 1260.00	WB02HF Rs. 1395.00
90 × 60	36" × 24"	WB03RF Rs. 2250.00	WB03HF Rs. 2520.00
120 × 60	48" × 24"	WB04RF Rs. 3135.00	WB04HF Rs. 3488.00
120 × 90	48" × 36"	WB05RF Rs. 4500.00	WB05HF Rs. 4875.00
150 × 90	60" × 36"	WB06RF Rs. 6825.00	WB06HF Rs. 7650.00
150 × 120	60" × 48"	WB07RF Rs. 6900.00	WB07HF Rs. 7800.00
180 × 120	72" × 48"	WB08RF Rs. 8625.00	WB08HF Rs. 9450.00
240 × 120	96" × 48"	WB09RF Rs. 11475.00	WB09HF Rs. 12450.00



WBM Marker Pen - Red, Blue, Black, Green set of 4Set Rs. 210.00
 WB21 Duster for White Board Superioreach Rs. 53.00

KANSIL'S NOTICE BOARDS

A versatile system of displaying typed or handwritten notices with the help of drawing pins. The system is oriental but with a very modern and elegant look covered with Blazer Cloth and framed with aluminium angle. Available colours are green, blue or maroon. It is available in following convenient sizes :

Size in cm	Size in inches	With Regular Frame	With Heavy Frame
80 × 60	32" × 24"	NB01RF Rs. 2550.00	NB01HF Rs. 2925.00
120 × 80	48" × 32"	NB02RF Rs. 4388.00	NB02HF Rs. 4950.00
160 × 120	64" × 48"	NB03RF Rs. 7650.00	NB03HF Rs. 8325.00
240 × 120	96" × 48"	NB04RF Rs. 10650.00	NB04HF Rs. 11850.00



GOLDSIGN™ VELVET DISPLAY BOARDS

Size (in cm) (HxW)	Price per Board	Size (in cm) (HxW)	Price per Board
GSB01 30×15 cm	Rs. 960.00	GSB06 91×61 cm	Rs. 5100.00
GSB02 45×30 cm	Rs. 1860.00	GSB07 122×61 cm	Rs. 6600.00
GSB03 61×45 cm	Rs. 2970.00	GSB08 122×91 cm	Rs. 8850.00
GSB04 61×61 cm	Rs. 3525.00		



GSB26 Letters/Figures size 12mm (1/2") Rs. 4.00 each
 GSB27 Letters/Figures size 25mm (1") Rs. 6.00 each
 GSB28 Letters/Figures size 37mm (1 1/2") Rs. 9.00 each

MAP STANDS



MAP STORAGE STAND

DS101 As illustrated for keeping 24 maps made of iron painted.

Rs. 2700.00

DS102 For keeping 36 maps made of iron painted.

Rs. 3300.00

MAP DISPLAY STAND

DS103 The map hangs on the stand nearest to the students; it is easy for the teacher also to emphasise on a point. All folding sturdily built of iron pipes. Height Adustable. Very convenient to carry from one class to another. Painted.

Each Rs. 2100.00

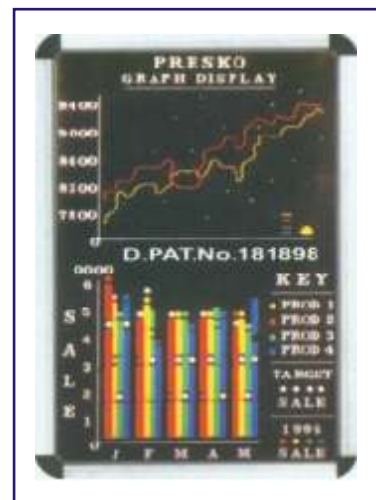


PRESKOGRAPH AIDS & INTERCHANGEABLE BOARDS

It is a unique and effective system of interchangeable letters & figures and graph symbols with which any kind of information can be displayed in an elegant way by joint pressing the letters and figures and graph symbols in the closed perforated back ground. The same can be changed at your will.

It is ideal for instantaneous layout planning & the first hand Knowledge of coming events. These are must for institutions & offices.

Size of Panel with Frame		Total No. of Letters & Figures in each set	Price with frame			
in cm	in inches		with letters		without letters	
45x30	18 × 12	250	PB02WL	1688.00	PB02	1163.00
61x30	24 × 12	305	PB03WL	1973.00	PB03	1350.00
61x45	24 × 18	410	PB04WL	2738.00	PB04	1913.00
91x61	36 × 24	750	PB05WL	5625.00	PB05	3885.00
122x61	48 × 24	950	PB07WL	6825.00	PB07	4650.00
122x91	48 × 36	1050	PB08WL	8550.00	PB08	6150.00
122x122	48 × 48	1150	PB09WL	10650.00	PB09	7950.00
152x122	60 × 48	1350	PB12WL	13500.00	PB12	10350.00
183x122	72 × 48	1350	PB15WL	15600.00	PB15	12450.00
244x122	96 × 48	1750	PB16WL	20625.00	PB16	16500.00



Extra letters and figures can also be had

PB26 ½" size	per 100	Rs. 203.00	PB33 Roman Type 1 ½"	per 100	Rs. 420.00
PB27 ¾" size	per 100	Rs. 225.00	PB34 Comma/ Full stop	per 100	Rs. 173.00
PB28 1" size	per 100	Rs. 248.00	PB38 Line Divider 6" long	Per 100	Rs. 525.00
PB29 1 ½" size	per 100	Rs. 345.00	PB40 Direction Pointer	Per 100	Rs. 2100.00
PB30 2" size	per 100	Rs. 600.00	PB41 Sleek Pointers	Per 100	Rs. 225.00
PB31 Roman Type ¾" Size	per 100	Rs. 248.00	PB42 Nail Timble(Plucker)	Per 100	Rs. 1388.00
PB32 Roman Type 1" size	per 100	Rs. 315.00			

ILLUMINATING GLOBES

Manufactured by Replogle Globes, USA,
World's largest globe manufacturing company

Political-cum-Physical Globe

Available in 2 sizes: 30 cm dia and 25 cm dia. Fitted on a moulded, black coloured base & smoked semi-meridian.

Salient Features:

- Illuminated.
- More than 4000 locations.
- Time dial at the North Pole.
- Two sizes:
- Unlit position shows Physical features.
- Lit position shows Political features.
- Certified by Survey of India.

Item Code IG01 Copenhagen Blue Globe 30 cm dia

Price Rs. 6000.00

Item Code IG02 Sweden Blue Globe 25 cm dia

Price Rs. 4500.00



BONES & SKELETON MODELS



XC-101

Human Skeleton

- Price Rs. 23385.00
- Size: 170 cm life size.
- Made of PVC plastic.
- Removable arms and legs.
- Features nerve branches, vertebral artery and herniated lumbar disc.
- Skull includes movable jaw, cut calvarium, suture lines and three removable lower teeth.
- Mounted on a sturdy 40cm wide base.
- Washable & Unbreakable
- Ideal for teaching the basics of human anatomy.



XC-101A

XC-101A Human Skeleton With Muscles & Ligaments

- Price Rs. 41700.00
- Life size 170 cm
- With muscles & ligaments
- On pelvic mounted stand with 40cm wide base.
- The skeleton allows you to demonstrate the hand painted muscles origins & flexible joints ligaments.
- This skeleton is made of durable plastic.
- Skull includes movable jaw, cut calvarium, suture lines and three removable lower teeth.
- Washable & Unbreakable
- Ideal for teaching the basics of human anatomy.



SK046

SK046

Mini Skeleton

- Price Rs. 2325.00
- Real life Model
- Detachable joints & Durable Parts
- ABS Stand
- Size: 46 cm(18")

XC-102B

Human Skeleton

- Price Rs. 8175.00
- Size 85cm Medium.
- Made of PVC plastic.
- Shows nerves and blood vessels.
- Depicts the position, course & distribution of main arteries & peripheral nerves
- Can be employed as a visual aid in the instruction of anatomy to students of medicine.



XC-102B

XC-105C

Didactic Flexible Vertebral Column with Pelvis

- Price Rs. 9510.00
- This model has a fully flexible spine throughout and features different sections of the spinal column in different color: cervical vertebrae, thoracic vertebrae, lumbar vertebrae, sacrum and the coccyx.



XC-105C

XC-126

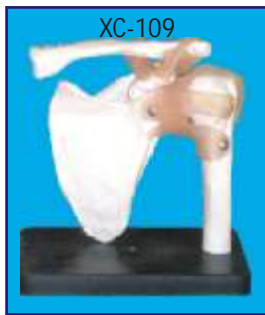
Vertebral with Pelvis & Femur Heads

- Price Rs. 8985.00
- Life size model
- Shows all significant features of each vertebra, including spinal cord, nerve roots, the vertebral artery, a herniated disc and vertebral notch etc.
- Special features : inflexible 72 cm tall vertebral column complete with pelvis, femur heads, sacrum, occipital bone, vertebral artery, all nerve branches and herniated lumbar disc.
- Deluxe chrome stands 85 cm high.



XC-126

ANATOMICAL MODELS



XC-109 Shoulder Joint

- Price Rs. 2085.00
- Size: 16 × 12.5 × 20cm. Life size.
- Ball and socket joint.
- To illustrate abduction, adduction, anteversion, retroversion & internal/external rotation.
- Includes flexible artificial ligaments.



XC-110 Hip Joint

- Price Rs. 2085.00
- Life size, on stand.
- Ball and socket joint
- Demonstrates anteversion, retroversion, abduction & internal/external rotation. Includes flexible, artificial ligaments.

XC-111 Knee Joint

- Price Rs. 2085.00
- Size: 12.5 × 12.5 × 32cm.
- Hinge joint, Synovial joint
- Life size, on stand.
- Demonstrates flexion, extension, and internal/external rotation. Includes flexible, artificial ligaments.



XC-112 Elbow Joint

- Price Rs. 2085.00
- Size: 12.5 × 12.5 × 32cm.
- Hinge joint, Pivot joint
- Life size, on stand
- Demonstrates flexion, extension, and internal/external rotation of the radius.
- Includes flexible, artificial ligaments.



XC-113 Foot Joint

- Price Rs. 2085.00
- The model is made of PVC.
- Hinge joint.
- Gliding joint.
- Natural Size.



XC-114 Hand Joint

- Price Rs. 2085.00
- The model is made of PVC plastic.
- Hinge joint.
- Saddle joint.
- Condyloid joint
- Natural size.

XC-113A

Life-Size Foot Joint with Ligaments

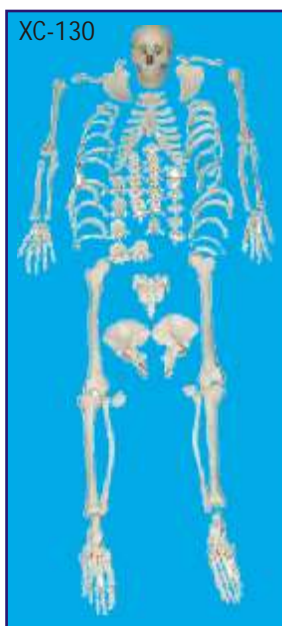
- Price Rs. 2385.00
- Demonstrate all of foot functionality and the external anatomical structures. Including flexible, artificial ligaments.
- Made of PVC plastic.
- Natural size.



XC-114A

Life-Size Hand Joint with Ligaments

- Price Rs. 2385.00
- Demonstrate all of hand functionality and the external anatomical structures.
- Including flexible, artificial ligaments. Made of PVC plastic. Natural size.



XC-130

Disarticulated Skeleton

- Price Rs. 16350.00
- This economical life size disarticulated skeleton will encourage students to learn the various bones of an Adult Human. It is a visual aid for instructions of anatomy to students, doctors, nurses or anyone interested in human skeleton.
- About 200 different bones.

ZX-1601 Bone Microstructure

- Price Rs. 6750.00

- Made of HSP resin having long durability.
- Size: 30x20x16cm.
- Total 19 positions are shown.
- 3-D section of a lamellar bone.
- Model shown various planes in cross and longitudinal section.
- The model helps to understand the typical elements of a lamellar bone along with the Volkmann and Haversian system, spongy and compact parts, endosteum, cortical substance and osteocytes.

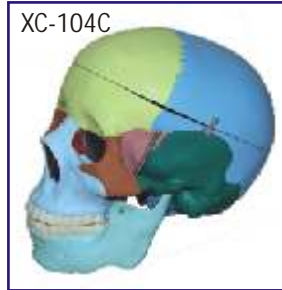




XC-104

Life Size Skull

- Price Rs. 3135.00
- This economical life-size adult plastic skull features a moveable jaw, cut calvarium, suture lines and 3 removable lower teeth-incisor, cuspid and molar.
- Dissectible into 3 parts.



XC-104C

Life Size Coloured Skull

- Price Rs. 4485.00
- This is advanced model of XC-104 life-size skull, bones painted in different colors for precise study. Can be disassembled into 3 parts.



XC-104E

Skull Model with 8 Parts Brain

- Price Rs. 7110.00
- This Model is based on XC-104, includes 8 parts brain: frontal & parietal lobe, temporal & occipital lobe, encephalic trunk & cerebellum.



ZX-1201

ZX-1201 Human Fetal Skull

- Price Rs. 2385.00
- Made of HSP resin having long durability.
- Natural size. Movable lower jaw.
- Total 41 parts labeled.
- Beautifully painted in colours.
- Showing incomplete ossification of skull bones, fontanelles, frontal and parietal eminences, various skull bones like occipital, temporal, sphenoid, frontal, mandible and maxilla.



ZX-1202

ZX-1202

Human Skull Model Dx.

- Price Rs. 5235.00
- Made of HSP resin having long durability.
- Size: Natural size.
- Dissectible into 3 parts with moveable jaw, cut calvarium.
- Well illustrated and informative.
- Model is accurately made from actual specimen references, photographs and encyclopedia reference under expert guidance.
- Model is a great teaching tool for anatomy lessons.



XC-123

Adult Male Pelvis

- Price Rs. 3030.00

These model sizes are just the same as realities and made of PVC plastic. Comparing a model of male pelvis with a female one, the differences between the two can be listed as following:

	Male	Female
• Pelvis shapes	Long and narrow	Short and broad
• Pelvis cava	Like a funnel	Like a barrel
• Aperture pelvis Superior	Heart-like	Rounded
• Sacrum	Long and narrow	Broad and short
• Angles of pelvis arch	70-75 degree	90-100 degree
• Symphysis pubica	Long and narrow	Short and broad



XC-124

Adult Female Pelvis

- Price Rs. 3030.00



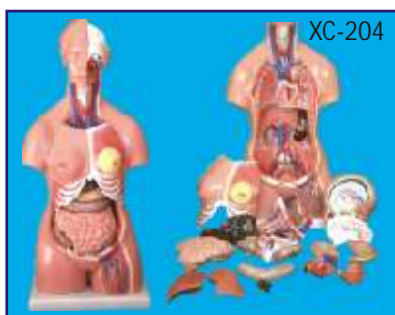
XC-125

XC-125

Female Pelvic Muscles & Organs

- Price Rs. 4290.00
- Natural size.
- Made of PVC plastic.

HUMAN TORSO MODELS



XC-204 Unisex Torso 23 parts 85CM

- Price Rs. 22935.00
- Size: 33.5" tall (85cm), Made of PVC plastic.
- Features an exposed spine with removable vertebra and spinal cord segments.
- Interchangeable male and female genitalia.
- The female organs include a fetus in the womb.
- Dissectible into 23 parts: torso, female breast plate, head, eyeball, brain, vertebra spinal nerves, lung (2 parts), heart (2 parts), liver, kidney, stomach (2 parts), intestines (4 parts), male genitalia (2 parts), female genitalia with fetus (3 parts).
- Mounted on a plastic base.



NEW

ZX-1100E Human Torso Small (23 parts)

- Price Rs. 4800.00
- Size: 46 x 24 x 12.5 cm.
- Mounted on a plastic base.



MK064

MK064 Visible Expectant Mother Anatomy Kit

- Price Rs. 12375.00
- Size 55 cm.
- Dissectable in 48 pieces.
- Detailed instruction manual included.
- This visible anatomy model realistically shows the important parts of human body. Learn how body works by taking the model apart & see how the different organs work together to keep us alive & healthy.



MK050

MK050 Human Torso

- Price Rs. 12285.00

- Hand Painted in Vivid & Natural Colours.
- 50cm High
- 11 Dissectible Parts
- ABS Base
- Fully Illustrated Colour Instruction Manual.

DIGESTIVE SYSTEM



ZX-1301A

ZX-1301A

Human Digestive System

- Price Rs. 6750.00
- Made of HSP resin.
- Life size relief model of human digestive system in median section dissectible into 3 parts.
- Duodenum, caecum and rectum are opened. Rectum is unfolded.
- Transverse colon and front half of the stomach are removable.
- The model features the oral cavity, pharynx, esophagus, stomach, liver with gall bladder, pancreas, GI tract and spleen.
- Shown 56 positions.
- Mounted on wooden frame.
- Size : 40x80 cm.



XC-311

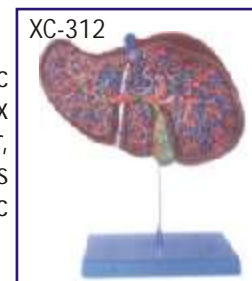
XC-311 Liver, Pancreas and Duodenum Model

- Price Rs. 3203.00
- To study the basic structure of the liver, spleen, blood vessels, pancreas, pancreatic duct, abdominal aorta & inf. vena cava.
- Life-size. Dissectible into 3 parts.
- Made of PVC.
- Size: 23x12.5x26cm.

XC-312 Liver Model

- Price Rs. 5025.00

- An economical way to study the basic structure of the liver. The complex vessels network in the opened liver, displayed in different colors on this model : hilus vessels, extra-hepatic and intra-hepatic bile ducts.
- Liver mounted on stand.



XC-312



NEW

ZX-1606

ZX-1606 Intestinal Villi

- Price Rs. 2925.00

- It is made of advanced HSP resin. Mounted on sturdy wooden base .
- Highly enlarged replica model of villi section of small intestine.
- 3D model shows one entire villus, one sectioned villus with arterioles and venules and one sectioned villus with lymphatic vessels. The model also shows different muscle layers in section.
- Size: 31 x 20 x 43 cm
- 17 parts labeled in total

ZX-1402 Human Stomach, Pancreas & Duodenum

• Price Rs. 3150.00

- Made of HSP resin having long durability.
- Total 70 parts are labeled.
- Size : 20x15x10 cm
- Model shown different layers of stomach wall.
- Separated into 3 parts.
- Mounted on stand with base.
- Model depicts lower esophagus, associated blood vessels and sectioned duodenum and pancreas (revealing large ducts up to its aperture).



NEW

ZX-1408



ZX-1408 Stomach

• Price Rs. 2985.00

- The model shows different muscle layers of stomach wall.
- Model shows lower esophagus, vessels and nerves.
- Model is on stand. Size : 17x16x25 cm.
- 36 parts labeled in total. Model is in 2 parts.

XC-306 Stomach Model

• Price Rs. 2730.00

- Made of hard plastic, Magnified 2 times the natural size.
- Shows the morphology of the stomach in a distended state.
- With the longitudinal section, the model shows the structures of the gastric folds, pyloric valve, pyloric sphincter muscles, gastric mucosa and the transitional mucosa of the gastric-esophagus.



GD/A12006



GD/A12006 Appendix and Caecum

• Price Rs. 5295.00

- Made of advanced PVC.
- Mounted on a stand, Natural size.
- Shows wall of the caecum & appendix.
- Separated into 2 parts
- Shows 17 positions

HEART & CIRCULATORY SYSTEM

ZX-1302



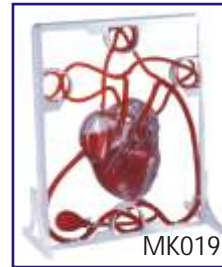
ZX-1302 Human Circulatory System

• Price Rs. 6750.00

- Made of advanced HSP resin.
- Half life sized relief model.
- Mounted on wooden base.
- Model shows following anatomical structures : Arterial and venous system, Heart showing chambers, Liver, Spleen, Lung, Kidneys, Partial skeleton.
- 81 parts labeled in total.

MK019 Pumping Heart

• Price Rs. 2505.00



- A 3-D working plastic heart model with clear chambers. Squeeze bulb pumps simulated blood through clear heart chambers just like real one.
- Complete heart model scale with display stand.
- Complete instruction manual, easy to assemble.
- Acrylic Paints & Brush are included.

PD002 Heart Model

• Price Rs. 3135.00

- Full Size.
- Durable ABS Base.
- Detachable Cover Piece.
- Highly Realistic Decoration.



XC-307 Jumbo Heart Model

• Price Rs. 4125.00

- Size: 25 × 23 × 23 cm.
- Made of PVC plastic.
- Clear conception of routes of the systemic & pulmonary circulation.
- Dissectible into 3 parts. 4 times enlarged.



ZX-1500 Blocked Artery Model

• Price Rs. 2175.00

- The model shows 4 stage cross section of narrowing of an artery due to build up of cholesterol and plaque.
- Four stages depict normal artery, fatty streak, fibrous plaque & blockage in order.
- All stages rotate on a hinge pin.
- Size : 12x8x4 cm.



NEW

ZX-1500

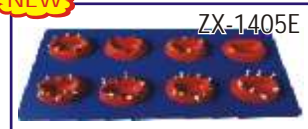
ZX-1611E Blood Groups Model

• Price Rs. 2625.00

- The model shows eight blood types ie. blood type A-/A+/B-/B+/AB-/AB+/O-/O+(according to the presence or absence of antigens & Rh factor).
- Mounted on board.
- Size : 60 x 25 x 6 cm.
- 12 parts labeled in total.

NEW

ZX-1405E



ZX-1405E

Human Heart (7 Parts)

• Price Rs. 2625.00

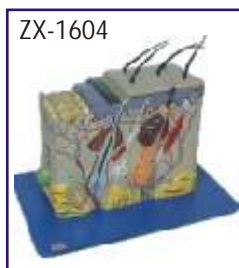
- Model is sectioned to expose ventricles, atria, and valves.
- Model also depicts blood vessels of heart and heart musculature in detail.
- Size : 20 x 20 x 22 cm.

NEW

ZX-1611E



SKIN & EAR



ZX-1604 Skin Model

- Price Rs. 2475.00
- Model shows 3-D section of human skin.
- Size : 21x10x25 cm.
- The model represents differentiated skin layers, hair, sweat glands, sebaceous glands, blood vessels, nerves and receptors for detailed examination.
- Model is mounted on sturdy wooden board for easy display.
- 35 parts labeled in total.
- Made of advanced HSP resin having long durability.

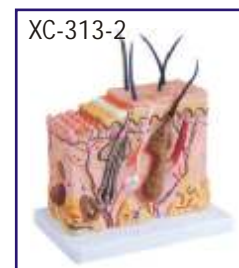
ZX-1401 Human Skin

- Price Rs. 1650.00
- The skin relief model of a skin section of the head.
- Made of HSP resin with long lasting durability.
- Size : 30x35 cm
- Delivered on sturdy wooden base.
- Skin section portrays the anatomy of the skin at 70 times life size and shows :- Representation of hair follicles with sebaceous glands, Sweat glands, Receptors, Nerves, Blood Vessels, Different layers of the skin.
- Total 31 parts are labeled.



XC-313 Skin Model Enlarged

- Price Rs. 3210.00
- A greatly enlarged (105 times) cross sectional view of the human skin showing three layers-epidermis, dermis, hypodermis, structures of the human scalp and a close-up view of a hair follicle, sweat gland, fatty tissue, sebaceous gland, blood vessels & nerves. Front, side and back view.
- Mounted on a plastic base.
- Size: 27 × 10 × 31cm.



XC-313-2

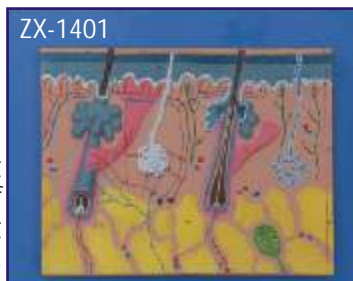
Skin Block Model

- Price Rs. 5175.00
- This model shows a section of human skin in three dimensional forms. Hair, sebaceous and sweat glands, receptors, nerves and vessels are shown in detail.
- 70 time enlarged.

XC-303C

Ear Model New Style Giant Size

- Price Rs. 3435.00



ZX-1401



XC-303C

- Dissectible in 6 parts.
- Made of PVC Plastic.
- Size 33x15x23 cm.

EYE



XC-316

XC-316 Giant Eye Model

- Price Rs. 3135.00

- Size: 15.5cm. Made of PVC. Mounted on a plastic stand. 6 times enlarged Model. The different parts of the eyeball model are detachable.
- Tunica external: showing cornea and sclera with attachments of ocular muscles and optic nerve.
- Tunica media: showing the iris, the ciliary body and the chorioid. Tunica interna is retina.
- Refraction media: showing the lens and the vitreous body.



XC-316B

XC-316B Eye with Orbit

- Price Rs. 7035.00

- The model shows the eyeball with optic nerves and muscles in its natural position in the bony orbit.
- Dissectible into 10 parts.
- 3 times enlarged.



ZX-1410

NEW

ZX-1410 Eye model on Stand

- Price Rs. 2145.00

- Model is highly magnified (6 times enlarged).
- Ideal for basic anatomical study of eye. shows sclera, cornea, eye muscle attachments, iris, retina, optic nerve & venels.
- Mounted on a removable stand.
- Model is in 7 parts.
- Size : 15x15x32 cm.

RESPIRATORY SYSTEM

ZX-1306 Human Respiratory System

• Price Rs. 6750.00



- Made of advanced HSP resin.
- Size : 40x80cm. Mounted on wooden sturdy base board for easy display.
- Well illustrated and informative.
- Upper half of the model displays nasal cavity, oral cavity, trachea, bronchia, bronchial tree in pulmonary lobe, right and left lungs cut open, heart in situ, pulmonary blood vessels and diaphragm with muscles attached to it.
- 24 positions are marked in upper part model.
- Lower half of the model shows enlarged pulmonary acinus displaying pulmonary alveoli, alveolar sacculles, bronchial artery and veins and alveolar capillary network.
- Total 14 positions are marked in lower part model.
- Model is accurately made from actual specimen references, photographs and encyclopedia reference under expert guidance.

XC-301 Human Larynx Model Magnified

• Price Rs. 1935.00

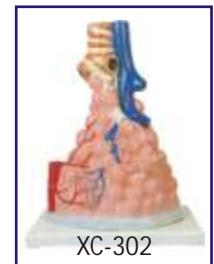


- Size : 11.5x11x24 cm, 3 parts dissectible.
- A functional model, On base 3 times enlarged.
- Shows movements of epiglottis & cartilages in the voice box.
- Helps to understand the morphology & structure of the respiratory tract and phonetic organ.

XC-302

Pulmonary Alveoli Model Magnified

• Price Rs. 2730.00



- Size: 26 x 15 x 35 cm.
- Made of PVC plastic and mounted on plastic base.
- The model shows the small branches of principal bronchus:
- Section of bronchiole of no cartilage.
- The relation between pulmonary alveoli & terminal bronchiole.
- The structure of alveolar sac and alveolar duct
- The capillary rete in the alveolar septa.



XC-309

Model of the Anatomical Nasal Cavity

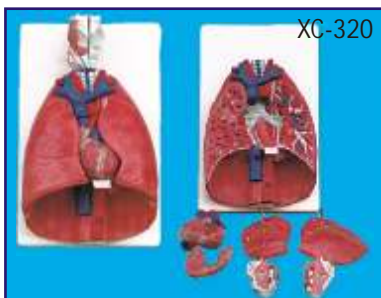
• Price Rs. 2010.00

- This model helps the students to understand:
- External nose : shows the section of the nasal bones and cartilages.
- Nasal cavity : on the lateral nasal wall show the superior, middle and inferior nasal conchae project medially into the nasal cavity forming the superior, middle and inferior nasal maxillary sinuses.
- Paranasal sinuses : shows the frontal, sphenoid and maxillary sinuses.

XC-330 Model of the Transparent Lung Segment

• Price Rs. 8235.00

- Presents 10 segments in the right lung and 8 in the left. The distributions of the bronchial tree can be observed through the transparent lungs.
- Right lung: right upper lobe (3 segments), right middle lobe (2 segments), right inferior lobe (5 segments)
- Left lung: left upper lobe (4 segments), left inferior lobe (4 segments).
- Distribution of the bronchial tree: right bronchus, left bronchus.
- Hilus of lung. The lung made of transparent plastic. The trachea & bronchial tree is made of PVC.



XC-320 Larynx, Heart and Lungs Model

• Price Rs. 9135.00

- Life size.
- Dissect able in 7 parts.
- Made of PVC plastic.
- Size 36x23x 12 cm.



XC-324 Model of the Head

• Price Rs. 6480.00

- The relief model of human head shows all relevant structures in great details.
- The high quality model is delivered on a base board for easy display
- Natural size.
- Showing interior parts of the oral cavity and pharynx with network of vessels.

EXCRETORY SYSTEM

XC-331

Male Urogenital System

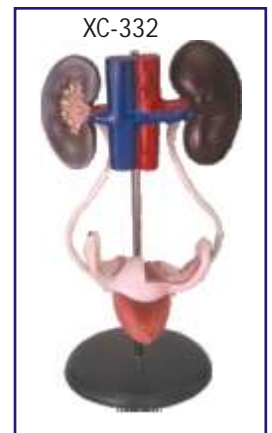
- Price Rs. 2805.00
- This is intended for schools as a visual aid in teaching physiology and hygiene to help the students to understand the external features of the urogenital system of the kidney, urinary bladder, penis and testicle.
- Made of PVC Plastic.
- Size 20x20x50 cm.



XC-332

Female Urogenital System

- Price Rs. 2805.00
- This model serves as a teaching model for teachers to teach the female urogenital system. The model shows kidney, ureters, urinary bladder, uterus, accessories of uterus, vagina, ovary membrane, ligaments, uterus ligament and its artery etc.
- Made of PVC plastic.
- Size 20x20x50 cm.



ZX-1303 Human Excretory System



- Price Rs. 6750.00
- Model is made of advanced HSP resin to maintain long durability.
- Delivered on wooden baseboard for easy display.
- Size : 40x80 cm. 36 parts are labeled in total.
- Model of human excretory system shows the structures of the retroperitoneal cavity which includes : descending aorta, inferior vena cava, renal veins and arteries, ureter, urinary bladder cut open to show trigone and other structures, adrenal glands, both kidneys, iliacal vessels and prostate gland.
- Left kidney and left adrenal gland in section.
- Model also shows testis and penis in section.
- The model has anatomical details that makes it a great teaching aid.



ZX-1603 Kidney Microstructure

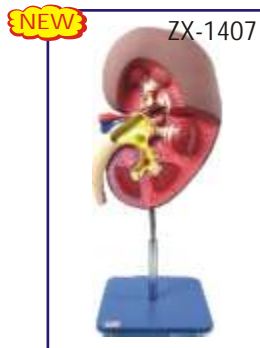
- Price Rs. 6750.00
- It is made of advanced HSP resin and is mounted on sturdy wooden base for easy display.
- Size: 30x20x24 cm & 45 parts are labeled in total.
- Beautifully painted in advanced colours.
- A complete 3-D model shows 5 sides view of following structures in great details : kidney in section, parenchyma of kidney and nephron, renal corpuscle and associated structures, loop of henle and associated structures.



XC-310-3

Human Kidney with Adrenal Gland

- Price Rs. 2520.00
- Life-size model features the kidney, adrenal gland, renal and adrenal vessels and upper portion of the ureter.
- Dissectible into 2 parts to reveal the cortex medulla, cortex vessels and renal pelvis.
- Model can be removed from the stand for instruction and patient education.
- Size: 12.5 x 12.5 x 20 cm.



ZX-1407 Kidney

- Price Rs. 2550.00
- Model shows a longitudinal section of the left kidney.
- Mounted on stand.
- Size : 3 times on life size.
- 31 parts labeled in total.

XC-333 Urinary System Model

- Price Rs. 11535.00
- The Model shows the structures of retroperitoneal cavity, pelvis with bones and muscles, inferior venacava, aorta with its branches, upper urinary tract, kidney with adrenal gland, ureter, bladder, etc.
- Dissectible into 4 parts.



REPRODUCTIVE SYSTEM

ZX-1304 Human Reproductive System Male

• Price Rs. 6750.00



- Made of HSP resin for long durability.
- Upper half part shows median section of the system Showing internal organs (accessory organs) epididymis, vas deferens, ejaculatory ducts, urethra, seminal vesicles, prostate gland and bulbourethral gland. External structures shown are penis, scrotum and testicles.
- Total 24 parts are labeled in upper half model.
- Lower half shows the model of scrotum and contents alongwith the penis.
- Total 17 parts are labeled in lower half model.

ZX-1305

Human Reproductive System Female

• Price Rs. 6750.00



- Made of advanced HSP resin.
- Upper half model shows both ovaries, left ovary in section, fallopian tubes with fimbriae, uterus, cut open vagina to show vaginal folds and cervix, bladder with cut open urethra, labia and rectum.
- Total 20 positions are marked in upper half model.
- Lower half model shows adnexa of uterus.
- Total 36 positions are marked in lower half model.
- Size : 40x80 cm

ZX-1403E

Male Pelvis Small (Magnetic)

• Price Rs. 1725.00

- Median section model shows male genital organs in normal position.
- Model is mounted on board.
- Model is in 3 parts.
- Size: 25x25x8 cm.



ZX-1404E

Female Pelvis Small (Magnetic)

• Price Rs. 1725.00

- Median section model shows female genital organs in normal position.
- Model is mounted on board.
- Model is in 2 parts.
- Size: 25x25x8 cm.



BRAIN & NERVOUS SYSTEM

ZX-1307 Human Nervous System

• Price Rs. 6750.00

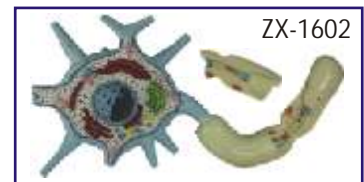
- Half life size relief model.
- Made of HSP resin.
- Delivered on wooden base.
- Model show central and peripheral nervous system, including spinal nerves radiated from CNS.
- 39 positions are displayed.



ZX-1602 Neuron

• Price Rs. 4950.00

- Motor neuron model in three-dimension.
- Made of high grade synthetic polymer.
- Size : 30x20x12cm
- The membranous covering has been cut away to expose the cytological ultra structure.
- Model shows branching dendrites, myelin-wrapped axon and node of Ranvier. A section of the axon can be lifted off to view the tightly-wound layers of the enveloping myelin sheath, neurolemma and the schwann cell.
- Total 19 positions are marked in the model.



XC-308 Brain with Arteries

• Price Rs. 2790.00

- Made of PVC plastic.
- Dissectible into 8 parts. On base.
- Natural size: 18.5x14x13.5cm.
- External features of the brain: cerebral hemisphere, brain stem, cerebellum.
- The arterial supply of the brain: sources, vertebral, internal carotid arteries, arteria supply of the cerebellum and cerebrum.



XC-318 Brain With Arteries on Head

• Price Rs. 5985.00

- This model shows the brain structure inside the skull. Two halves brains can be disassembled into: frontal with parietal lobes, temporal with occipital lobes, half of brain stem, half of cerebellum.
- Life-size, dissectible into 9 parts.



ANATOMICAL MODELS

ZX-1409E Head, Brain and Eye

• Price Rs. 4950.00



- Detailed model of head is in 4 parts with 2 parts brain and eye with optic nerve.
- Model shows natural position of nose, mouth cavity, pharynx, occiput & skull base.
- Mounted on board. Life size

ZX-1610E Reflex Arc

• Price Rs. 2588.00



- The model shows sensory, neural & motor elements of a complete reflex arc.
- Mounted on sturdy wooden base for easy display.
- Size: 30x40x3 cm.
- 22 parts labeled in total.

CPR MANIKINS

MB001B+ (AD)

NEW



MB001B+ (AD)

CPR Training Manikin Advance (Torso)

• Price Rs. 25500.00

- Features and Function:
- Two in one simulator
- Exclusive three position selector dial
- Breathing function : Real-like system
- Jaw thrust maneuver
- AED training
- Ultra hygienic
- Accessories & Beg, Face shield (set of 5).

MB001B+ CPR Training Manikin (Torso)

• Price Rs. 22500.00



- The Manikin is the only manikin in the market which includes both Adult and Child CPR simulator in one product.
- Economic and profitable product.
- Light weight: 2.2 Kg makes easier storing and transport for trainers.

- Adult & child position include a clicking sound for checking the correct compression depth according to Guidelines 2015.
- The selector on the back allows to chose Adult or Child position.
- "N" position on the selector allows to check without a clicking sound and without depth limit the acquired skills.
- The Manikin breathing system is real and exclusive on the market.
- The unique valve design allows to be connected nose-mouth-lung.
- The non-return system of the valve doesn't allow students inhale air from the lung bag helping to avoid Contagions.
- If the exclusive articulated head is not tilted properly and the nose is not pinched there will be no chest rise.
- Manikin is essential as complement of the AED trainer (not included).
- The torso design of Manikin and its size is proper to use AED trainer.
- The Manikin skin material is proper for using AED training pads and easy cleaning.

NEW

MB001 (AD)

CPR Training Manikin Advance (Torso)

• Price Rs. 22500.00

- MB001 (AD) same above but without accessories.

MB001

CPR Training Manikin (Torso)

• Price Rs. 19500.00

- MB001 Same as above but without accessories.

GYNAE & OBSTETRIC MODLES

GD/A42004

Embryo Model

• Price Rs. 5130.00

- Mounted on stand.
- Made of Advanced PVC.
- 4 weeks old embryo.
- Shows 12 positions.

GD/A42004



GD/A42010/1 Human Placenta

• Price Rs. 5130.00

- Mounted on stand.
- Made of Advanced PVC.
- Shows the structure of placenta and the relation between placenta and umbilical cord.
- 7 positions are displayed.

GD/A42010/1



DENTAL MODELS



TH001
Dental Care Model
 • Price Rs. 4560.00
 • 2 Times Full-Size
 • Giant Teeth with Toothbrush



TH002
Dental Model Small
 • Price Rs. 1980.00
 • 1.5 x Model with Hinge



ZX-1411
Dental Care Model
 • Price Rs. 2138.00
 • Highly enlarged dental model with normal tooth brush.
 • Size : 22x16x15 cm.

BUILD YOUR ANATOMY MODELS

- New Type of Puzzle • Highly Detailed Finish • Collectible Quality • Dissectable in Small Parts • Display Stand •



SK007
Eyeball Anatomy Model
 • Price Rs. 2250.00
 • Size 14 cm
 • 35 pieces set.



SK009
Heart Anatomy Model
 • Price Rs. 2250.00
 • Size 14 cm
 • 31 pieces set.



SK010
Cranial Nerve Skull Anatomy Model
 • Price Rs. 2250.00
 • Size 9 cm
 • 39 pieces set.

COMMUNITY HEALTH MODELS

- Made of high grade materials having long durability
- Mounted on sturdy wooden frame for easy display
- Supplied with well illustrated informative literature

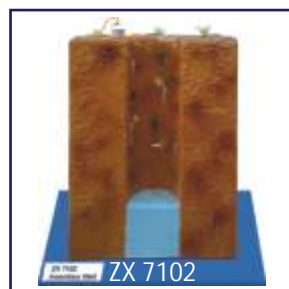
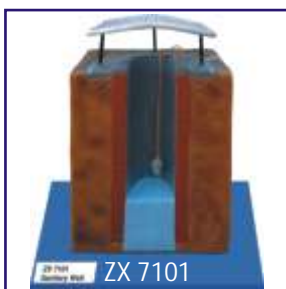
- Well labeled parts
- Beautifully painted in bright colors
- Model is a great teaching tool for nursing students

COMMUNITY HYGIENE

ZX 7101 - Sanitary Well.....	Price Rs. 7500.00
ZX 7102 - Insanitary Well.....	Price Rs. 7500.00
ZX 7103 - Deep and Shallow Well.....	Price Rs. 7500.00
ZX 7104 - Deep Tube Well.....	Price Rs. 9000.00
ZX 7105 - Step Well.....	Price Rs. 8250.00
ZX 7106 - Berkefeld Filter.....	Price Rs. 7500.00
ZX 7107 - Slow Sand Filter.....	Price Rs. 9750.00
ZX 7108 - Rapid Sand Filter.....	Price Rs. 8250.00

ENVIRONMENTAL SANITATION

ZX 7201 - House Drainage System	Price Rs. 9750.00
ZX 7202 - Chamber Type Incinerator	Price Rs. 9750.00
ZX 7203 - Activated Sludge Process	Price Rs. 9750.00
ZX 7204 - Bore Hole Latrine	Price Rs. 7500.00
ZX 7205 - Dug Well Latrine (Pit Latrine) ..	Price Rs. 7500.00
ZX 7206 - Trench Latrine	Price Rs. 8250.00
ZX 7207 - Septic Tank Latrine	Price Rs. 9000.00
ZX 7208 - Biogas Plant.....	Price Rs. 9750.00
ZX 7209 - Smokeless Chulha	Price Rs. 9000.00



TELESCOPES & BINOCULARS

10 x 50MM BINOCULARS (BN1050)

• Price Rs. 5250.00



BN1050

- 10x magnification
- Focussing Knob
- Neck strap
- Eye piece with rubber coating
- 50mm dia objective
- Rubber covered body
- Superior Lenses

8 x 40MM BINOCULARS (BN840)

• Price Rs. 3750.00



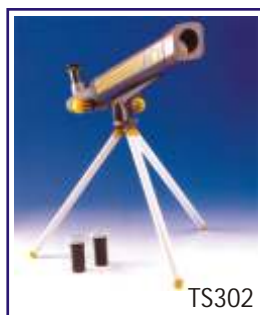
BN840

- 8x magnification
- Focussing Knob
- Neck strap
- Eye piece with rubber coating
- 40mm dia objective
- Rubber covered body
- Superior Lenses

20 x 50MM BINOCULARS (BN2050)

• Price Rs. 6000.00

- 20x magnification
- Same as above.



TS302

TELESCOPE (TS302)

• Price Rs. 3750.00

- 20x.40x.60x Eyepiece
- 30mm Objective Lens
- Diagonal Mirror
- 41cm (16") ABS Body
- Handy Adustable Knob
- 25cm (10") Tripod

ROCKET MODELS

ZX-4100E ROCKET MODEL

- Price Rs. 1410.00
- Small size. Height 44 cm.

ZX-4101E ROCKET MODEL

- Price Rs. 1950.00
- Large size. Height 71 cm.



ZX-4100E

ZX-4101E

MICROSCOPES

MICROSCOPE SET (MS006)

Power 100x-300x-600x set of 28 pieces as detailed
(For use upto middle class)

• Per Set Rs. 2925.00

- 20 cm Microscope
- Prepared Slides-2
- Blank Slides-6
- Statical Slide Covers-6
- Blank Labels-6
- Pair of Tweezers-1
- Collecting Vials-2
- Stirring Rod-1
- Spare Bulb-1
- Condenser Lense Cap-1
- 3x.6x Magnifier-1
- Instruction Manual
- Window Box Size: 8¾"×3½"×8½"



MS006

Age 8+

MICROSCOPE SET (MS002)

with Light & Projector Power 100x-900x Set of 63 pieces (For use upto secondary level)

• Price Rs. 6075.00

- 23 cm Microscope with 8x, 25x, 50x objective Lenses & Die-Cast Body-1
- Huygen's Eyepiece 12x-18x Zoom-1
- Micro-Data Bank-1
- Micro Slicer-1
- Blank Slides-12, Cover Glasses-12
- Blank Labels-12, Spare Bulb-1
- Statical Slide Covers-12
- Vial of Eosin-1, Collecting Vials-2
- Vial of Gum Media-1
- Stirring Rod-1, Petri Dish-1
- Vial of Methylene Blue-1
- Scalpel-1, Needle-1
- Pair of Tweezers-1
- Condenser Lense Cap-1
- Graduated Cylinder-2
- Instruction Manual-1
- Window Box Size: 15½"×3¼"×13¾"
- Safety Goggles-1



MS002

Age 8+

SCIENCE TEACHING KITS

CHEMISTRY LAB KIT (CM001)

- (10) Chemicals
- (8) Litmus Papers
- 80 ml Glass Beaker
- (2) Test Tubes with Stoppers
- Test Tube Rack
- Test Tube Holder
- (2) Stopper-Corks
- (3) Stopper-Corks with Holes
- (3) Glass Tubes
- Rubber Tube
- Spout Brush
- Funnel
- Price Rs. 4125.00
- (6) Filter Papers
- Alcohol Lamp
- (2) Measuring Spoons
- Stirring Rod
- Safety Goggles
- Instruction Manual with 130 Experiment Procedures & Results



SIMULATED FROG DISSECTING KIT (VT021)

• Price Rs. 6600.00



- Authentically detailed frog Body
- Removable soft texture organs
- Cross sections show muscle structure
- Glow-In-Dark "X-RAY" included
- Child safe lab tools included

AM001 ATOMIC MODEL SET SUPERIOR

• Price Rs. 9450.00

NEW

- The set consists of moulded balls and sticks of different colours and size arranged in different size lugs.
- The set is very helpful in modelling different compounds with the help of given keycard.
- Box size : 51 x 39 x 7 cm.



6 in 1 Solar Kit (EL315)

• Price Rs. 2550.00

This Solar kit enables children assembling the parts and transforming into six different types of motor driven apparatus actuated by Solar Power.

- Solar Robot
- Solar Wheeler
- Solar Windmill
- Solar Plane
- Solar Helicopter
- Solar Airboat



CS015 STUDENT BALANCE KIT

• Price Rs. 1425.00

- 4 x Weights
- 4 x Arms
- 2 x Weighing pans
- 2 x Levers
- 2 x Triangle axials
- 2 x Pointers
- 2 x Scales
- 1x Central Axial
- 1x Pivoted weight
- 2 x Arms side holders



TK4003

Age 8+



TK4003 Wake Me Robot

• Price Rs. 3000.00

- Place it next to your bed at night.
- In the morning when light falls on it, the robot will start to move and buzz.
- Easy to assemble - no soldering required.

TK7072

Age 8+



TK7072 Go Circuit

• Price Rs. 3855.00

- Assemble more than 24 different and fascinating circuits for motor, buzzer, lights and other circuits.
- Make alarm & games, and even invent your own circuits.
- Additional circuits are explained in manual.
- Batteries required.

SCIENCE KITS



TK7074 Go Weather

• Price Rs. 3855.00

- Over 30 fascinating activities all about weather and climate.
- Kit includes a real wind speed indicator.
- Build your own barometer, weather vane, rain gauge and hydrometer.
- Observe the weather traits and see how they'll affect tomorrow's weather!
- Make a rainbow, produce clouds, lightning, rain and even a thunderstorm



TK7086 My Senses

• Price Rs. 5325.00

- This kit is part of our Body Awareness Science Series, exploring the five senses: sight, hearing, smell, taste and touch.
- Perform over 50 fascinating experiments.
- Use a genuine stethoscope, make a telescope with real lenses and create rainbows with a prism.
- Prepare perfume and stink bombs with chemistry lab equipment.
- Learn how to read and send messages in Braille. Also includes many activities suitable for party games.



TK8200 Physics

• Price Rs. 5250.00

- 250 exciting & captivating experiments which will introduce you to the fascinating field of Physics.
- Experiment with Electricity, magnetism, motors, gases, liquids, heat, sound, force, pressures and motion.
- Understand nature's basic laws.



TK7076 Go Electronic

• Price Rs. 3375.00

- Build 6 exciting electronic devices - a burglar alarm, a fire alarm, a musical organ, a siren, a sound effects generator and a radio.
- Console and electronic components included.
- Easy to design your own additional circuits.
- Battery required.



TK7094 Vision

• Price Rs. 2880.00

- A simple explanation of how the eye works.
- Activities to demonstrate some of the eye's functions.
- Eye testing equipment to test the eyes for normal sight, short sightedness and long sightedness.
- Eye testing charts included.



TK8360 Super Chem 150

• Price Rs. 5325.00

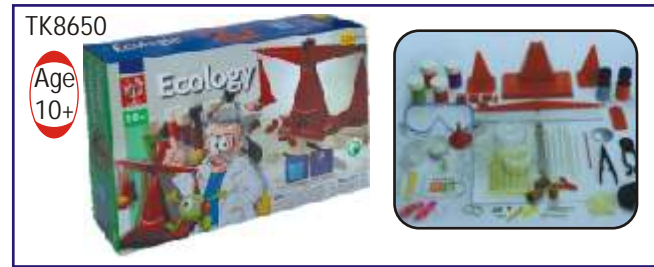
- 150 exciting science activities using only products found in the kitchen.
- There are over forty pieces of equipment enabling you to carry out all of the 150 activities.
- These activities include the following science phenomena: chemistry, optics, bubbles, magnetism, physics and chromatography.
- The kit includes an attractive four colour book.



TK8405 Solar Power

• Price Rs. 5475.00

- 150 Challenging Experiments.
- Build a solar electric generator, motor, water heater, furnace, thermometer, crane and solar energy mobiles.
- Unique experiments with colour optics, electroplating, stroboscopes, thermodynamics and Moire patterns.



TK8650 Ecology

• Price Rs. 5250.00

- 150 Experiments dealing with ecology.
- Topics include bacteriology, climate, water, air, nature, chemical analysis, water and soil pollution, recycling and acid rain.
- Understand the problems & improve the environment.



TK8740 Hydrolab

• Price Rs. 5850.00

- Complete greenhouse system for cultivating plants and vegetables in an "indoor" environment, without soil, using a modern Hydroponics system.
- Kit comes with a base, fertilizer tank, adjustable translucent observation cover, 4 growing trays, safe chemicals & bedding for propagating growth of plants.



TK8950 Energy

• Price Rs. 6075.00

- More than 200 experiments.
- Kit gives an understanding of the various kinds of energy sources, how to transform them and use them.
- Learn about windmills, levers, solar energy, batteries, electricity, electrochemistry and more.
- Make your own simple machines.

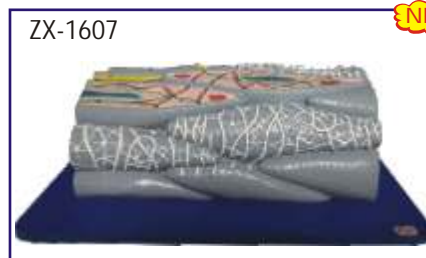
HISTOLOGY AND BIOMOLECULES MODELS



DN001 DNA Model Kit

• Price Rs. 2400.00

- Made of Plastic.
- Size: 10x10x45 cm.



ZX-1607 Smooth Muscle Fibre

• Price Rs. 3525.00

- Block model is a greatly enlarged smooth muscle fibre.
- The model shows significant structures including sarcoplasm, nucleus, mitochondria, dense body, filaments, autonomic neurons and gap junction.
- Size: 36 x 25.5 x 13 cm
- 18 parts labeled in total



ZX-1608 Cardiac Muscle Fibre

• Price Rs. 3525.00

- Block model is greatly enlarged cardiac muscle fibre.
- The model shows significant anatomical structures such as sarcolemma, nucleus, mitochondria, transverse tubules, cardiomyocytes, sarcoplasmic reticulum, intercalated disc, M line, disc and various filaments.
- Mounted on durable wooden base.
- Size: 41 x 20 x 19 cm
- 17 parts labeled in total



ZX-1609 Skeletal Muscle Fibre

- Price Rs. 3375.00
- Block model is greatly enlarged model of skeletal muscle fibre.
- Model shows various anatomical structures line neuromuscular junction. T tubules, negofibrils, bands, nucleus etc.
- Mounted on wooden base.
- Size: 20 x 20 x 19 cm
- 21 parts labeled in total



ZX-2100 Chloroplast

- Price Rs. 7800.00
- Block model is highly enlarged open section of a typical chloroplast.
- Model shows inner & outer membranes, granum, stroma, DNA, strach granule, Osmiophilic globule and thylakoids.
- Mounted on sturdy wooden base.
- Size: 36 x 25.5 x 19 cm.
- 13 parts labeled in total.



ZX-2101 Mitochondria

- Price Rs. 2925.00
- Block model is highly enlarged open section of typical mitochondria.
- Model shows outer and inner membranes, cristae, ribosomes, matrix, mitochondrial DNA, etc.
- Mounted on sturdy wooden base.
- Size: 41 x 21 x 13 cm.
- 10 parts labeled in total.

ZX-2102 Bacterium

• Price Rs. 7800.00



- Model is greatly enlarged bacterium model depicting anatomical complexity of a general prokaryotic cell.
- The model is a set of 4 models including block models of the cell wall of gram positive and gram negative bacteria, opened bacterial spore showing spore coat & internal structures and main bacterium.
- Mounted on sturdy wooden base.
- Size : 55x40x9.5 cm. 34 parts labeled in total.

ZX-3100E AIDS VIRUS

• Price Rs. 1913.00



- Highly enlarged detailed model of HIV (Human Immunodeficiency Virus) commonly called AIDS virus.
- Model shows outer lipid membrane with protein structures, internal nucleus with viral RNA.



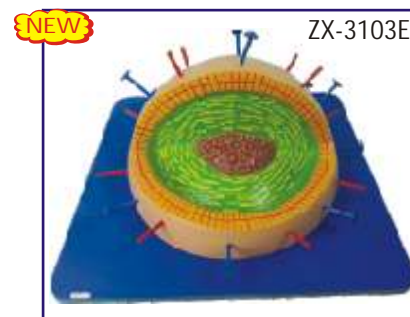
ZX-3101 Animal Cell Model

- Price Rs. 3075.00
- Made of high grade synthetic polymer having long durability.
- Delivered with removable stand.
- Size: 30x40x10 cm.
- Well illustrated & informative.
- 19 parts labeled in total.
- Beautifully painted in bright colors.



ZX-3102E Rabies Virus

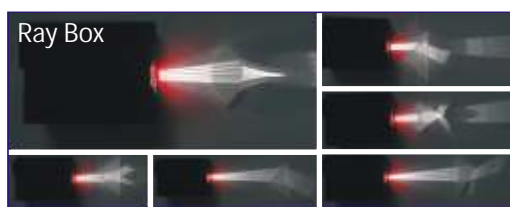
- Price Rs. 3525.00
- Model of rabies virus is enlarged millions of times to show viral RNA, lipid envelope, glycoprotein, polymerase etc.
- Mounted on wooden base.
- Size : 35x25x10 cm.
- 6 parts labeled in total.



ZX-3103E Influnza Virus

- Price Rs. 3525.00
- This millions of times enlarged model of influenza virus shows lipid envelope, capsid, nucleoprotein, hemagglutinin and neuraminidase.
- Mounted on wooden base.
- Size : 35x35x16 cm.
- 5 parts labeled in total.

SCIENCE WORKING MODEL



SWM001 Ray Box

• Price Rs. 1800.00 Set

- Standard light source for ray optics experiments.
- Multi-slit comb produces a bright and broad fan of parallel incident ray streaks.
- It is easy to use, extremely durable and the rays produced are bright enough to be seen clearly.
- Different lenses and prisms are included.



SWM002 Mutual Induction

• Price Rs. 1050.00 each

- Model is very effective for understanding the concept of mutual induction, magnetic flux and emf.
- This model shows the phenomenon in which change of current in one coil causes an induced emf in another coil placed near the first coil.
- The coil in which current is changed is called primary coil and the coil in which emf is induced is called secondary coil.

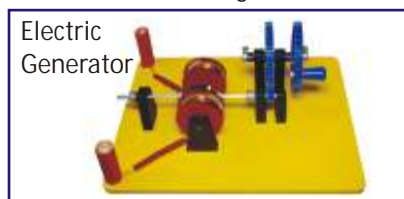


SWM003 Electric Motor

• Price Rs. 600.00 each

- This model shows a simple way to convert the electric energy into useful work, or mechanical energy, by machines called electric motors.

- With the help of this model student can learn how Electric motors work due to electromagnetic interactions: the interaction of current and a magnetic field.



SWM007 Electric Generator

• Price Rs. 1800.00 each

- This electrical generator converts mechanical energy into electrical energy.
- It is based on the principle of production of dynamically induced e.m.f (Electromotive Force).
- Whenever a conductor cuts magnetic flux, dynamically induced e.m.f. is produced in it according to the Faraday's Laws of Electromagnetic Induction. This e.m.f. causes a current to flow in the circuit.

SWM004 Rain Alarm

• Price Rs. 488.00 each

- Rain alarm model is an easy project which will give the alarm when there is rain, so that we can make some actions and save the rain water.
- Student can use this concept in the application of irrigation field, home automation, communication, automobiles etc.
- This modal shows the simple and reliable circuit of rain water alarm which can be constructed at low cost.



SWM005 Laser Security Alarm

• Price Rs. 600.00 each

- This laser Security alarm is based on the interruption of Laser beam.
- A low cost Laser pointer is used as the source of light beam.
- When somebody breaks the laser path, the alarm will be generated for few seconds.
- With the help of this modal student can understand the working concept of Diode, Resistance, PCB, LDR, LED & Buzzer.



SWM006 Syringe Generator

• Price Rs. 390.00 each

- This generator model is very simple.
- The model consists of an old syringe, two strong neodymium magnets, an insulated copper wire (30-gauge) and an LED.
- Magnets are placed inside the barrel of the old syringe. The magnets are loose and move freely inside the barrel.
- When syringe is shaken vigorously, an induced e.m.f. is produced in the coil due to cutting of magnetic flux and the LED glows.

NEW **Piston Generator**



SWM008 Piston Generator

- Price Rs. 1800.00 each
- The simplest liner generator contains a coil & a permanent magnet in a piston.
- When piston is moved back and forth the magnet oscillates through the coil and induces current.

VISUAL TEACHING AIDS

OHP 250T KANSIL'S OVERHEAD PROJECTOR :
Rs. 11850.00 each

- Low voltage
- Latest Design
- Halogen lamp 24V-250W
- Rack & Pinion Focusing System
- Equipped with dual bulb system
- Light weight
- Metal Body
- Motorised cooling System
- Intensity Control



SP150 Slide Projector Manual :
Rs. 6000.00 each

- Versatile design
- Halogen Lamp 24V-150W
- Noiseless cooling system
- Slide carrier for 2 slides
- Rigid construction
- Height adjustable
- Manual Focusing



OPTIONAL ACCESSORIES

OA01 Projection Screen 70"×52" (175 × 130 cms) with folding tripod stand.....	Each Rs. 4875.00
OA02 Projection Screen 60"×60" (150×150 cms) with folding tripod stand.	Each Rs. 4875.00
OA03 Projection Screen 90"×72" (225×180 cms) with folding tripod stand.	Each Rs. 10800.00
OA04 Map Screen made of thick white rexine with roller 175×130 cms.	Each Rs. 2100.00
OA11 Overhead Projector marker set of 7 pens including Eraser Pen.....	Per set Rs. 600.00
OA12 Blank Overhead Projector Transparencies - 210×297 mm. Packet of 100 sheets.....	Per Pkt Rs. 675.00
OA21 Bulb for OHP 24v-250W	Each Rs. 330.00
OA22 Bulb for Slide Projector 24V-150W.....	Each Rs. 330.00
OA31 Laser Pointer Pen Type with AAA size batteries.....	Rs. 1575.00
OA32 Laser Pointer Pen type with button cells	Rs. 675.00

OVERHEAD PROJECTOR TRANSPARENCIES

Price per transparencies Rs. 68.00

OT01 Botany set of 75	OT07 Meiosis set of 12
OT02 Zoology set of 75	OT08 Physics set of 50
OT03 Animal Cell & Tissues set of 15	OT09 Chemistry set of 40
OT04 Chick Embryology set of 20	OT10 Human Physiology set of 50
OT05 Frog Development set of 15	OT11 Sense organs set of 20
OT06 Mitosis set of 9	OT13 First Aid set of 50



2"×2" COLOURED 35 mm SLIDES HEALTH SECTION

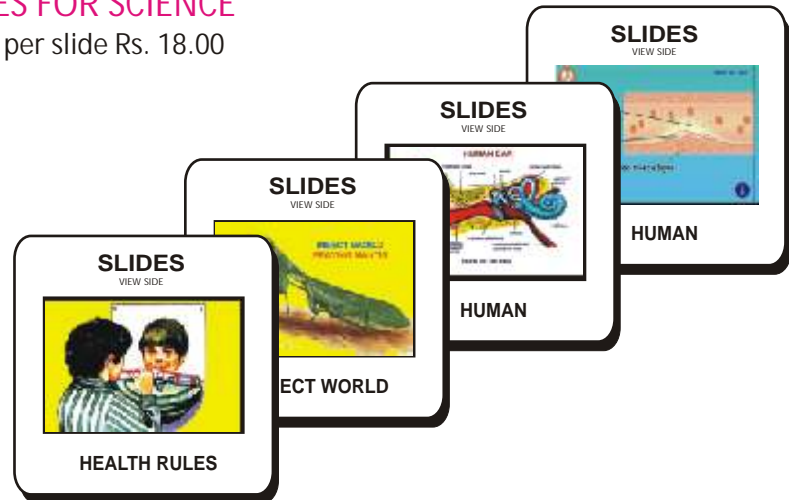
Price per slide Rs. 18.00

<u>PREVENT THE DISEASES</u> each set contain 20 slides		SPD14 Hepatitis	SHC06 Clean Body
SPD01 Cholera	SPD15 Heart Attack	SHC07 Clean Water	SHC08 Constituents of Food
SPD02 Malaria	SPD16 Diabetes	SHC09 Malnutrition	SHC10 Immunization
SPD03 Aids	SPD17 Asthma	<u>OTHERS</u>	
SPD04 Plague	SPD18 Arthritis	SH01 Human Physiology set of 50	
SPD05 Tuberculosis	SPD19 Thyroid	SH03 Yogasan set of 20	
SPD06 Leprosy	SPD20 Blood Pressure	SH04 Vitamin set of 10	
SPD07 Influenza	<u>HEALTH CARE</u> each set contain 20 slides		SH06 Human Body set of 10
SPD08 Jaundice	SHC01 Health Rules	SH07 First Aid set of 50	
SPD09 Cancer	SHC02 Causes of Diseases	SH09 Mothercraft set of 30	
SPD10 Typhoid	SHC03 Prevention of Diseases	SH11 Child Welfare set of 20	
SPD11 Viral Diseases	SHC04 Effects of Alcohol	SH12 Family Planning set of 100	
SPD12 Chicken Pox	SHC05 Tobacco & Habit Forming Drugs		
SPD13 Dysentery			

SLIDES FOR SCIENCE

Price per slide Rs. 18.00

- SSC01 Primary Science For Class I set of 40
- SSC02 Primary Science For Class II set of 40
- SSC03 Primary Science For Class III set of 40
- SSC04 Primary Science For Class IV set of 50
- SSC05 Primary Science For Class V set of 50
- SSC06 Science For Class VI set of 50
- SSC07 Science For Class VII set of 50
- SSC08 Science For Class VIII set of 100
- SSC09 Science For Class IX set of 100
- SSC10 Science For Class X set of 100
- SSC11 Physics set of 100
- SSC12 Chemistry set of 100
- SSC13 Biology set of 100



ZOOLOGY SECTION

Price per slide Rs. 18.00

- | | | |
|--------------------------------------|--------------------------------------|--------------------------------------|
| SZ01 Anatomy of Frog set of 30 | SZ12 Frog Embryology set of 15 | SZ23 L.H. Silkworm set of 10 |
| SZ02 Anatomy of Rabbit set of 20 | SZ13 Rabbit Embryology set of 20 | SZ24 Liverfluke & Tapeworm set of 20 |
| SZ03 Amoeba & Paramecium set of 20 | SZ14 Evidence of Evolution set of 20 | SZ25 Mammals set of 30 |
| SZ04 Animal Histology set of 30 | SZ15 Fishes set of 30 | SZ26 Meiosis set of 15 |
| SZ05 Animal Kingdom set of 30 | SZ16 Hydra & Obelia set of 20 | SZ27 Mendel Heredity set of 20 |
| SZ06 Animal World set of 40 | SZ17 Harmful Insects set of 20 | SZ28 Mitosis set of 10 |
| SZ07 Beaks & Feet of Birds set of 20 | SZ18 Useful Insects set of 20 | SZ29 Prehistoric Animals set of 20 |
| SZ08 Birds set of 30 | SZ19 L.H. Butterfly set of 10 | SZ30 Protozoa set of 10 |
| SZ09 Cockroach set of 20 | SZ20 L.H. Honey Bee set of 10 | SZ31 Reptiles & Amphibians set of 40 |
| SZ10 Earthworm set of 20 | SZ21 L.H. Housefly set of 10 | SZ32 Snakes set of 20 |
| SZ11 Chick Embryology set of 20 | SZ22 L.H. Mosquito set of 10 | |

BOTANY SECTION

Price per slide Rs. 18.00

- | | | |
|---|---|--|
| SB01 Algae Fungi set of 20 | SB11 Inflorescence set of 10 | SB20 Plant Kingdom set of 30 |
| SB02 Angiospermic Families set of 15 | SB12 Insectivorous & Parasitic Plants set of 20 | SB21 Plant Physiology set of 30 |
| SB03 Bacteria set of 20 | SB13 L.H. Mucor set of 15 | SB22 Pollination set of 10 |
| SB04 Bryophyta & Pteridophyta set of 20 | SB14 Leaves set of 20 | SB23 Roots set of 20 |
| SB05 Cell Structure set of 20 | SB15 Marchantia set of 15 | SB24 Spirogyra set of 20 |
| SB06 Dispersal of Seeds set of 20 | SB16 Meiosis set of 15 | SB25 Stems set of 20 |
| SB07 Fern set of 10 | SB17 Mitosis set of 10 | SB26 Vegetative Reproduction set of 20 |
| SB08 Fruits set of 20 | SB18 Plant Anatomy set of 20 | SB27 Water Plants set of 10 |
| SB09 Germination of Seeds set of 20 | SB19 Plant Histology set of 30 | |

SPECIAL SLIDES

- | | | | |
|---|-------------|---|-------------|
| SSS01 Biology Album for 10+1 set of 100 | Rs. 2100.00 | SSS05 Pathology set of 100 | Rs. 2850.00 |
| SSS02 Biology Album for 10+2 set of 100 | Rs. 2100.00 | SSS06 Chemistry Album for 10+2 set of 100 | Rs. 2100.00 |
| SSS03 Medicinal Plants set of 100 | Rs. 2850.00 | SSS07 Physics Album for 10+2 set of 100 | Rs. 2100.00 |
| SSS04 Histology set of 100 | Rs. 2850.00 | SSS09 Human Physiology set of 100 | Rs. 2850.00 |

BIO VIEWERS

- BV01 Slide viewer for Viewing Slides in available light Rs. 750.00
 Biostrips are available on various subjects. Biostrips can be prepared on any subject (Minimum quantity 50 each title).

INDIAN SCHOOL SYLLABUS ON VIDEO

From Hazel Dolbrien of the U.K. Any one CD Rs. 450.00

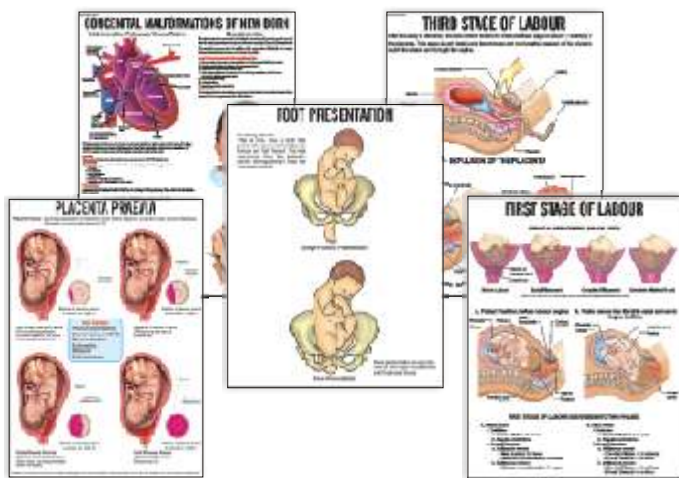
BIOLOGY			PHYSICS		
Code	Title	Time (in mins.)	Code	Title	Time (in mins.)
E01	Sleepy Heads, Amoeba, Protista.	41	E22	Light, Measurement of Acceleration of Gravity, Very Low Temperature, Reflection, Refraction & Polarisation of Light.	53
E02	How Insects Develop Part -I & II, Life of the Forest.	49	E23	Photoelectric Effect, prelude to Power, Refraction, Reflection & Scattering of Light	51
E03	What are Cells, Role of the Cell Membrane, Peripheral Nervous System.	57	E24	Dioxide Characteristics, Power, heat as a Radiant Energy.	42
E04	The Woods, Woodlands: Plant Movements, What is Autumn, What is Spring.	52	E25	Buoyancy, Vibrations, learning about Sound.	51
E05	About Your Body, Tissues of the Human Body, Body Fights Diseases.	43	E26	Magnetism part-I, II & III.	49
E06	How Seeds are Scattered, Dispersal of Seeds and Fruits, How Seeds Grow.	52	E27	Friction, Colour from light, magnetism, Magnets & their uses.	40
E07	Life Cycle of Insects Part -I & Part - II, life story of the Earthworm, food feeding habits.	47	E28	Conquest of the atom, X-Ray Diffraction, Principles of Nuclear Fission.	55
E08	Process of Pollination, Germination & Growth of plants, Life Cycle of Flowering Plants, Animals Breathe in many ways.	54	E29	Electricity (Fundamentals), pressure & Current, Electrical sources.	55
E09	Meiosis, Mitosis, Circulatory System.	51	E30	Introducing the Oscilloscope, Electromagnetic Waves, Isotopes.	53
E10	Temperature Regulation, Chemistry of The Cell Part - I & Part II.	52	E31	Electromagnetic Waves Part-I & Part -II.	42
E11	Effect of Light on Oxygen Production, effect of Chlorophyll & Carbon Dioxide on Oxygen production & Starch Formation, Plants Make Food, Photosynthesis.	56	E32	Waves & Vibrations, Young & the Theory of Light, Principles of T.V.	54
E12	Circulation of the Heart, Respiratory, Reproductive & Nervous System.	50	E33	Velocity of Gamma Rays, Learning About Heat, Discovery of Radioactivity.	46
E13	Liver, Digestive System Part-I & Part -II, Lymphatic System.	54	E61	Steam & Steam Generation Time Measurement & Meaning.	51
E14	Tissue Respiration, How Plants Move, Coral Reef Community.	51	E62	Energy From the Sun, How it works.	41
E43	Growing Plants, Fungi & man, Fungi.	47	E63	Actions & reaction, Rotational Dynamics.	34
E48	Insects, Roots & Plants that help us.	44	E64	Fuels for the Future, How Machines help us.	47
E49	Genetic Investigation, Genetics & Plant Breeding, Pattern Developments.	43	E65	Rockets, Doppler Effect, Wave Particle Quality, Newtons II Law.	53
E50	Autumn Brings Changes, Spring Brings Changes, Flying Birds.	44	CHEMISTRY		
E51	Parasites, Microbiology: Microbes & their Control, Diffusion & Osmosis, Structure of Protein.	54	<i>Code</i>	<i>Title</i>	<i>Time (in mins.)</i>
E52	Autonomic Nervous System & Drugs.	35	E34	Atoms & Molecules (Properties of matter), Chromatography, Combustion.	47
E53	Life Cycle of a Frog, Skeleton, Skin as a Sense Organ, Egg & Sperm.	50	E35	Acids, Bases & Salts, Physics & Chemistry of Water.	41
E54	Sense Perception Part-I & Part-II	55	E36	What is Soap?, Sodium Family, Nitric Acid Compounds & Nitrogen Cycle.	48
E55	Introduction to Dissection, Work of Kidneys	42	E37	O for Oxygen, Strange case of Liquid Oxygen	44
E103	Human Brain Part-I: The Self	50	E38	Atomic Model & The Periodic Table.	44
E104	Human Brain Part-II: Language	50	E66	Crystallisation, Distillation.	49
E105	Human Brain Part-III: Fear	50	E67	Properties of Matter I & II.	46
E106	Human Brain Part-IV: Memory	50	E68	Properties of Matter III, IV & V.	55
E107	Human Brain Part-V: Seeing	50	E69	Basic Laboratory Techniques I.	54
E108	Human Brain Part-VI: Madness	50	E70	Basic Laboratory Techniques II.	60
			E71	Basic Laboratory Techniques III.	45
			E72	Preparation of Oxygen: Demonstration, Development of Electrochemistry, ABC of ⁺ NPK, Facts about Fertiliser.	52
			E73	Vanadium: A Transistor Element, metals & Non- metals, Silicon & its Compounds.	
				Diamonds a Metal working	57
			E94	Rutherford Model of An Atom	42

Teaching Learning Material for Medical & Nursing Institutions

MODELS, MANIKINS & SIMULATORS



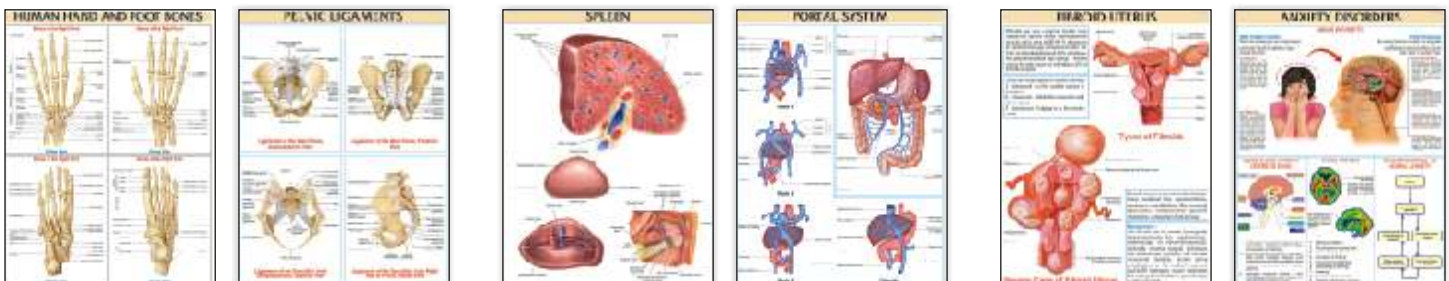
IMPORTANT NURSING CHARTS



HUMAN PHYSIOLOGY CHARTS



OTHER MEDICAL CHARTS



BONES & LIGAMENT CHARTS

ORGAN & SYSTEM CHARTS

DISEASE & DISORDER CHARTS

For your requirements of items for Medical, please ask for our separate catalogue.

Teaching Learning Material for Social Studies



Globes



Models



Apparatus



Solar System



Rocks & Minerals



Surveying



Geographical Models



Slides

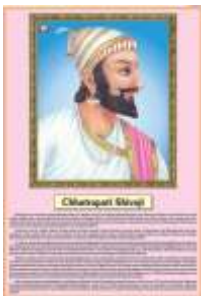


Models



Binoculars

Rocket Model



Life Sketch



Maps



Charts



Photos



For more details, please ask for our SOCIAL STUDIES CATALOGUE

**PRODUCT
CATALOG**
Make Your Education Easy

CONTACT :

Reg. Office: C-24 Guru Nanak Pura, Laxmi Nagar, Delhi-110092 (INDIA)

Phone: +91-8920978276, +91-8447671646, +91-9560234684

Email: vagminetek@gmail.com, info@vagminetechnologies.in

Website: www.vagminetechnologies.in



VAGMINE TECHNOLOGIES

(An ISO 9001:2015 Certified Company)