



# VAGMINE TECHNOLOGIES

(An ISO 9001:2015 Certified Company)



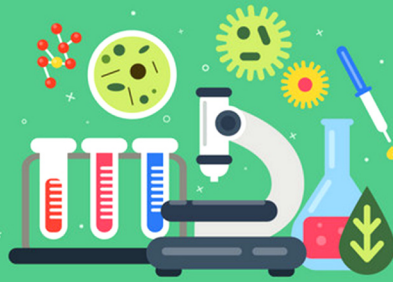
# CHEMISTRY CATALOG

*Make Your Education Easy*

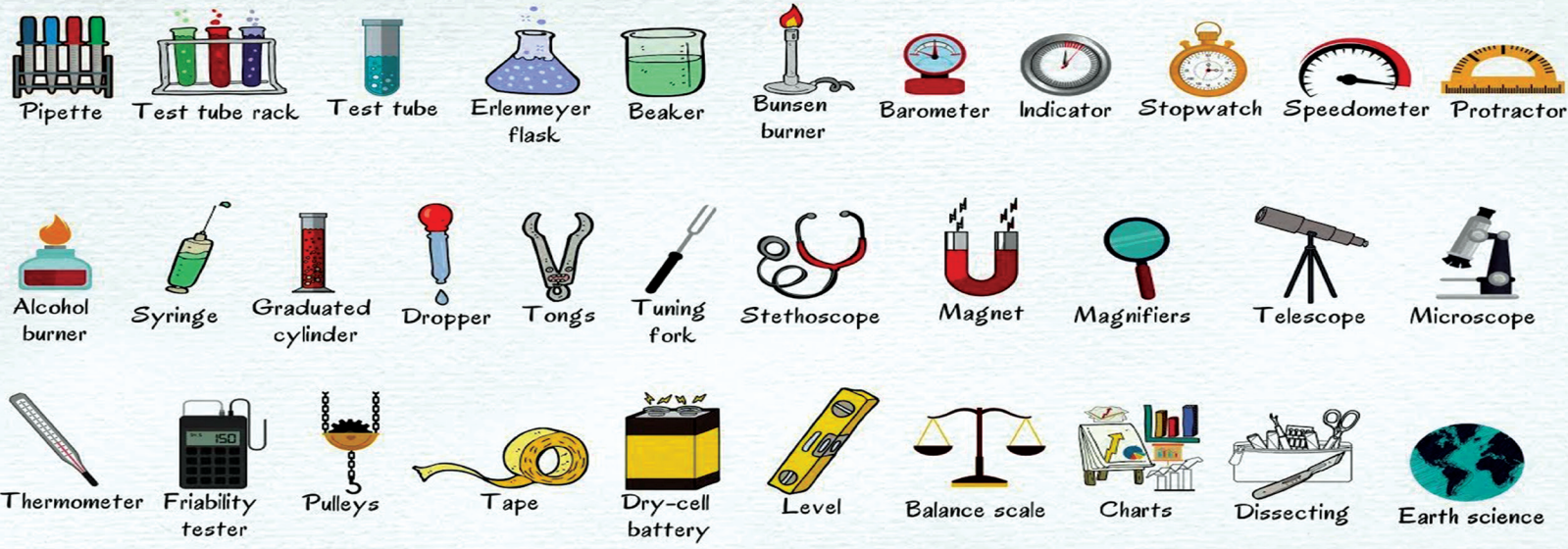
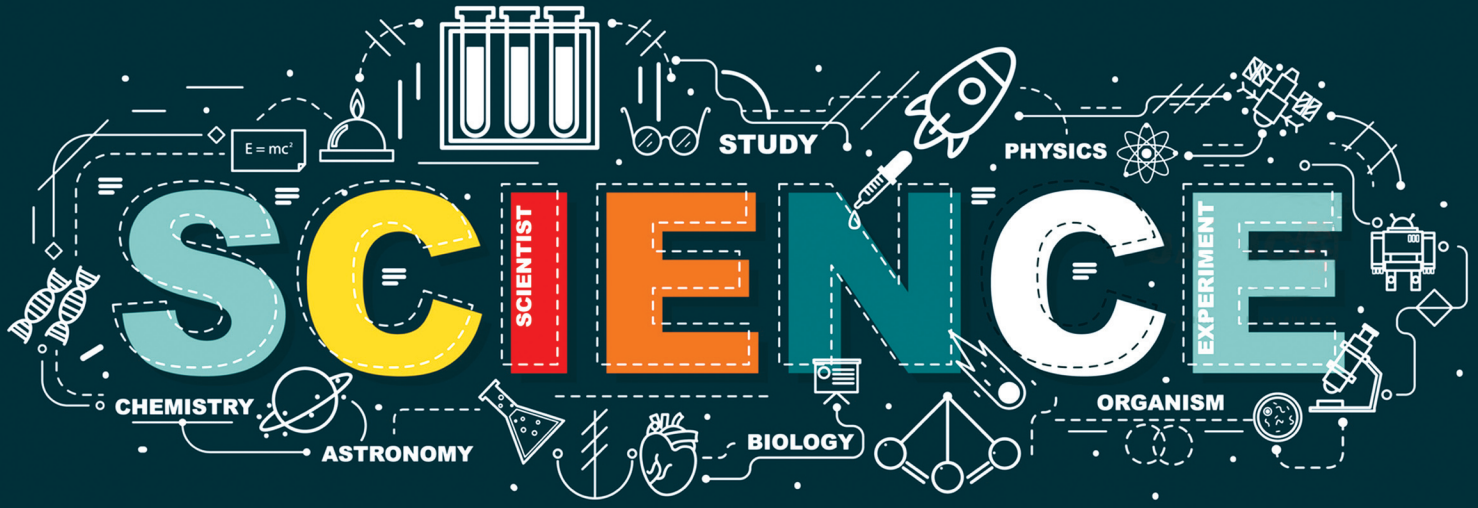
# PHYSICS



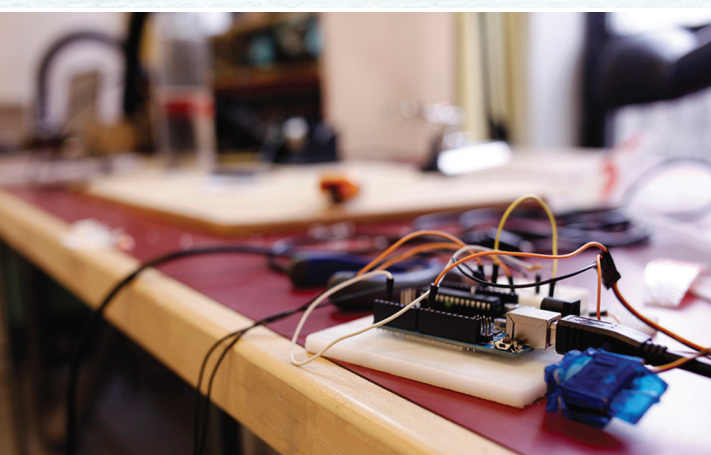
# BIOLOGY



# SCIENCE LAB

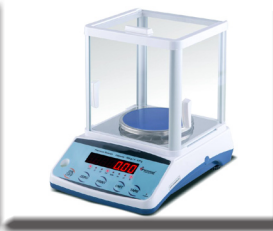


Homemade Inventor's Box





Abels Flash Point Apparatus



Analytical Balance



Bomb Calorimeter



Borosil Glassware



Chemicals



Science Lab Equipment



Laboratory Glassware



Burners



Test Tube Stand



Reagent-bottles



Glassware



Uv-Vis-Spectrophotometer



Desiccator



Volumetric Flask



TDS Meter



Water Bath



Conductivity Meter



Pipette Stand



Dropping Bottle



Porcelain Wares



Aspirator Bottle



Tripod Stand

Sr. No.	Items
VCH 1	<b>CHEMICALS (In All Grades)</b>
VCH 001	<b>ABELS FLASH POINT APPARATUS</b> Determination of close cup flash point of petroleum & mixtures as per IP 33, IP 170 & IS 1448 (Part I) 1985 (P:20). It is suitable for oils which flash below 70°C. Supplied with oil cup, cover fitted with stirrer, thermometer socket S.S Water Bath, Stand. Electric heater is fitted at bottom 220Volts AC Circuits
VCH 002	<b>ANALYTICAL BALANCE (Chemical Balance) Double Pan</b> 1- Superior Quality 2- Ordinary Quality
VCH 003	<b>ANALYTICAL WEIGHT BOX (Brass CP)</b> 1- 1mg to 100gms 2- 1mg to 200gms 3- 100gms, IDDC Certified & Tested
VCH 003/B	<b>ANALYTICAL WEIGHTS SPARE (Brass CP)</b> 1- 1gm 2- 2gm 3- 5gm 4- 10gm 5- 20gm 6- 50gm 7- 100gm 8- 200gm
VCH 004	<b>ASBESTOS SHEET</b> 1- 6"x6" with metal frame (Per Dz.) 2- 6"x6" without metal frame (Per Dz.)
VCH 005	<b>ATOMIC MODEL (Ordinary Plastic)</b> 1- 60 Balls 2- 120 Balls
VCHN05	<b>BEAKER TONG, 12" (Stainless Steel)</b>
VCH 006	<b>BEEHIVE SHELVES (Porcelain)</b> 1- 3" Dia. 2- 4" Dia.
VCH 007	<b>BLOW PIPE (Brass)</b> 1- 8" 2- 12"
VCHN 08	<b>BOILING POINT METHOD (Land Berger's) By Walker &amp; Lunsden</b>
VCHN10	<b>BOMB CALORIMETER APPARATUS (As Per IP-12 Specifications)</b> Determines heat of combustion, calorific value & sulphur contents of solid & liquid fuels. The bomb body & lid are machined from S.S rod cap approx. 300ml. Provided with high pressure valve & electrodes. Calorimeter vessel, water jacket, stirrer FHP motor driven & supplied with firing unit, with <b>Electronic Digital Thermometer 0.01°C Read Out</b> , Pellet Press, ignition wire & pressure gauge on stand with copper pipe fitting.
VCH 008	<b>BUCHNER FUNNEL (Porcelain)</b> 1- Dia. 2" 2- Dia. 2.5" 3- Dia. 3" 4- Dia. 4" 5- Dia. 5" 6- Dia. 6" 7- Dia. 8"
VCH 009	<b>BUNSEN BURNER (Brass Pipe 150mm &amp; dia. 12mm) Superior</b> 1- Without Stop cock 2- With Stop cock

Sr. No.	Items
VCH 010	<b>BURETTE BRUSH (Nylon)</b>
VCH 011	<b>BURETTE CLAMP (Metallic)</b> 1- Single 2- Double
VCH 012	<b>BURETTE STAND WITH CLAMP (Wooden)</b>
VCH 013	<b>BURETTE STAND WITH CLAMP (Metallic) 7"x5"x24"</b> , Superior Quality
VCH 014	<b>CAPILLARY TUBE FOR MELTING POINT (Pkt.)</b> 1- Routine Quality in C.B Box(both end close) 2- Superior Quality in Plastic Box (both end close) 3- Superior Quality in Plastic Box (one end close)
VCHN15	<b>CARBON RESIDUE APPARATUS (CONRADSON)</b> As Per IP 13, ASTM D-189 Specs, Determine amount of Carbon Residue when oil is evaporated under specified conditions. Consists of spun sheet 25ml iron crucible, sheet iron hood & sheet iron block on a stand, gas burner 1- Single Test Apparatus 2- Four Test Apparatus
VCH 016	<b>CHARCOL BLOCK (4"x1" Per Dozen)</b>
VCH 017	<b>CHINA DISH (Porcelain)</b> 1- Dia. 2" 2- Dia. 2.5" 3- Dia. 3" 4- Dia. 4" 5- Dia. 6"
VCH 018	<b>CHROMATOGRAPHY PAPER SHEET</b>
VCH 018/B	<b>CHROMATOGRAPHY JAR APPARATUS, (Size 10"x3")</b>
VCH 019	<b>CLAMP &amp; BOSSHEAD</b> 1- Oxidized (Black Colour) 2- Dipress, Superior Quality (Universal Clamp) Holds upto 50mm Dia. 3- Dicast, Superior Quality (Universal Clamp) Holds upto 50mm Dia. 4- Condenser Clamp, 3 Finger (rubber covered Jaws) Holds upto 90mm Dia. 5- Four Finger Clamp (cork lined) Holds upto 90mm Dia. 6- Jumbo 3 finger clamp (rubber covered jaws) holds 60mm to 150mm Dia. 7- BOSSHEAD only (Dipress) 8- BOSSHEAD only (Dicast)
VCH 020	<b>CLAY PIPE TRIANGLE (65mm)</b>
VCHN25	<b>CLEVELAND FLASH POINT &amp; FIRE POINT APPARATUS</b> Determines flash point & fire point of petroleum products. Open cup flash below 80°C as per IP 36 & IS: 1448 (P:69)1969. Consists of a cup, heading plate to specific dimension thermometer clip & test flame attachment with swivel joint. Heating is controlled by energy regulator. Works on 220Volts. 50cycles AC circuits
VCHN28	<b>FLASH TONG 12" S.S</b>

CENTRIFUGAL MACHINES	
Sr. No.	Items
VCH 015	<b>CENTRIFUGAL MACHINE</b> 1- Hand Driven 4 Tubes, Superior Quality 2- Electrical, Superior Quality (4 Tube) 3- Electrical, Remi Pattern (Doctor Model), 8 Tube
VCH 015/A	<b>CENTRIFUGE MACHINE (DIGITAL)</b> Benchtop with digital speedometer, speed regulator thru variac rheostat, Digital Timer 0-59 min. Max 5200rpm (without load). Upto 12x15ml Angle Head.
VCH 015/B	<b>MICRO CENTRIFUGE MACHINE (DIGITAL)</b> Variable speed controller, Digital speed indicator, Digital Timer 0-59minutes, Max 13000rpm (with load). Supplied with 12x1.5/2ml Rotor Head
VCH 015/C	<b>REFRIGERATED MICRO CENTRIFUGE (DIGITAL)</b> Temp. from Room Temp. upto minus 8DegC, Controlled by PID Digital Temp. Controller cum indicator, Digital speed controller, digital speed indicator, digital timer 0-59min. Max 13000rpm. Supplied with 12x1.5/ 2ml Rotor Head & adpoter for 0.2/0.5ml MCT
VCH 015/D	<b>REFRIGERATED CENTRIFUGE MACHINE (DIGITAL)</b> Temp. From Room Temp. upto -8°C, Controlled by PID Digital Temp. controller cum indicator, digital speed indicator, digital speed controller, digital timer 0-59min. Max 7000rpm. 8x15ml Rotor Head
VCH 015/E	<b>HIGH SPEED CENTRIFUGE MACHINE (DIGITAL)</b> Digital speedometer, Digital R.C.F indicator, Digital Timer 0-99 minutes, Imbalance detector Max 20000rpm (without load). Prices are without rotor which can be selected from below.
VCHN30	<b>CLOUD AND POUR POINT APPARATUS</b> As per IP 15 & IS 1448 (P:10) 1970. Consists of cooling bath made of S.S Sheet & stand unit with drain plug & cover has provision for fitting thermometer & a filling aperture for adding freezing mixture. Glass jar, Disc & gasket are provided. 1- Single Test 2- Two Test
VCH 021	<b>CONDUCTIVITY METER (DIGITAL)</b> 1- Max Make, Table Pattern 2- Pen Type, Imported
VCH 022	<b>CRUCIBLE WITH LID (Porcelain)</b> 1- 15ml 2- 25ml or 30ml (Any One)
VCH 023	<b>CRUCIBLE TONG (Iron) Routine Quality</b> 1- 6" 2- 8" 3- 10" 4- 12" 5- 18" 6- 24"
VCH 024	<b>CRUCIBLE TONG (Stainless Steel)</b> 1- 6" 2- 8" 3- 10" 4- 12" 5- 18" 6- 24"
VCHN 35	<b>DESICATOR PLATE (Porcelain) 4" to 6" (any one size)</b>

Sr. No.	Items
VCHN 38	ELECTRIC BUNSEN BURNER
VCHN 40	ENGLER VISCOMETE (As per IP 212 & ASTM D-490)
VCH 025	FILTER PAPER PKT. (Ordinary) 1- Dia. 11cm, Hand Made 2- Dia. 12.5cm, Hand Made
VCH 026	FILTER PAPER PKT. (Doctor Watt Make) 1- Dia. 9cm, Hand Made 2- Dia. 11cm, Hand Made 3- Dia. 12.5cm, Hand Made 4- Dia. 15cm, Hand Made 5- Dia. 18cm, Hand Made
VCH 027	FILTER PAPER PKT. (Machine Made Fine Quality) 1- Dia. 9cm, No. 1 2- Dia. 11cm, No 1 3- Dia. 12.5cm, No 1
VCH 028	FILTER PAPER REAM, 18"x22" 1- Hand Made, Ordinary Quality (400 Sheets) 2- Machine Made, Superior Quality (500 Sheets) 3- Machine Made, Superior Quality (100 Sheets)
VCHN45	FLOW CUP VISCOMETERS Measures Viscosity of paints, varnishes, lacquers & other viscous products. Complete with stand As per I.S specifications. Jet No. B-1, B-2, B-3, B-4, B-5 & B-6 (Any One)
VCH 029	FRACTIONAL WEIGHT BOX (Brass) 1- 1 to 500mg, ANCHOR Make 2- 1 to 500mg, Ordinary Quality
VCH 030	FUNNEL STAND (Wooden)
VCH 031	GAS JAR COVER (Size 3" Dia.)
VCH 032	GAS TAPS 1- Two Way, Brass 2- Four way, Brass 3- One Way, Brass
VCH 033	GLASS STIRRER, (8"/ 10"/ 12") Any one size
VCH 034	HYDROMETER UNIVERSAL (Heavy/Light Liquids)
VCH 035	IGNITION TUBE (Pk. of 5 Grs, Superior Quality)
VCH 036	LABEL BOOK STICKER TYPE
VCH 037	LITMUS PAPER RED/ BLUE (Pk. of 100Lvs) 1- INDICA Make, In Card Board Box 2- Dr. Watt Make, In Card Board Box 3- In Plastic Box
VCH 038	MAGNESIUM RIBBON (25 Gm.)
VCHN50	MECKER BURNER, For wide flame (Brass Pipe 150x25mm dia.) 1- Without Stop Cock 2- With Stop Cock
VCHMD	MODELS FOR DISPLAY (In Acrylic Showcase) 1- Hydrogen Molecule Model 2- Oxygen Molecule Model 3- Helium Molecule Model 4- Formation of Sodium Ion 5- Diamond Crystal Model (Assembled in showcase) 6- Graphite Crystal Model (Assembled in showcase) 7- Sodium Chloride Crystal Model (Assembled in showcase) 8- Isotopes of Hydrogen Model 9- Orbit of Atom Model 10- Hydro Carbon Model (set of 5) 11- Hydro Carbon Model (set of 10) 12- Structure of Atom Model

Sr. No.	Items
VCH 039	MOHL'S APPARATUS (Photosynthesis Apparatus) 1- Big Pattern 2- Small Pattern
VCH 040	PENSKY MARTIN FLASH POINT APPARATUS (close up)
VCH 041	PERIODIC TABLE CHART 1- Laminated, 100x135cm (long form) 2- Jumbo Raxine, 120x160cm 3- Polyart, 100x70cm 4- Mendleev's periodic table, 75x100cm Raxine
VCH 042	PESTLE & MORTAR (Porcelain) 1- Dia. 3" 2- Dia. 4" 3- Dia. 5" 4- Dia. 6"
VCH 043	PH METER (Digital), Table Pattern 1- Max Make 2- E.I Make 3- Ph Meter (Pen type) Imported
VCHN 58	PARAFILM (Imported) 1- 4"x125 Feet 2- 2"x250 Feet
VCH 045	PH PAPER (INDICA), In Card Board Box 1- pH 0-10, Pk of 100 Lvs 2- pH 0-14, Pk of 100 Lvs 3- Roll of 5 meter
VCH 046	PH PAPER, In Plastic Box Pack of 100 Lvs
VCH 047	PINCH CLIP, Iron 1- Hoffman (Screw Type) 2- Mohr Type (Press Type)
VCH 048	PIPETTE BULB RUBBER 1- Small 2- Medium 3- Large
VCH 049	PLATINUM/ INOCULATING LOOP HOLDER
VCH 050	PLATINUM WIRE, FUSED WITH TEST TUBE 1- Pure (EKI Make) 2- Ordinary

### REDWOOD VISCOMETER

Designed for viscosity tests of Petroleum Products. As per IP 70 (Former). Two adaption of Red Wood viscometer are available. No 1 for liquids having Red Wood flow 20 second to 2000 second & No. II for liquids whose flow time exceeds 2000 sec. The complete out fit comprises S.S bath with electrical heating arrangement suitable to operate at 200 Volts AC mains with tap, silver plated oil cup with precision S.S jet, cup cover, ball valve thermometer-clip. Stirrer & M.S Sheet stand with leveling screws. These are Electrically Heated with energy regulator control.

Sr. No.	Items
VCH 051	REDWOOD VISCOMETER No. 1
VCH 052	REDWOOD VISCOMETER No. 1
VCH 053	RUBBER CORK ASSORTED (per dozen) Ordinary Quality RED Colour
VCHN 59	RETORT RING fitted with boss head (powder Coated) Heavy (Funnel Holder) 1- Size 2" Dia. Or 2.5 Dia. (any one) 2- Size 3" Dia. 3- Size 4" Dia. 4- Black Colour (ordinary) 2" or 3" (any one)

Sr. No.	Items
VCH RC	RUBBER CORK (EXTR55A SOFT) SUPERIOR QUALITY
	Size No.      Top Dia. (mm)      Bottom Dia. (mm)
1-	0      13.0      9.0
2-	1      14.0      11.0
3-	2      16.5      13.0
4-	3      19.0      14.0
5-	4      21.0      15.0
6-	5      22.5      17.5
7-	6      24.5      20.0
8-	7      26.0      20.0
9-	8      26.5      21.0
10-	9      28.0      21.5
11-	10      30.0      26.0
12-	11      33.0      29.0
13-	12      34.5      30.0
14-	13      38.5      31.0
15-	14      41.5      32.0
VCH RC/A	Extra Charges for ONE HOLE per Cork
VCH RC/B	Extra Charges for TWO HOLE per Cork
VCH RB/A	RUBBER CONE (for filter flask) 1- Suitable for 250ml & 500ml flask 2- Suitable for 1000ml & 2000ml flask
VCH 054	RUBBER TUBING COIL (10 meters) Extra Soft Superior Quality 1- 6mm (For Burettes) 2- 7mm 3- 8mm 4- 10mm
VCH 055	RUBBER TUBING PRESSURE TYPE (Superior Quality) 1- Bore Dia. 8mm, Thickness 3mm (For Burners) 2- Bore Dia. 6mm, Thickness 3mm
VCH 500	SAFETY GOGGLES 1- Ordinary Quality 2- Ordinary Quality with Elastic String 3- Imported (polycarbonate) Superior 4- Imported with Ventilation (polycarbonate) Superior
VCH 056/A	SILICA CRUCIBLE (Without Lid) 1- 15 ml 2- 25 ml 3- 50ml 4- 80ml 5- 100ml
VCH 056/B	SILICA CRUCIBLE (With Lid) 1- 15 ml 2- 25 ml 3- 50ml 4- 80ml 5- 100ml
VCH 057	SINGLE PAN ANALYTICAL BALANCE, ELECTRICAL Cap. 200gms, L.C 0.1mg
VCH 058	SPATULA S.S (Spoon Type) 1- 6" Routine Quality 2- 8" Routine Quality 3- 6" Heavy Quality 4- 8" Heavy Quality 5- 10" Heavy Quality 6- 12" Heavy Quality 7- 8" Semi Micro 8- 4" Semi Micro 9- 4", heavy Quality
VCH 059	SPIRIT LAMP (100ml) 1- S.S 2- Aluminum 3- Brass
VCH 060	STANNING RACK, WOODEN (6 Hole)

Sr. No.	Items
VCH 061	<b>STARCH IODIDE PAPER (INDICA, 100Lvs)</b>
VCH 062/A	<b>TEST TUBE (Borosilicate) HARD GLASS</b> 1- 10x75mm (Pk. of 100) 2- 12x100mm (Pk. of 100) 3- 15x125mm (Pk. of 100) 4- 18x150mm (Pk. of 100) 5- 25x150mm (Pk. of 50)
VCH 062/B	<b>TEST TUBE (Borosilicate) NEUTRAL</b> 1- 10x75mm (Pk. of 100) 2- 12x100mm (Pk. of 100) 3- 15x125mm (Pk. of 100) 4- 18x150mm (Pk. of 100) 5- 25x150mm (Pk. of 50)
VCH 063	<b>TEST TUBE BRUSH (Nylon) Superior Quality</b>
VCH 064	<b>TEST TUBE HODER (Wooden Handle)</b> 1- Iron Chrome Plated, Superior Quality 2- Brass, Superior Quality 3- Iron Zinc Plated, Ordinary Quality (Yellow Wooden Handle)
VCH 065	<b>TEST TUBE STAND (Wooden)</b> 1- 6 Hole 2- 12 Hole
VCH 066/A	<b>TEST TUBE STAND (Aluminum)</b> 1- 12mm, 12 Hole 2- 12mm, 24 Hole 3- 15mm, 12 Hole 4- 15mm, 24 Hole 5- 18mm, 12 Hole 6- 18mm, 24 Hole 7- 25mm, 12 Hole 8- 25mm, 24 Hole
VCH 066/B	<b>TEST TUBE STAND (Aluminum)</b> 1- 12mm, 12 Hole 2- 12mm, 24 Hole 3- 15mm, 12 Hole 4- 15mm, 24 Hole 5- 18mm, 12 Hole 6- 18mm, 24 Hole 7- 25mm, 12 Hole 8- 25mm, 24 Hole
VCH 067	<b>THISTLE FUNNEL (Neutral Glass)</b>
VCH 068	<b>TRIPOD STAND</b> 1- Routine Quality, 6" 2- Routine Quality, 8" 3- Heavy Quality, 6" 4- Heavy Quality, 8" 5- Complete Stainless Steel, 6" 6- Complete Stainless Steel, 8"
VCH 069	<b>WALL THERMOMETER</b> 1- Routine Quality (Plastic Base) 2- Big Size (Plastic Base) 3- Jumbo Size (Half meter) wooden
VCH 070	<b>WATER BATH (Copper)</b> 1- Dia. 4" 2- Dia. 5" 3- Dia. 6" 4- Dia. 8"
VCH 550	<b>WATER TAP (SWAN NECK Type) Brass C.P</b> 1- One Way 2- Two Way 3- Three Way
VCH 071	<b>WIRE GAUGE</b> 1- With Asbestos Centre (Routine Quality) w/o Frame 2- With Asbestos Centre & Frame 3- With Ceramic Centre 6" (Superior) without frame

SODA GLASSWARE (S.G)	
Sr. No.	Items
VCH 072	<b>ASPIRATION BOTTLE, 'S.G'</b> 1- 1 Ltr 2- 2 Ltr 3- 3 Ltr 4- 5 Ltr 5- 10 Ltr 6- STOPCOCK fitted with Rubber Cork for Aspirator Bottle
VCH 073	<b>BATTERY JARS ROUND (Simple Cell Jar), 15x10cm'S.G'</b>
VCH 074	<b>BEAKER, 'S.G'</b> 1- 100ml 2- 250ml 3- 500ml 4- 1000ml
VCH 075	<b>BELL JAR WITH STOPPER, 'S.G'</b> 1- 20x10cm 2- 22.5x15cm
VCH 076	<b>BELL JAR (KNOBBED), 'S.G'</b> 1- 20x10cm 2- 22.5x15cm
VCH 077	<b>BURETTE with pinch clip N.G (50ml)</b>
VCH 079	<b>CANADA BALSOM BOTTLE, 'S.G'</b> 1- 30ml 2- 60ml
VCH 080	<b>CALCIUM CHLORIDE TOWER, 250ml 'S.G'</b>
VCH 082	<b>CAVITY BLOCK , 'S.G'</b> 1- 40x40mm 2- 55x55mm
VCH 084	<b>COUPLIN JAR, For 5 slides, 'S.G'</b>
VCH 085	<b>DESICATOR with cover, 'S.G'</b> 1- 100mm 2- 125mm 3- 150mm 4- 200mm 5- 250mm
VCH 086	<b>DROPPING BOTTLE T.K PATTERN, 'S.G'</b> 1- 30ml 2- 60ml 3- 125ml
VCH 088	<b>FLASK CONICAL/ ROUND/ FLAT BOTTOM, 'S.G' (Any One)</b> 1- 100ml 2- 250ml 3- 500ml 4- 1000ml
VCH 089	<b>FLASK MEASURING (VOLUMETRIC), 'S.G'</b> 1- 50ml 2- 100ml 3- 250ml 4- 500ml 5- 1000ml 6- 2000ml
VCH 90	<b>FUNNEL, 'S.G'</b> 1- 50mm 2- 65mm 3- 75mm 4- 100mm 5- 150mm
VCH 091	<b>GAS JAR (Specimen Jar), 'S.G'</b> 1- 15x5cm 2- 20x5cm 3- 25x5cm 4- 30x5cm 5- 25x7.5cm 6- 30x7.5cm
VCH 092	<b>GLASS TUBING 4 to 7mm (Per 2.5Kg)'S.G'</b>

Sr. No.	Items
VCH 093	<b>GLASS RODING 4 to 7mm (Per 2.5Kg) 'S.G'</b>
VCH 094	<b>HYDROMETER JARS, 'S,G'</b> 1- 250ml 2- 500ml
VCH 095	<b>KIPPS APPARATUS, 'S.G'</b> 1- 500ml 2- 1000ml
VCH 096	<b>LECHLANCHEE CELL POT, 'S,G'</b>
VCH 097	<b>MEASURING CYLINDER, 'S.G'</b> 1- 25ml 2- 50ml 3- 100ml 4- 250ml 5- 500ml 6- 1000ml 7- 2000ml
VCH 098	<b>PESTLE &amp; MORTAR, 'S.G'</b> 1- 9cm 2- 11.5cm 3- 15cm
VCH 099	<b>PETRI DISH, 'S.G'</b> 1- 50mm 2- 75mm 3- 100mm 4- 150mm
VCH 100	<b>PIPETTE VOLUMETRIC, 'N.G' 10ml or 20ml or 25ml (Any One)</b>
VCH 100/C	<b>PIPETTE WASHER (Automatic) Stainless Steel</b>
VCH 101	<b>PNEUMATIC TROUGH, 'N.G'</b> 1- 15x10cm 2- 20x10cm 3- 25x10cm 4- 30x12.5cm
VCH 102	<b>REAGENT BOTTLE (Narrow Mouth), 'S.G'</b> 1- 30ml/ 60ml (Any one) 2- 125ml 3- 250ml 4- 500ml 5- 1000ml
VCH 103	<b>REAGENT BOTTLE (Narrow Mouth), AMBER Colour</b> 1- 30ml/ 60ml (any one size) 2- 125ml 3- 250ml 4- 500ml 5- 1000ml
VCH 104	<b>REAGENT BOTTLE (Wide Mouth), 'S.G'</b> 1- 60ml 2- 125ml 3- 250ml 4- 500ml 5- 1000ml
VCHN60	<b>SPECIFIC GRAVITY BOTTLE, 'N.G'</b> 1- 25ml 2- 50ml
VCH 106	<b>SPECIMEN JAR WITH BAKELITE COVER, 'S.G'</b> 1- 180ml 2- 250ml 3- 500ml 4- 1000ml 5- 1500ml
VCH 107	<b>SPECIMEN JAR (Rectangular Jar), Without Cover 'S.G'</b> 1- 15x10x5cm 2- 20x10x5cm 3- 20x20x12cm 4- 26x15x10cm 5- 30x17x9cm 6- 25x25x12cm 7- COVERS FOR RECTANGULAR JARS

Sr. No.	Items
VCH 108	<b>SPIRIT LAMP, 'S.G'</b> 1- 60ml 2- 125ml 3- 125ml, Hexagonal Shape
VCH 109	<b>STANNING JAR (For 10 Slides), 'S.G'</b>
VCH 110	<b>WINCHESTER BOTTLE, 'S.G'</b> 1- 2000ml 2- 3000ml 3- 5000ml 4- 10000ml
VCH 111	<b>WOLF BOTTLE, 'S.G'</b> 1- 250ml 2- 500ml

### BOROSILICATE GLASSWARE

Sr. No.	Items
VCH 300	<b>AIR CONDENSER (300mm)'B.G'</b> 1- Plain without Joint 2- With joint (B-19 or B-24)
VCH 112	<b>BEAKER GRADUATED, 'B.G'</b> 1- 100ml 2- 150ml 3- 250ml 4- 500ml 5- 1000ml 6- 50ml 7- 25ml 8- 2000ml
VCH 113	<b>BURETTE with Rota Flow Stopcock, 'B.G'</b> 1- 25ml 2- 50ml 3- 100ml 4- 10ml with cup top (Micro Burette) 5- 5ml with cup top (Micro Burette) 6- 2ml with cup top (Micro Burette) 7- 1ml with cup top (Micro Burette) 8- BURETTE WITH PINCH CLIP, 50ml 'B.G' 9- BURETTE WITH GLASS STOPCOCK, 50ml 'B.G'
VCH 114	<b>CENTRIFUGAL TUBE, Plain 10ml or 15ml (any one) Conical Bottom 'B.G'</b> 1- Plain 2- Centrifugal Tube, Graduated 'B.G'
VCH CC	<b>CHROMATOGRAPHY COLUMN, Plain with stopcock 'B.G'</b> 1- Length 20cm, Dia. 10cm 2- Length 30cm, Dia. 15cm
VCH 305	<b>COIL CONDENSER (GRAHM) COILED DISTILLATE TYPE 'B.G'</b> 1- Length 200mm, B-24-24 2- Length 300mm, B-19-19
VCH 116	<b>DISTILLATION FLASK, 'B.G'</b> 1- 250ml 2- 500ml 3- 1000ml
VCH 117	<b>DISTILLATION SET (Condenser, Receiver, Adaptor), 'B.G'</b> 1- 250ml 2- 500ml 3- 1000ml 4- 2000ml
VCH 118	<b>FILTER FLASK, 'B.G'</b> 1- 250ml 2- 500ml 3- 1000ml
VCH 119	<b>FLASK CONICAL / ROUND / FLAT BOTTOM, 'B.G'</b> (Any One type of flask) 1- 50ml 2- 100ml 3- 250ml 4- 500ml 5- 1000ml

Sr. No.	Items
VCH 120	<b>FLASK CONICAL/ROUND BOTTOM / FLAT BOTTOM with Joint B-24/29</b> 1- 100ml 2- 250ml 3- 500ml 4- 1000ml <b>NOTE:</b> Specify the type required at the time of order
VCH 121	<b>FUNNEL, 'B.G'</b> 1- 50mm 2- 65mm 3- 75mm 4- 100mm
VCH 122	<b>IODINE FLASK, 'B.G'</b> 1- 250ml 2- 500ml
VCH 123	<b>KIPPS APPARATUS, 'B.G'</b> 1- 500ml 2- 1000ml
VCH 124	<b>LIEBIG CONDENSER, 'B.G' (Plain)</b> 1- 200mm 2- 300mm
VCH 125	<b>LIEBIG CONDENSER, 'B.G' (Joint)</b> 1- 200mm 2- 300mm
VCH 126	<b>MEASURING CYLINDER, 'B.G'</b> 1- 5ml 2- 10ml 3- 25ml 4- 50ml 5- 100ml 6- 250ml 7- 500ml 8- 1000ml 9- 2000ml
VCH 127	<b>NESSLERS CYLINDER, 'B.G'</b> 1- 50ml 2- 100ml
VCH 500	<b>ORSAT GAS ANALYSIS UNIT 'B.G'</b> 1- With 3 Absorption Pipette 2- With 4 Absorption Pipette
VCH 128	<b>STALGANOMETER, 'B.G'</b>
VCH 129	<b>PETRI DISH IMPORTED (Anumbra) Crystal Clear Glass</b> 1- 3" 2- 4"
VCH 130	<b>PIPETTE GRADUATED, 'B.G'</b> 1- 0.1, 1, 2, 5 & 10ml (Any One capacity) 2- 20ml or 25ml (any one capacity)
VCH 131	<b>PIPETTE VOLUMETRIC, 'B.G'</b> 1- 5ml or 10ml (Any One) 2- 20ml or 25ml (Any One)
VCH 350	<b>PYKNOMETER 'B.G'</b> 1- 5ml or 10ml (any one capacity) 2- 25ml
VCH 132/A	<b>REAGENT BOTTLE (Narrow Mouth), 'B.G'</b> 1- 125ml 2- 250ml 3- 500ml 4- 1000ml
VCH 132/B	<b>REAGENT BOTTLE with blue screw cap (Autoclaveable) 'B.G'</b> 1- 125ml 2- 250ml 3- 500ml 4- 1000ml 5- 2000ml
VCH 133	<b>RETORT, 'B.G'</b> 1- 250ml 2- 500ml

Sr. No.	Items
VCH 134	<b>SPECIFIC GRAVITY BOTTLE, 'B.G'</b> 1- 25ml 2- 50ml
VCH 135	<b>SINTERED GLASS CRUCIBLE (G1/G2/G3/G4) 'B.G' GOOCH CRUCIBLE</b> 1- 15ml or 30ml (any one)
VCH 136	<b>SEPARATING FUNNEL, 'B.G'</b> 1- 125ml 2- 250ml 3- 500ml 4- 1000ml
VCH 137	<b>THIEL TUBE, 'B.G'</b> 1- 18x150mm 2- 25x150mm
VCH 138	<b>VISCOMETER OSTWALD, 'B.G'</b>
VCH 340	<b>VICTOR MEYER'S APPARATUS</b>
VCH 139	<b>VOLUMETRIC FLASK (Measuring Flask), 'B.G'</b> 1- 25ml 2- 50ml 3- 100ml 4- 250ml 5- 500ml 6- 1000ml 7- 2000ml
VCH 140	<b>WEIGHING BOTTLE, 'B.G'</b> 1- 25x50mm, 15ml 2- 30x60mm, 25ml

### (POLYLAB) PLASTIC LABWARE

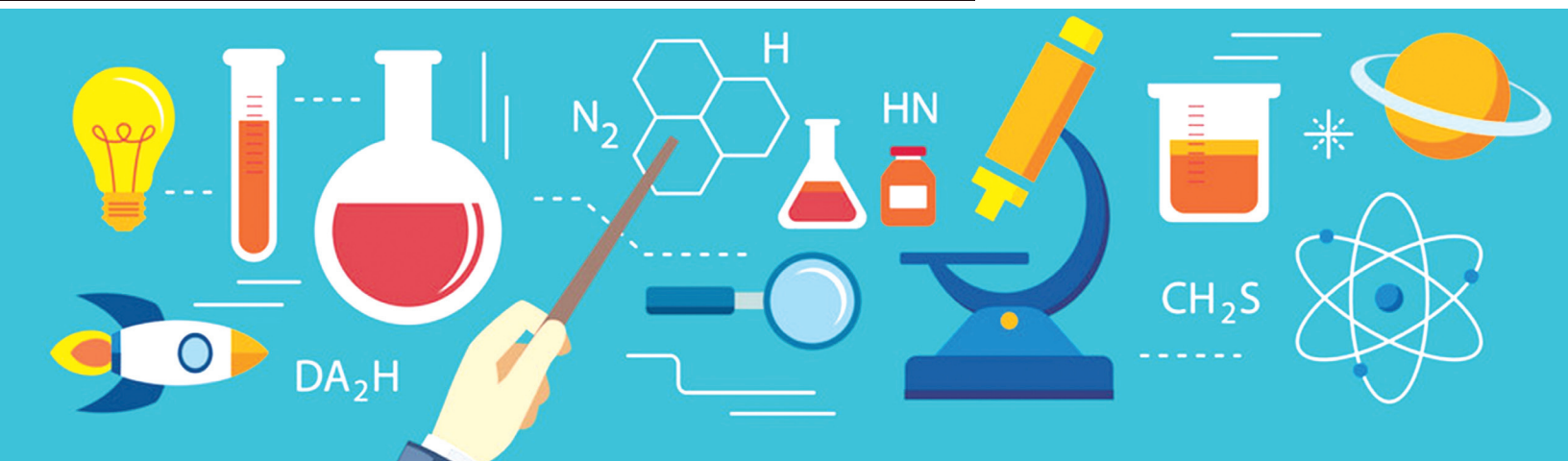
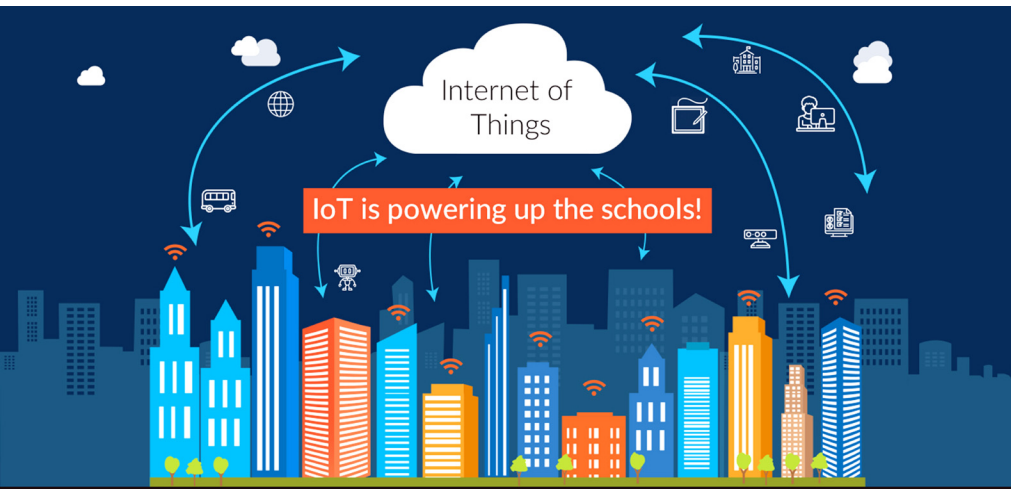
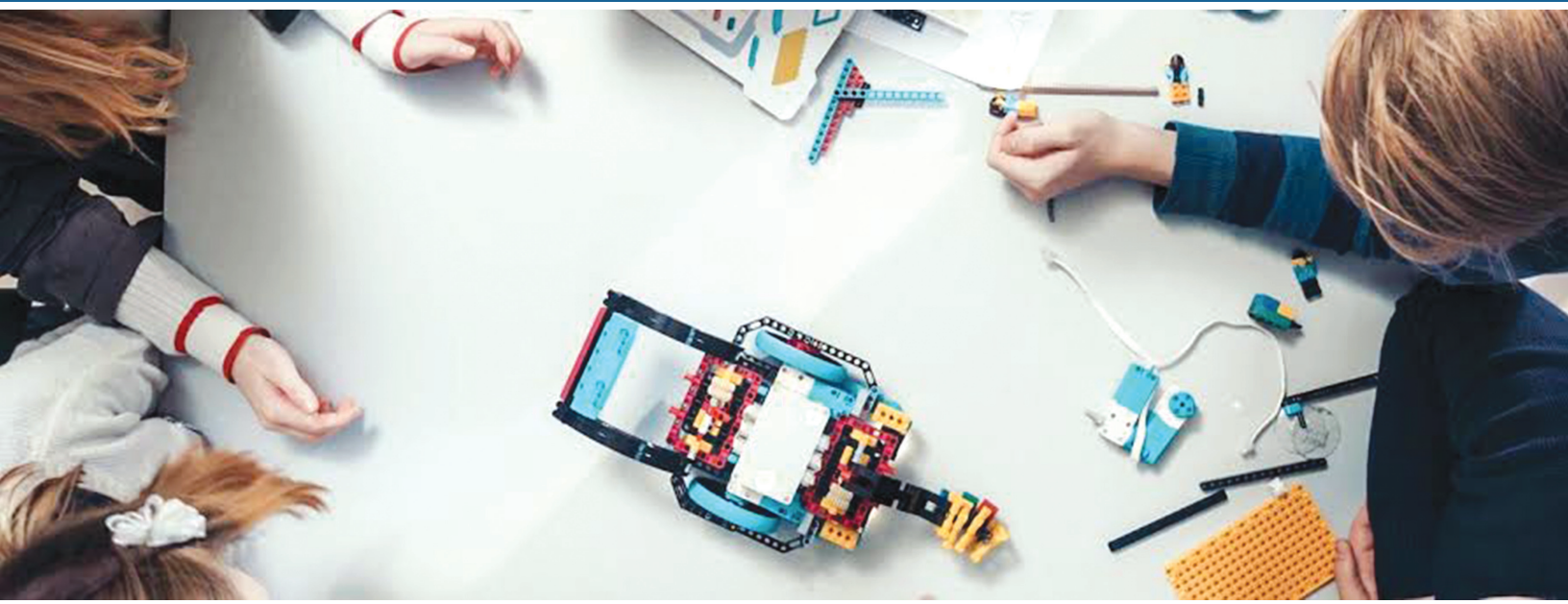
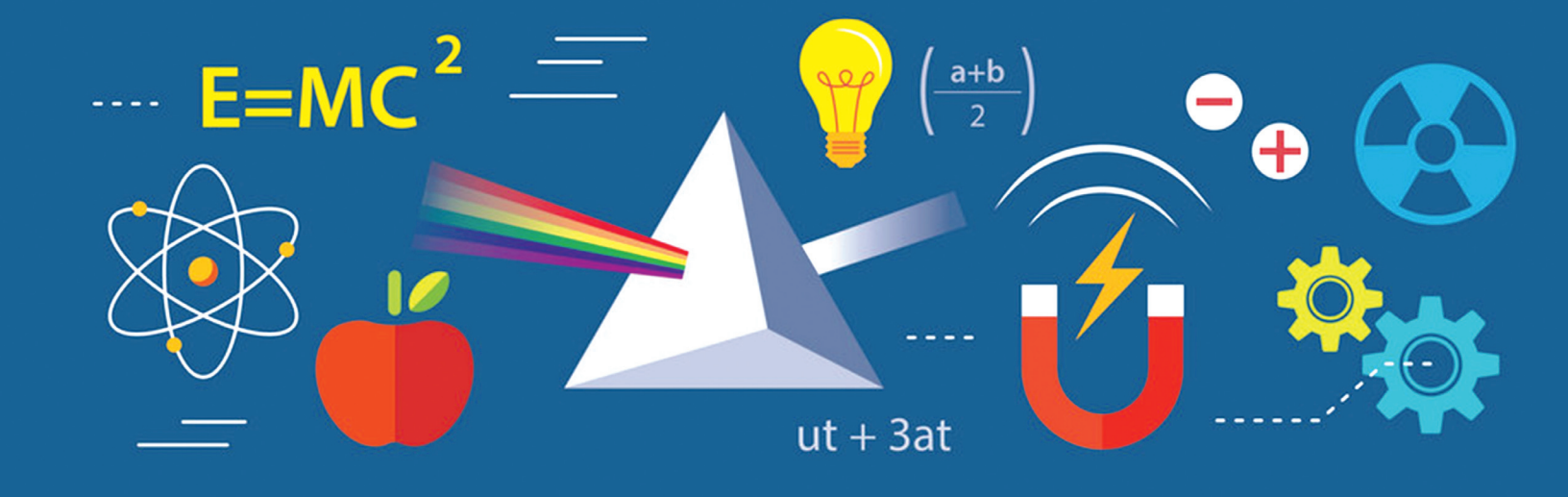
Sr. No.	Items
VCH 141	<b>ANIMAL CAGE 'POLYLAB'</b> 1- 290x220x140mm 2- 430x270x150mm
VCH 142	<b>ATOMIC MODEL SET 'POLYLAB'</b> 1- (Senior) 370 Balls & 185 Connecting Lugs 2- (Junior) 75 Balls & 37 Connecting Lugs 3- Euro Design (Teacher Model) 4- Euro Design (Student Model)
VCH 143	<b>ASPIRATOR BOTTLE 'POLYLAB'</b> 1- 5 Ltr. 2- 10 Ltr. 3- 20 Ltr.
VCH 144	<b>BEAKER Graduated 'POLYLAB'</b> 1- 100ml 2- 250ml 3- 500ml 4- 1000ml 5- 2000ml 6- 5000ml
VCH 145	<b>BUCHNER FUNNEL 'POLYLAB'</b> 1- 70mm 2- 110mm
VCH 146	<b>BURETTE 'POLYLAB'</b> 1- 25ml 2- 50ml 3- 100ml
VCH 147	<b>CARBOY 'POLYLAB'</b> 1- 10 Ltr 2- 20 Ltr
VCH 148	<b>CARBOY WITH STOP COCK 'POLYLAB'</b> 1- 10 Ltr 2- 20 Ltr
VCH 149	<b>CENTRIFUGAL TUBE CONICAL GRADUATED 'POLYLAB/ABDOS'</b> 1- 15ml 2- 50ml

Sr. No.	Items
VCH 150	<b>CONNECTORS (T &amp; Y) 'POLYLAB'</b> 1- 6mm, (Pk. of 36) 2- 8mm, (Pk. of 36) 3- 10mm, (Pk. of 36)
VCH 151	<b>CONNECTORS (L Shaped) 'POLYLAB'</b> 1- 6mm, (Pk. of 36) 2- 8mm, (Pk. of 36) 3- 10mm, (Pk. of 36)
VCH 152	<b>CONICAL FLASK (Screw Cap) 'POLYLAB'</b> 1- 100ml 2- 250ml 3- 500ml
VCHN 62	<b>MICRO CENTRIFUGE TUBE (MCT), 1.5ml (Pack of 500) ABDOS</b>
VCH 153	<b>CONICAL MEASURES Graduated 'POLYLAB'</b> 1- 50ml 2- 125ml 3- 200ml
VCH 154	<b>COPLIN JAR 'POLYLAB'</b>
VCH 155	<b>CRYSTAL MODEL 'POLYLAB'</b> 1- Diamond 2- Graphite 3- Sodium Chloride
VCH 156	<b>DESICATOR (Plain) 'POLYLAB'</b> 1- 150mm 2- 200mm 3- 250mm 4- 300mm
VCH 157	<b>DESICATOR (Vaccum) 'POLYLAB'</b> 1- 150mm 2- 200mm 3- 250mm 4- 300mm
VCHN 65	<b>DRAINING BASKET, 400x400x100mm 'POLYLAB'</b>
VCH 158	<b>DROPPING BOTTLE 'POLYLAB'</b> 1- 60ml 2- 125ml
VCH 159	<b>FISHER CLAMP (Burette Clamp) 'POLYLAB'</b> 1- Single 2- Double
VCH 160	<b>FLASK STAND 'POLYLAB'</b>
VCH 161	<b>FUNNEL 'POLYLAB'</b> 1- 50mm 2- 62mm 3- 75mm 4- 100mm 5- 150mm
VCH 162	<b>FUNNEL HOLDER SINGLE 'POLYLAB'</b>
VCH 163	<b>GAS JAR (Specimen Jar), 200mmx50mm 'POLYLAB'</b>
VCH 164	<b>KIPPS APPARATUS 'POLYLAB'</b> 1- 250ml 2- 500ml 3- 1000ml
VCH 165	<b>LABORATORY TRAY 'POLYLAB'</b> 1- 450x350x75mm 2- 375x300x75mm
VCH 166	<b>LECHLANCHEE CELL POT 'POLYLAB'</b>
VCH 167	<b>MEASURING CYLINDERS 'POLYLAB'</b> 1- 10ml 2- 25ml 3- 50ml 4- 100ml 5- 250ml 6- 500ml 7- 1000ml 8- 2000ml

Sr. No.	Items
VCH 168	<b>MEASURING JUG 'POLYLAB'</b> 1- 250ml 2- 500ml 3- 1000ml 4- 2000ml 5- 5000ml
VCHNSD	<b>SLIDE DISPENSER, ABS</b>
VCHN75	<b>MICRO TIP BOX 'POLYLAB'</b> 1- For 96 Micro Tips of 2-200ul 2- For 100 Micro Tips of 200-1000ul
VCH 169	<b>NESTLER CYLINDER STAND (50 or 100ml) 'POLYLAB'</b>
VCH 170	<b>PETRI DISH 'POLYLAB'</b> 1- 50mm (Pk. of 36) 2- 75mm (Pk. of 36) 3- 100mm (Pk. of 36) 4- 125mm (Pk. of 12) 5- 150mm (Pk. of 12)
VCH 171	<b>PETRI DISH (DISPOSABLE), Radiation Sterilized 'POLYLAB'</b> 1- 60mm 2- 90mm
VCH 172	<b>PIPETTE PUMP 'POLYLAB'</b> 1- 2ml or 10ml 2- 25ml
VCH 173	<b>PIPETTE STAND 'POLYLAB' Horizontal for 12 Pipette</b>
VCH 174	<b>PIPETTE STAND 'POLYLAB' Vertical for 28 Pipette</b>
VCHN 85	<b>POWDER FUNNEL 'POLYLAB'</b> 1- 80mm 2- 100mm 3- 150mm
VCH 175	<b>REAGENT BOTTLE Narrow Mouth 'POLYLAB'</b> 1- 60ml 2- 125ml 3- 250ml 4- 500ml 5- 1000ml
VCH 176	<b>REAGENT BOTTLE Wide mouth 'POLYLAB'</b> 1- 60ml 2- 125ml 3- 250ml 4- 500ml 5- 1000ml
VCH 177	<b>RETORT STAND 'POLYLAB'</b> 1- 225x150mm, Side Hole 2- 300x200mm, Side Hole 3- 300x200mm, Centre Hole
VCH 178	<b>RIA VIAL 12x75mm 'POLYLAB'</b>
VCH 179	<b>SEPARATING FUNNEL 'POLYLAB'</b> 1- 100ml 2- 250ml 3- 500ml
VCH 180	<b>SEPARATING FUNNEL HOLDER 'POLYLAB'</b>
VCH 181	<b>SIMPLE CELL POT 'POLYLAB'</b>
VCH 182	<b>SLIDE BOX 'POLYLAB'</b> 1- 25 Slides 2- 50 Slides 3- 100 Slides
VCH 184	<b>SPATULA 'POLYLAB'</b> 1- 150mm 2- 200mm
VCHN95	<b>MAGENTA BOX 'POLYLAB'</b>
VCH 185	<b>STORAGE VIAL 'POLYLAB'</b> 1- 1ml 2- 2ml 3- 5ml

Sr. No.	Items
VCH 186	<b>STOOL CONTAINER 'POLYLAB'</b> 1- 25ml 2- 30ml or 60ml
VCH 187	<b>TEST TUBE BASKETS 'POLYLAB'</b> 1- 140x120x110mm 2- 160x160x160mm
VCH 188	<b>TEST TUBE STAND 'POLYLAB' 6 Hole, 16mm &amp; 25mm Dia. Tube</b>
VCH 189	<b>TEST TUBE STAND (ROUND) 'POLYLAB' 12 Hole, 19mm &amp; 25mm Dia. Tube</b>
VCH 190	<b>RACK FOR MICRO CENTRIFUGE TUBE 'POLYLAB'</b> 1- 24 Tube 2- 48 Tube
VCH 191	<b>TEST TUBE STAND (3 TIER) 'POLYLAB'</b> 1- 13mmx31 Tubes 2- 16mmx31 Tubes 3- 20mmx20 Tubes 4- 25mmx12 Tubes 5- 25mmx18 Tubes 6- 13mmx18 Tubes 7- 15mmx18 Tubes 8- 18mmx12 Tubes
VCH 192	<b>TROUGH (PNEUMATIC) 'POLYLAB'</b> 1- 200x100mm 2- 250x100mm
VCH 193	<b>URINE CONTAINER (30ml or 60ml) 'POLYLAB'</b>
VCH 194	<b>VOLUMETRIC FLASK with Screw Cap 'POLYLAB'</b> 1- 25ml 2- 50ml 3- 100ml 4- 250ml 5- 500ml 6- 1000ml
VCH 195	<b>WASH BOTTLES 'POLYLAB'</b> 1- 125ml 2- 250ml 3- 500ml 4- 1000ml
VCH 196	<b>WASH BOTTLES (New Type) 'POLYLAB'</b> 1- 125ml 2- 250ml 3- 500ml
VCH 197	<b>WATER BOTTLE FOR ANIMAL CAGE 'POLYLAB'</b> 1- 125ml 2- 250ml
VCH 210	<b>FLOAT RACK, 16 MCT's of 1.5ml 'POLYLAB'</b>
VCH 215	<b>UNIVERSAL MULTI RACK 'POLYLAB'</b>
VCH 220	<b>PIPETTE BOX 'POLYLAB'</b>
VCH 225	<b>L SHAPED SPREADER 'POLYLAB'</b>
VCH 230	<b>ICE BUCKET 'ABDOS'</b>
VCH 235	<b>TEST TUBE WITH SCREW CAP, 16x100mm 'POLYLAB'</b>





**PRODUCT  
CATALOG**  
*Make Your Education Easy*

**CONTACT :**

**Reg. Office:** C-24 Guru Nanak Pura, Laxmi Nagar, Delhi-110092 (INDIA)

**Phone:** +91-8920978276, +91-8447671646, +91-9560234684

**Email:** vagminetek@gmail.com, info@vagminetechnologies.in

**Website:** www.vagminetechnologies.in



**VAGMINE TECHNOLOGIES**

(An ISO 9001:2015 Certified Company)